



Working Principle of Outdoor Base Station





Overview

Outdoor base stations integrate all essential systems into a single Integrated Cabinet, designed to endure harsh conditions like direct sunlight, rain, and extreme temperatures. These units protect the equipment while ensuring efficient functionality.

Outdoor base stations integrate all essential systems into a single Integrated Cabinet, designed to endure harsh conditions like direct sunlight, rain, and extreme temperatures. These units protect the equipment while ensuring efficient functionality.

The ESB-series outdoor base station system utilizes solar energy and diesel engines to achieve uninterrupted off grid power supply. Solar power generation is the use of photovoltaic panels to convert solar energy into electrical energy -48V DC, and then stabilize the load power supply through.

About this Manual Purpose of this Manual This manual introduces the working principle, functions and technical features of ZXG10-OB06 (V1.0) Base Transceiver Station. It enables the user to have an all-around understanding of the technical features of the ZXG10-OB06 (V1.0). ZXG10-OB06 (V1.0).

Control Unit: The controller is in charge of the operation of the whole base station. It controls the transmission power, frequency allocation, handovers between different cells and other network management functions. The control unit also connects with the core network central infrastructure.

What is the principle of base station design and siting?

The principle of base station design and siting is given as follows: Estimate the amount of base stations by means of link budget and coverage requirement. Analyze the capacity of actual network and then determine the required amount of base.

This article will guide you to a deeper understanding of a base station's composition and working principles, with a special focus on the impact of heat on base station performance and how efficient thermal materials solve this core problem. Definition and Basic Functions of a Base Station What is.



Main Base Station Equipment Often referred to as the brain center, this includes:
Baseband Unit (BBU): Handles baseband signal processing. Remote Radio Unit (RRU): Converts signals to radio frequencies for transmission. Active Antenna Unit (AAU): Integrates RRU and antenna for 5G-era efficiency. 2.



Working Principle of Outdoor Base Station



[ZTE ZXG10-OB06 TECHNICAL MANUAL Pdf Download](#)

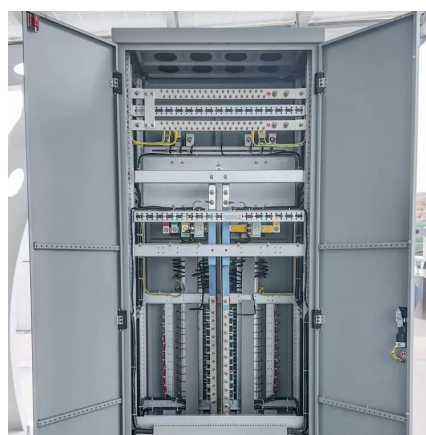
About this Manual Purpose of this Manual This manual introduces the working principle, functions and technical features of ZXG10-OB06 (V1.0) Base Transceiver Station.

[Request Quote](#)

How Outdoor Base Station Antennas Works -- In One Simple ...

Outdoor base station antennas are critical components in wireless communication networks. They serve as the bridge between the network infrastructure and user devices, ...

[Request Quote](#)



Advanced Mobile Outdoor Base Stations for Smart Communication

This outdoor base station supports integration of various clean energy sources such as photovoltaic and wind energy, enabling flexible adjustment of energy supply to ensure ...

[Request Quote](#)



[Working Principle of Outdoor Integrated Base Station](#)

When the output mains power is cut off, the rectifier module stops working, and the solar energy cannot supply power normally. The system output load is powered by the battery to maintain ...



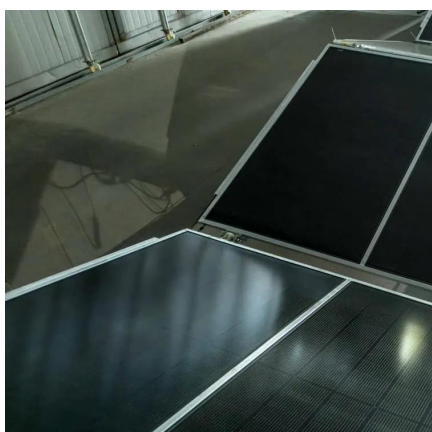
[Request Quote](#)



Nova-246 Outdoor Base Station

Baicells Nova-246 is a type of high performance outdoor macro base station based on LTE technology, which offers multiple models to support different TDD and FDD frequency bands. ...

[Request Quote](#)



What Is a Base Station? Exploring the Core of 5G Networks and ...

This article will guide you to a deeper understanding of a base station's composition and working principles, with a special focus on the impact of heat on base station ...

[Request Quote](#)



[Base station outdoor construction design](#)

The principle of base station design and siting is given as follows: Estimate the amount of base stations by means of link budget and coverage requirement. Analyze the capacity of actual ...

[Request Quote](#)



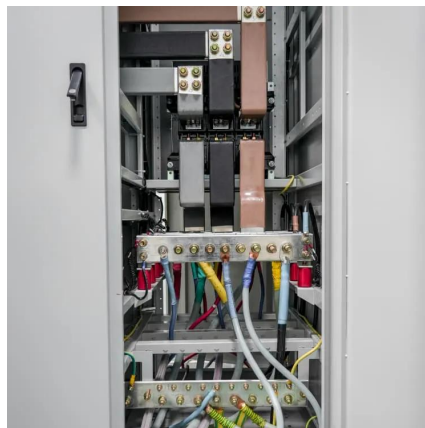
[ZTE ZXG10-OB06 TECHNICAL MANUAL Pdf](#)



[Download , ManualsLib](#)

About this Manual Purpose of this Manual This manual introduces the working principle, functions and technical features of ZXG10-OB06 (V1.0) Base Transceiver Station.

[Request Quote](#)



Base Stations

The base station's RF circuitry is housed in a small outdoor module known as a remote radio head (RRH) or remote radio unit (RRU). ...

[Request Quote](#)



Complete Guide to 5G Base Station Construction , Key Steps, ...

Outdoor base stations integrate all essential systems into a single Integrated Cabinet, designed to endure harsh conditions like direct sunlight, rain, and extreme temperatures.

[Request Quote](#)



Base Stations

The base station's RF circuitry is housed in a small outdoor module known as a remote radio head (RRH) or remote radio unit (RRU). RRH performs all RF functions such as ...

[Request Quote](#)



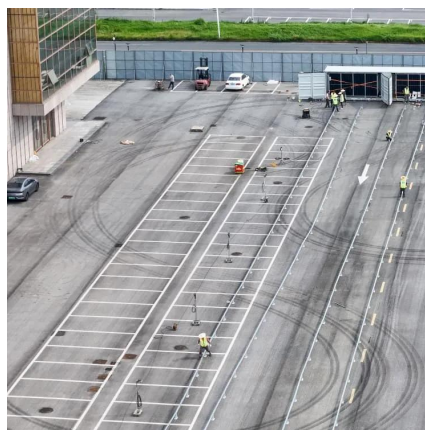
[What Is a Base Station? Exploring the](#)



[Core of 5G ...](#)

This article will guide you to a deeper understanding of a base station's composition and working principles, with a special focus on the ...

[Request Quote](#)



[Advanced Mobile Outdoor Base Stations for Smart ...](#)

This outdoor base station supports integration of various clean energy sources such as photovoltaic and wind energy, enabling flexible ...

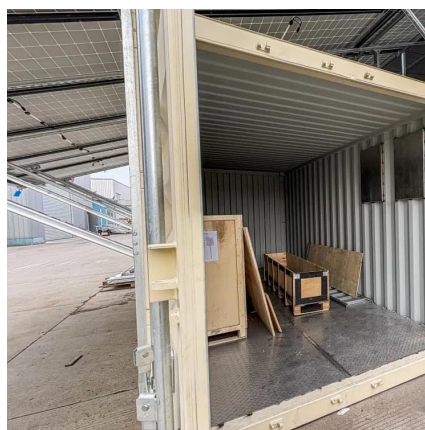
[Request Quote](#)



[Complete Guide to 5G Base Station Construction](#)

Outdoor base stations integrate all essential systems into a single Integrated Cabinet, designed to endure harsh conditions like direct ...

[Request Quote](#)



Telecommunication base station system working principle and ...

Operational principle The ESB-series outdoor base station system utilizes solar energy and diesel engines to achieve uninterrupted off grid power supply.

[Request Quote](#)





Contact Us

For catalog requests, pricing, or partnerships, please visit:

<https://www.energyinnovationday.pl>

Phone: +48 22 335 1273

Email: info@energyinnovationday.pl

Scan the QR code to contact us via WhatsApp.

