



# Withdrawable circuit breaker in Switzerland





## Overview

---

Locate Circuit Breakers suppliers, manufacturers & distributors in Switzerland. Interactive map of Switzerland provided.

Locate Circuit Breakers suppliers, manufacturers & distributors in Switzerland. Interactive map of Switzerland provided.

Image is for illustrative purposes only. Please refer to product description. The exact delivery date will be stated in the order confirmation. Do you need a larger quantity?

Add all products to your shopping basket and ask for your personal discount. Not Applicable - out of scope. Learn more For.

WITHDRAWABLE CIRCUIT BREAKER WITHOUT GUIDE FRAME 4-POLE; SIZE II; IEC IN=800A TO 690V; AC50/60HZ ICU=66KA AT 500V REAR CONNECTION HORIZONTAL OVERCURRENT TRIP ETU 45 LSIN PROT ADJUST. 0.4-1 IN WITH DISPLAY AND CUBICLE BUS COMM./MEASURING FUNC./EARTH FLT./ZSS OPTION MOT./MAN. OPER.MECHAN. W.STOR.

Locate Circuit Breakers suppliers, manufacturers & distributors in Switzerland. Interactive map of Switzerland provided.

Learn the difference between fixed and withdrawable switchgear in this informative video. Find out how withdrawable switchgear works and when to use it in medium and low voltage applications. Low voltage switchgear course - <https://courses.theelectricalguy.in/>. What is interlock - • Switchgear.

Circuit breakers play a vital role in electrical switchgear systems, ensuring the protection and control of electrical networks. One of the critical decisions when designing or upgrading switchgear is choosing between fixed and withdrawable circuit breakers. Each type has its advantages and is.

Withdrawable chassis circuit breakers offer three positions, with transfer from one to the other after mechanical unlocking: Connected: the power circuits are connected. Disconnected: the power circuits are disconnected, the circuit breaker can be operated to check auxiliary operation. Removed: the.



## Withdrawable circuit breaker in Switzerland



### Switchgear Circuit Breakers: When to Use Fixed vs. Withdrawable ...

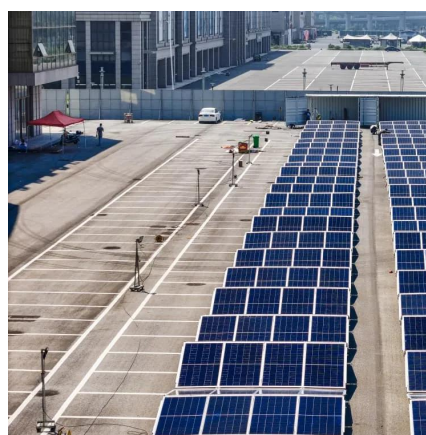
While withdrawable circuit breakers offer ease of maintenance and reduced downtime, they come at a higher cost and require more space. Fixed circuit breakers, on the ...

[Request Quote](#)

### 191547 NZMH3-AX630-AVE

Buy Eaton Moeller NZM MCCB Molded Case Circuit Breaker 3P 630A, Breaking Capacity 9 kA, Withdrawable. Shop our latest Miscellaneous Circuit Breakers offers. Free Next Day Delivery ...

[Request Quote](#)



### [Fixed vs Withdrawable Switchgear , Which Should You Choose?](#)

Learn the difference between fixed and withdrawable switchgear in this informative video. Find out how withdrawable switchgear works and when to use it in medium and low voltage applications.

[Request Quote](#)

### [UniGear ZS1 Portfolio , Medium Voltage Product , ABB](#)

UniGear ZS1, up to 24 kV, is a medium voltage air-insulated switchgear (AIS) with withdrawable circuit-breaker VD4 for primary distribution suitable for indoor installations.



[Request Quote](#)



## Withdrawable Circuit Breaker

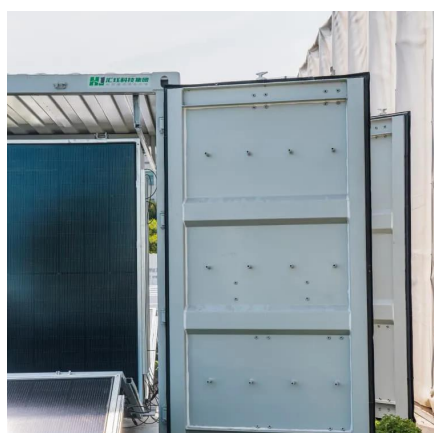
Open the circuit breaker before disconnecting it. If the circuit breaker is in the closed I (ON) position when disconnecting, a safety mechanism ensures that the poles open automatically ...

[Request Quote](#)

## Fixed Device vs Withdrawable Device

In chassis-mounted withdrawable devices, we again find moulded case circuit breakers and air circuit breakers, as shown in the images below.

[Request Quote](#)



## MV Switchgears - Memico

50,000 CO operations at rated current and 100 full rated short-circuit operations without any maintenance make it the most reliable circuit breaker on the market.

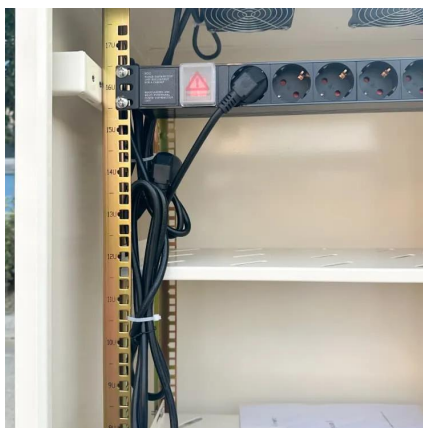
[Request Quote](#)

[Circuit Breakers Suppliers in Switzerland](#)



Locate Circuit Breakers suppliers, manufacturers & distributors in Switzerland. Interactive map of Switzerland provided.

[Request Quote](#)



[1SDA073920R1 ABB, Circuit Breaker Accessory, ABB SACE ...](#)

Buy 1SDA073920R1 - ABB - Circuit Breaker Accessory, ABB SACE Emax 2 Series Circuit Breakers, Fixed Withdrawable Part. Farnell Switzerland offers fast quotes, same day dispatch, ...

[Request Quote](#)

## CIRCUIT BREAKER LEUKHARDT

CIRCUIT BREAKER VL160X N STANDARD BREAKING CAPACITY ICU=55KA; 415V AC 4-POLE; LINE PROTECTION TRIP UNIT TM; LI IN=20A; RATED CURRENT IR=20A; ...

[Request Quote](#)





## Contact Us

---

For catalog requests, pricing, or partnerships, please visit:

<https://www.energyinnovationday.pl>

Phone: +48 22 335 1273

Email: [info@energyinnovationday.pl](mailto:info@energyinnovationday.pl)

Scan the QR code to contact us via WhatsApp.

