



Withdrawable circuit breaker in Japan





Overview

Japanese manufacturers have developed compact and modular circuit breakers that occupy less space without compromising performance. These designs facilitate easier installation and scalability, catering to the needs of both small-scale and large-scale projects.

Japanese manufacturers have developed compact and modular circuit breakers that occupy less space without compromising performance. These designs facilitate easier installation and scalability, catering to the needs of both small-scale and large-scale projects.

The M-Cube is designed for use in Motor Control Centre (MCC), Power Control Centre (PCC) and Main switchboard applications. Our low voltage MCC & PCC are suitable for use in applications such as marine, utility, chemical, oil and gas, mass-production manufacturing, semiconductor and water & waste.

Japan Low-voltage Withdrawable Switchgear Market was valued at USD 0.9 Billion in 2022 and is projected to reach USD 1.3 Billion by 2030, growing at a CAGR of 4.2% from 2024 to 2030. The Japan low-voltage withdrawable switchgear market has witnessed significant growth across industrial.

Due to recent concerns about semiconductor procurement, the timing of the launch of the new MCCB TemBreak PRO is being affected. We apologize for the inconvenience, but we ask that you consider adopting it with the conventional TemBreak2. TemBreak PRO is launched for Asia and Australia at this.

Withdrawable Switchgear Module COMPASS and COMPASS I 110 - 170 kV Compact air-insulated switchgear is fully assembled and tested in factory. A COMPASS module includes all the high voltage functions of a complete switchgear bay in a single module. It is suited for both indoor and outdoor.

Circuit breakers are essential components in electrical systems, protecting equipment and ensuring safety by interrupting excessive current. Japan's journey in enhancing circuit breaker technology is marked by a relentless pursuit of improvement and adaptation to evolving market needs. In the.

Switches are typically used for turning power on and off to particular devices.



Circuit Breakers, on the other hand, serve the purpose of circuit protection in the event of overcurrent or electric leakage. Terminal blocks consist of multiple terminals for connecting, joining or branching the flow.



Withdrawable circuit breaker in Japan



[BOKR ELEC Withdrawable Circuit Breaker Manufacturer, ...](#)

Introducing the innovative Withdrawable Circuit Breaker from Bokong Electric. This cutting-edge solution is designed to provide enhanced safety and efficiency in electrical distribution systems.

[Request Quote](#)

[Circuit breakers|PRODUCTS|TERASAKI ELECTRIC CO.,LTD](#)

Due to recent concerns about semiconductor procurement, the timing of the launch of the new MCCB TemBreak PRO is being affected. We apologize for the inconvenience, but we ask that ...

[Request Quote](#)



LV Switchgear (Fixed & Withdrawable)

These fixed-type columns and modules are designed with breaker compartments, allowing circuit breakers to be mounted on horizontal plates. Other switchgear components, such as ...

[Request Quote](#)

MV Switchgears - Memico

50,000 CO operations at rated current and 100 full rated short-circuit operations without any maintenance make it the most reliable circuit ...

[Request Quote](#)



MV Switchgears - Memico

50,000 CO operations at rated current and 100 full rated short-circuit operations without any maintenance make it the most reliable circuit breaker on the market.

[Request Quote](#)



[Japan Low-voltage Withdrawable Switchgear Market Size By](#)

It refers to analyzing the market size, growth trends, and opportunities of the Japan Low-voltage Withdrawable Switchgear Market industry based on its usage across ...

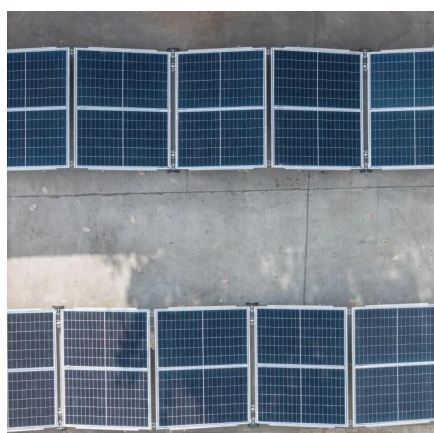
[Request Quote](#)



Japan Circuit Breaker Market Report by Product Type, Voltage

The Japan circuit breaker market size reached USD 340.4 Million in 2024. Looking forward, IMARC Group expects the market to reach USD 532.6 Million by 2033, exhibiting a ...

[Request Quote](#)



[Withdrawable Switchgear Module](#)



[COMPASS and ...](#)

COMPASS can be serviced and inspected easily by lowering a section of the module, which includes circuit-breakers, current transformers and the ...

[Request Quote](#)



Circuit Breakers, Switches & Terminal Blocks|Products|NITTO ...

Our Plug-in Circuit Breakers do not require screw termination for installation. Our Trip-Free Switches use the same casing as circuit breakers but without trip element inside. Our DC ...

[Request Quote](#)

[MV&LV Switchgear and Control Center , Fuji Electric Global](#)

In particular, the withdrawable circuit breaker is equipped with a complete mechanical interlock to prevent operating errors. In addition, the door can be padlocked to prevent accidents caused ...

[Request Quote](#)



Unlocking the Power of Japanese Manufacturing: Circuit Breaker

Japanese manufacturers have developed compact and modular circuit breakers that occupy less space without compromising performance. These designs facilitate easier ...

[Request Quote](#)

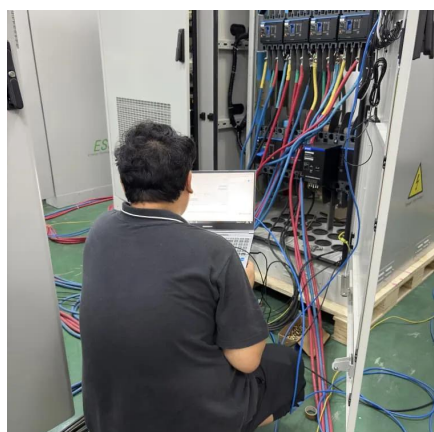
LV Switchgear (Fixed &



Withdrawable)

These fixed-type columns and modules are designed with breaker compartments, allowing circuit breakers to be mounted on horizontal ...

[Request Quote](#)



[MV&LV Switchgear and Control Center , Fuji ...](#)

In particular, the withdrawable circuit breaker is equipped with a complete mechanical interlock to prevent operating errors. In addition, the door can ...

[Request Quote](#)

[Circuit Breakers, Switches & Terminal ...](#)

Our Plug-in Circuit Breakers do not require screw termination for installation. Our Trip-Free Switches use the same casing as circuit breakers but ...

[Request Quote](#)



[Withdrawable Switchgear Module COMPASS and COMPASS I ...](#)

COMPASS can be serviced and inspected easily by lowering a section of the module, which includes circuit-breakers, current transformers and the mobile contacts of the disconnecter.

[Request Quote](#)



Contact Us

For catalog requests, pricing, or partnerships, please visit:

<https://www.energyinnovationday.pl>

Phone: +48 22 335 1273

Email: info@energyinnovationday.pl

Scan the QR code to contact us via WhatsApp.

