



Windhoek consumes electricity 5G base station





Windhoek consumes electricity 5G base station



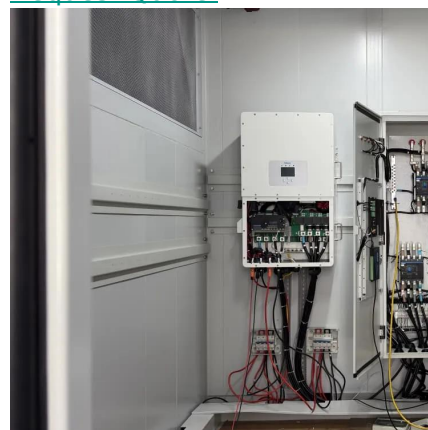
[A technical look at 5G energy consumption and performance](#)

base station Must include: Windhoek · base station yingdapc

Why does 5g base station consume so much ...

5G base stations use high power consumption and high RF signals, which require more signal processing for digital and ...

[Request Quote](#)



How much power does 5G consume?

One 5G base station is estimated to consume about as much power as 73 households (6), and 3x as much as the previous generation of base stations (5), (7). When base stations, data centers ...

[Request Quote](#)



How Much Power Does a 5G Base Station Consume? - Smart Solar

On average, a 5G base station consumes between 1,000 to 3,000 watts. This is significantly higher than 4G base stations, which typically consume 500 to 1,500 watts.

[Request Quote](#)

[A technical look at 5G energy consumption and performance](#)

The model shows that there is significant energy



consumption in the base station even at the times when there is no output power i.e. when the base station is in an idle state.

[Request Quote](#)



[Windhoek communication base station energy storage battery](#)

Among the potential applications of repurposed EV LIBs, the use of these batteries in communication base stations (CBSs) is one of the most promising candidates owing to the ...

[Request Quote](#)

What is 5G Energy Consumption?

Increased consumption has raised the importance of 5G energy savings for operators and service providers who already dedicate a considerable portion their OPEX budgets to power.

[Request Quote](#)



5G and renewable energy in Namibia

At the core of Namibia's renewable energy strategy are 5G-powered grids. These sophisticated networks, equipped with an array of sensors and internet of things devices, ...

[Request Quote](#)

Why does 5g base station consume



so much power and how to ...

5G base stations use high power consumption and high RF signals, which require more signal processing for digital and electromechanical units, and also put greater pressure ...

[Request Quote](#)



The energy use implications of 5G: Reviewing whole network ...

We find that the embodied energy use and indirect energy use effects of 5G have been largely overlooked in this literature. Insufficient attention has been paid to 5G-driven user ...

[Request Quote](#)



Energy Efficiency for 5G and Beyond 5G: Potential, ...

Simulation results demonstrated the effectiveness of the proposed technology in reducing energy consumption and improving ...

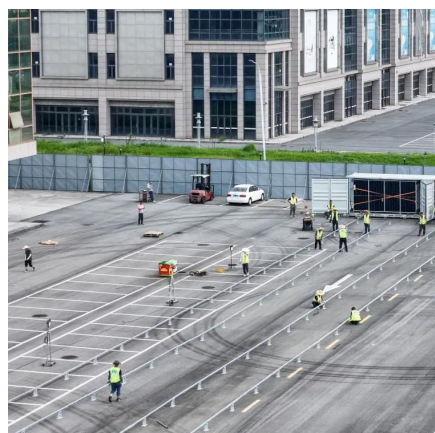
[Request Quote](#)



Windhoek consumes electricity 5G base station

On average, a 5G base station consumes between 1,000 to 3,000 watts. This is significantly higher than 4G base stations, which typically consume 500 to 1,500 watts.

[Request Quote](#)



Energy Efficiency for 5G and Beyond



5G: Potential, Limitations, ...

Simulation results demonstrated the effectiveness of the proposed technology in reducing energy consumption and improving energy efficiency in 5G base station networks.

[Request Quote](#)





Contact Us

For catalog requests, pricing, or partnerships, please visit:

<https://www.energyinnovationday.pl>

Phone: +48 22 335 1273

Email: info@energyinnovationday.pl

Scan the QR code to contact us via WhatsApp.

