



Which inverter is the grid-connected inverter





Overview

On-grid inverters, also known as grid-tied inverters, are designed to operate with the public electricity grid. These inverters convert the direct current (DC) generated by solar panels into alternating current (AC), which is used by most household and commercial appliances.

On-grid inverters, also known as grid-tied inverters, are designed to operate with the public electricity grid. These inverters convert the direct current (DC) generated by solar panels into alternating current (AC), which is used by most household and commercial appliances.

A grid-tie inverter converts direct current (DC) into an alternating current (AC) suitable for injecting into an electrical power grid, at the same voltage and frequency of that power grid. Grid-tie inverters are used between local electrical power generators: solar panel, wind turbine.

A specialized inverter receives power from your solar panels and converts the DC voltage they produce directly into grid-compatible AC power. The grid-tie inverter enables your home to not just import power from the utility, but export power to the utility as well. When solar energy is available.

An inverter is one of the most important pieces of equipment in a solar energy system. It's a device that converts direct current (DC) electricity, which is what a solar panel generates, to alternating current (AC) electricity, which the electrical grid uses. In DC, electricity is maintained at.

Inverter classification according to Interconnection types is discussed in EME 812 (11.4. Grid connection and role of inverters). Aside from the modes of operation, grid-connected inverters are also classified according to configuration topology. There are four different categories under this.

Grid-connected inverters are power electronic devices that convert direct current (DC) power generated by renewable energy sources, such as solar panels or wind turbines, into alternating current (AC) power that can be fed into the electrical grid or used locally. The primary function of a.

Grid-tied inverters are essential components in solar power systems that aim to



supply electricity to the grid. They are designed to convert the direct current (DC) generated by solar panels into alternating current (AC), which is compatible with the utility grid. By carefully synchronizing with.



Which inverter is the grid-connected inverter



[How Solar Inverter is Connected to the Grid](#)

Synchronous inverters only operate with the grid and so are also called "grid-following" inverters. For safety reasons, they turn off ...

[Request Quote](#)

[How Solar Inverter is Connected to the Grid](#)

Synchronous inverters only operate with the grid and so are also called "grid-following" inverters. For safety reasons, they turn off when the grid goes down to prevent ...

[Request Quote](#)



What is a Grid-Tied Inverter?

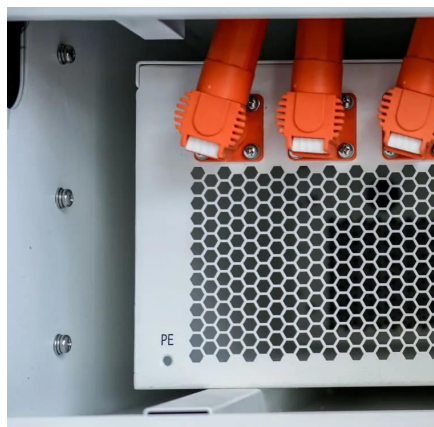
A specialized inverter receives power from your solar panels and converts the DC voltage they produce directly into grid-compatible AC power. The grid-tie inverter enables your ...

[Request Quote](#)

Grid-tie inverter

Grid-tie inverters convert DC electrical power into AC power suitable for injecting into the electric utility company grid. The grid tie inverter (GTI) must match the phase of the grid and maintain ...

[Request Quote](#)



[Grid-Connected Inverters: The Ultimate Guide](#)

Grid-connected inverters are power electronic devices that convert direct current (DC) power generated by renewable energy sources, such as solar panels or wind turbines, ...

[Request Quote](#)

How Grid-Tied Inverters Synchronize Solar Power with Utility Grids

At the heart of any solar power system connected to the grid is the grid-tied inverter. Unlike standalone solar systems, which rely on batteries for energy storage, grid-tied ...

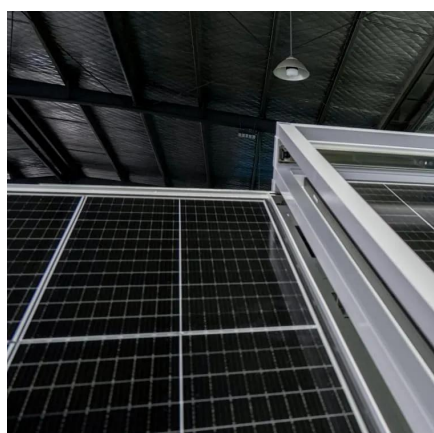
[Request Quote](#)



[Solar Integration: Inverters and Grid Services Basics](#)

Traditional "grid-following" inverters require an outside signal from the electrical grid to determine when the switching will occur in order to ...

[Request Quote](#)



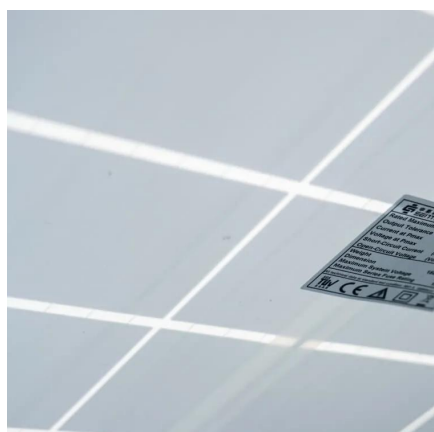
[What Is a Grid Tie Inverter? See Why](#)



[Experts Recommend It](#)

What Is a Grid-Tie Inverter? A grid-tie inverter, also known as a grid-connected inverter, is a device that allows your solar energy system to work in tandem with the electrical ...

[Request Quote](#)



Inverter types and classification , AE 868: Commercial Solar ...

Aside from the modes of operation, grid-connected inverters are also classified according to configuration topology. There are four different categories under this classification.

[Request Quote](#)

What is a Grid-Tied Inverter?

A specialized inverter receives power from your solar panels and converts the DC voltage they produce directly into grid-compatible ...

[Request Quote](#)



[Understanding Solar Inverters: On-Grid, Off-Grid and Hybrid](#)

On-grid inverters, also known as grid-tied inverters, are designed to operate with the public electricity grid. These inverters convert the direct current (DC) generated by solar ...

[Request Quote](#)

[Inverter types and classification , AE 868:](#)



...

Aside from the modes of operation, grid-connected inverters are also classified according to configuration topology. There are four different ...

[Request Quote](#)



What Is A Grid-Tied Inverter?

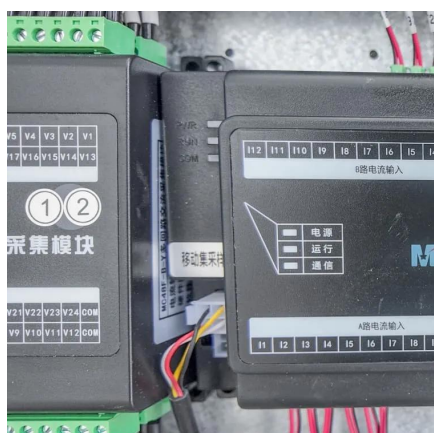
What Exactly Is a Grid-Tied Inverter? A grid-tied inverter, also known as a grid-connected or on-grid inverter, is the linchpin that connects your solar panels to the utility grid.

[Request Quote](#)

Solar Integration: Inverters and Grid Services Basics

Traditional "grid-following" inverters require an outside signal from the electrical grid to determine when the switching will occur in order to produce a sine wave that can be injected into the ...

[Request Quote](#)



What Is A Grid-Tied Inverter?

What Exactly Is a Grid-Tied Inverter? A grid-tied inverter, also known as a grid-connected or on-grid inverter, is the linchpin that connects your solar ...

[Request Quote](#)

What Is a Grid Tie Inverter? See Why



[Experts ...](#)

What Is a Grid-Tie Inverter? A grid-tie inverter, also known as a grid-connected inverter, is a device that allows your solar energy system ...

[Request Quote](#)





Contact Us

For catalog requests, pricing, or partnerships, please visit:

<https://www.energyinnovationday.pl>

Phone: +48 22 335 1273

Email: info@energyinnovationday.pl

Scan the QR code to contact us via WhatsApp.

