



# Where is the Male container wind power base station





## Overview

---

It's a 2,480-megawatt (MW) power plant in Long Island City, Queens, across from Roosevelt Island, and it's the Big Apple's largest power plant.

It's a 2,480-megawatt (MW) power plant in Long Island City, Queens, across from Roosevelt Island, and it's the Big Apple's largest power plant.

Our vision includes retiring and replacing New York's largest fossil fuel plant with renewables, and repurposing a former coal-fired power plant in New Jersey into a modern gateway for offshore wind. All of this with a focus on delivering environmental justice and providing pathways to clean energy.

Equinor's U.S. based subsidiary is developing the Empire Wind lease area in two phases. Located south of Long Island, the first phase of Empire Wind started construction in 2024. The installation of the first of 54 foundations took place in Spring 2025. Empire Wind is expected to reach its.

Find wind data and information in New York, including maps, capacity, ordinances, and more in these areas: Installed Capacity 2,627 MW Source: American Clean Power Association MW Under Construction 207 MW Source: American Clean Power Association Source: U.S. Energy Information Administration's Open.

Long Island City, New York, May 14, 2024 – Rise Light & Power achieved a significant milestone in its plan to deliver offshore wind to New York City when the New York State Department of Public Service (NYS DPS) deemed its application complete last week and officially launched public review under.

The Empire Wind 1 project received its Construction and Operations Plan (COP) approval in February 2024 and began onshore construction at the South Brooklyn Marine Terminal in Spring 2024. Marine construction activities resumed in Spring 2025, beginning with rock laying in the lease area. This.

Offshore wind delivers large-scale renewable power to areas of highest demand – New York City and Long Island. New York's first offshore wind farm, South Fork Wind, is powering 70,000 homes on Long Island with 12 turbines generating 132 megawatts of clean energy. Two larger projects are under. How many MW does a wind power plant have?



Installed Capacity 2,627 MW Source: American Clean Power Association MW Under Construction 207 MW Source: American Clean Power Association Source: U.S. Energy Information Administration's Open Data API, Electricity Net Generation. Source: U.S. Energy Information Administration. Net Generation from Wind. Updated Annually.

What will a new offshore wind hub do?

Utilizing renewable energy sources, the hub will serve as a critical plug-in point for future offshore wind infrastructure. The hub will be able to accommodate up to 1,500 megawatts or enough electricity to power 750,000 homes. Construction is expected to create more than 500 skilled union jobs.

Where can I find a list of wind research and development projects?

To view a list of wind research and development projects in New York funded by the U.S. Department of Energy's Wind Energy Technologies Office, visit the Wind R&D Projects Map and select New York from the dropdown menu.



## Where is the Male container wind power base station



### New York's Offshore Wind Projects

Offshore wind delivers large-scale renewable power to areas of highest demand - New York City and Long Island. New York's first offshore wind farm, South Fork Wind, is powering 70,000 ...

[Request Quote](#)

### [NYC will replace largest fossil fuel plant with wind power](#)

It's a 2,480-megawatt (MW) power plant in Long Island City, Queens, across from Roosevelt Island, and it's the Big Apple's largest power plant.

[Request Quote](#)



### [NYC will replace largest fossil fuel plant with wind ...](#)

It's a 2,480-megawatt (MW) power plant in Long Island City, Queens, across from Roosevelt Island, and it's the Big Apple's largest ...

[Request Quote](#)



### Renewable offshore wind power for a clean energy future , Ørsted

Sunrise Wind will be built at least 30 miles east of Long Island's Montauk Point, virtually unnoticeable from Long Island. That's as far out as the Statue of Liberty laid on its side - 519 ...



[Request Quote](#)



### Renewable offshore wind power for a clean energy future , Ørsted

Sunrise Wind will be built at least 30 miles east of Long Island's Montauk Point, virtually unnoticeable from Long Island. That's ...

[Request Quote](#)



### About the Project

This venerable New York port, is undergoing transformation to support the Empire Wind project, accommodating wind turbines and blades. The terminal will serve as the operations and ...

[Request Quote](#)



### New York's Offshore Wind Projects

Offshore wind delivers large-scale renewable power to areas of highest demand - New York City and Long Island. New York's first offshore wind ...

[Request Quote](#)

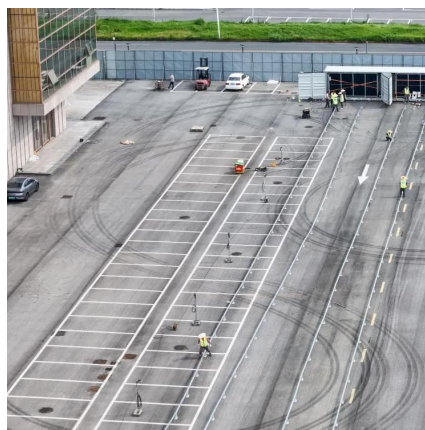


### RENEWABLE RAVENSWOOD



This innovative clean energy solution positions the 27-acre waterfront Ravenswood industrial site to serve as a central hub connecting clean energy sources, like offshore wind and upstate ...

[Request Quote](#)



### [Con Edison Breaks Ground On Brooklyn Clean ...](#)

Con Edison is building the Brooklyn Clean Energy Hub, a transmission substation that will strengthen New York's power grid, help ...

[Request Quote](#)



### **Rise Light & Power Achieves Major Milestone to Bring Offshore Wind ...**

Rise Light & Power owns and operates New York City's largest fossil power plant, the Ravenswood Generating Station, which provides 20% of the City's generating capacity.

[Request Quote](#)



### **Global Container Energy Storage Projects: From Peak-Shaving ...**

The project deploys 2MWh cold resistant container energy storage, combined with wind power to supply power to the scientific research station, and can maintain 85% charging ...

[Request Quote](#)



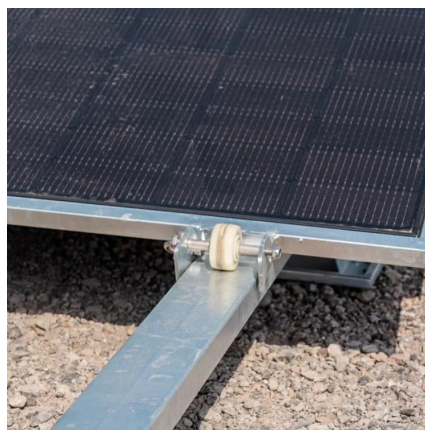
### [Con Edison Breaks Ground On Brooklyn](#)



## [Clean Energy Hub](#)

Con Edison is building the Brooklyn Clean Energy Hub, a transmission substation that will strengthen New York's power grid, help meet the region's growing demand for ...

[Request Quote](#)



## [Rise Light & Power Achieves Major Milestone to ...](#)

Rise Light & Power owns and operates New York City's largest fossil power plant, the Ravenswood Generating Station, which ...

[Request Quote](#)

## [WINDEXchange: Wind Energy in New York](#)

The United States Wind Turbine Database (USWTDB) provides the locations of land-based and offshore wind turbines in the United States, corresponding wind project information, and ...

[Request Quote](#)



## **Offshore installation**

Installation starts at the South Brooklyn Marine terminal, moves out into New York Harbor, underneath the Verrazano Bridge, and then out to the offshore substation located in the lease ...

[Request Quote](#)

## **Global Container Energy Storage**



## Projects: From Peak-Shaving Stations

...

The project deploys 2MWh cold resistant container energy storage, combined with wind power to supply power to the scientific research station, and can maintain 85% charging ...

[Request Quote](#)





## Contact Us

---

For catalog requests, pricing, or partnerships, please visit:

<https://www.energyinnovationday.pl>

Phone: +48 22 335 1273

Email: [info@energyinnovationday.pl](mailto:info@energyinnovationday.pl)

Scan the QR code to contact us via WhatsApp.

