



# Where is the Kuala Lumpur power system base station





## Overview

---

Kuala Lumpur Sentral replaces the old KL Railway Station which was built during the colonial time. As of today, this old station is being used as one of the KTM Komuter Station called Komuter Kuala Lumpur Station. The main railway station hub for KTM Komuter and KTM Intercity are.

Kuala Lumpur Sentral replaces the old KL Railway Station which was built during the colonial time. As of today, this old station is being used as one of the KTM Komuter Station called Komuter Kuala Lumpur Station. The main railway station hub for KTM Komuter and KTM Intercity are.

Kuala Lumpur Sentral Station (KL Sentral) is a transit-oriented development that houses the main railway station of Kuala Lumpur, the capital of Malaysia. Opened on 16 April 2001, KL Sentral replaced the old Kuala Lumpur railway station as the city's main inter-city railway station. KL Sentral is.

Kuala Lumpur Sentral is an exclusive urban centre built around Malaysia's largest transit hub, offering global connectivity, excellent investment opportunities, business convenience and an international lifestyle. At the nucleus of Kuala Lumpur Sentral is the RM1.1 billion world-class transit hub.

Kuala Lumpur Sentral Station (KL Sentral) is a transit-oriented development that houses the main railway station of Kuala Lumpur, the capital of Malaysia. Opened on 16 April 2001, KL Sentral replaced the old Kuala Lumpur railway station as the city's main inter-city railway station. KL Sentral is.

Kuala Lumpur Sentral - An exclusive urban centre built around Malaysia's largest transit hub, offering global connectivity, excellent investment opportunities, business convenience and an international lifestyle. The blueprint of Kuala Lumpur Sentral began with the masterplan of a.

Kuala Lumpur Sentral is both the biggest and most important railway station in all of Malaysia. More than 100,000 people use the Kuala Lumpur Sentral train station every day because it is the city's main transportation hub. Additionally, the station is connected to a vast shopping mall, hotels.

Kuala Lumpur Sentral Station (KL Sentral) is a transit-oriented development that



houses the main railway station of Kuala Lumpur, the capital of Malaysia. Opened on 16 April 2001, KL Sentral replaced the old Kuala Lumpur railway station as the city's main inter-city railway station. KL Sentral is.



## Where is the Kuala Lumpur power system base station



### [Kuala Lumpur Sentral railway station](#)

All of Kuala Lumpur's passenger rail lines except the Ampang Line serve KL Sentral, while many intercity trains serving Peninsular Malaysia and Singapore start there.

[Request Quote](#)

## Welcome to Kuala Lumpur Sentral

Kuala Lumpur Sentral is spread over 72 acres of land bordered by Jalan Travers, Jalan Damansara and Jalan Tun Sambanthan, situated in the ...

[Request Quote](#)



### [Kuala Lumpur Sentral Railway Station \(KL Sentral\)](#)

Kuala Lumpur Sentral Railway Station or KL Sentral or Stesen Sentral Kuala Lumpur is the main railway hub of Peninsular Malaysia with transit ...

[Request Quote](#)



## Welcome to Kuala Lumpur Sentral

Kuala Lumpur Sentral is spread over 72 acres of land bordered by Jalan Travers, Jalan Damansara and Jalan Tun Sambanthan, situated in the southwest of Kuala Lumpur City and ...

[Request Quote](#)



## Kuala Lumpur Sentral

As of today, this old station is being used as one of the KTM Komuter Station called Komuter Kuala Lumpur Station. The main railway station hub for KTM Komuter and KTM Intercity are ...

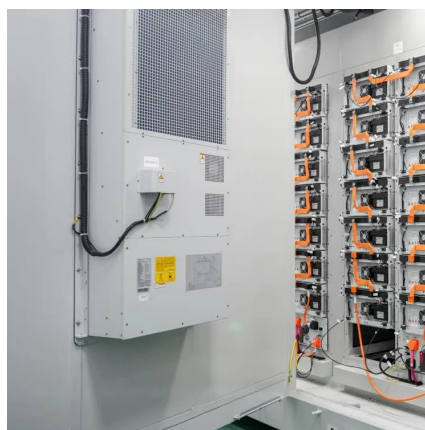
[Request Quote](#)



## KL Sentral Map

Kuala Lumpur Sentral Station is a transit-oriented development that houses the main railway station of Kuala Lumpur, the capital of Malaysia. Opened on 16 April 2001, KL Sentral replaced ...

[Request Quote](#)



## [Kuala Lumpur Sentral railway station](#)

All of Kuala Lumpur's passenger rail lines except the Ampang Line serve KL Sentral, while many intercity trains serving Peninsular ...

[Request Quote](#)



## Kuala Lumpur Sentral



As of today, this old station is being used as one of the KTM Komuter Station called Komuter Kuala Lumpur Station. The main railway station hub for ...

[Request Quote](#)



### [Kuala Lumpur Central Station , Railway Routes](#)

Find out more information about Kuala Lumpur Central Station in Asia. Learn what to find at the railroad station, how to get there, and more!

[Request Quote](#)



### **Kuala Lumpur Sentral station**

Kuala Lumpur Sentral Station (KL Sentral) is a transit-oriented development that houses the main railway station of Kuala Lumpur, the capital of Malaysia. Opened on 16 April 2001, KL Sentral ...

[Request Quote](#)



### **Welcome to Kuala Lumpur Sentral**

Kuala Lumpur Sentral - An exclusive urban centre built around Malaysia's largest transit hub, offering global connectivity, excellent investment ...

[Request Quote](#)



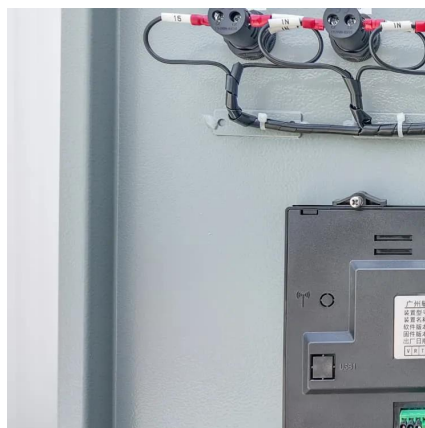
### **Kuala Lumpur Central Station ,**



## Railway Routes & Train Tickets

Find out more information about Kuala Lumpur Central Station in Asia. Learn what to find at the railroad station, how to get there, and more!

[Request Quote](#)



## Kuala Lumpur Sentral station

Kuala Lumpur Sentral station stands on the site of the former Malayan Railway's marshalling yard called the Central Railroad Repair Shops. In the Second World War during the Japanese ...

[Request Quote](#)



## Welcome to Kuala Lumpur Sentral

Kuala Lumpur Sentral - An exclusive urban centre built around Malaysia's largest transit hub, offering global connectivity, excellent investment opportunities, business convenience and an ...

[Request Quote](#)



## Kuala Lumpur Sentral station

The southern end of Kuala Lumpur Sentral has seen substantial additions of several commercial and civic buildings since 2001. Office zones in KL Sentral account for more than 50% of the ...

[Request Quote](#)



## [Kuala Lumpur Sentral Railway Station \(KL](#)



## Sentral)

Kuala Lumpur Sentral Railway Station or KL Sentral or Stesen Sentral Kuala Lumpur is the main railway hub of Peninsular Malaysia with transit-oriented developments built around it, located ...

[Request Quote](#)





## Contact Us

---

For catalog requests, pricing, or partnerships, please visit:

<https://www.energyinnovationday.pl>

Phone: +48 22 335 1273

Email: [info@energyinnovationday.pl](mailto:info@energyinnovationday.pl)

Scan the QR code to contact us via WhatsApp.

