



Where is the Dominica Energy Storage Power Station





Overview

Located in the Fond Cole Industrial Area, just north of Roseau, the power station has an installed capacity of 13.3 MW, making it one of the largest energy production sites on the island. It primarily uses diesel engines to generate power and plays a crucial role in the island's.

Located in the Fond Cole Industrial Area, just north of Roseau, the power station has an installed capacity of 13.3 MW, making it one of the largest energy production sites on the island. It primarily uses diesel engines to generate power and plays a crucial role in the island's.

Illustration of a sustainable energy concept in Dominica Dominica is taking a pragmatic step towards energy security and sustainable development, aligning with the global shift towards decarbonisation and infrastructure modernisation. The commissioning of a 6 MW / 6 MWh Battery Energy Storage.

In 2025, the Independent Regulatory Commission (IRC) will conduct site visits to assess various electricity generation projects, as part of its mandate to ensure a reliable and adequate electricity supply. The goal of these projects is to build generation capacity to meet the increasing demand for.

From Wednesday 30th April to Sunday 4th May 2025, Dominica Electricity Services Ltd. (DOMLEC) will be conducting critical testing of a recently installed Battery Energy Storage System (BESS) at its Fond Colé Power Plant, as the company enters the final stages of commissioning this battery system.

Smart Energy staff stand in front of BESS system at DOMLEC's Fond Colé. location. Photo: DOMLEC Dominica Electricity Services Ltd. (DOMLEC) is set to perform essential assessments on a newly deployed Battery Energy Storage System (BESS) at the Fond Colé Power Plant, as the company nears the.

This agreement follows the Government of the Commonwealth of Dominica's successful development of the geothermal reservoir in the Roseau Valley. At the end of the agreement term, ownership of the power plant will be transferred to the Government of This document presents Dominica's Energy Report.

Data © OpenStreetMap contributors, ODbL. International regions ©



MarineRegions.org, CC-BY. Analysis © Open Infrastructure Map, CC-BY. Purchase data exports at Infrageomatics.



Where is the Dominica Energy Storage Power Station



[DOMLEC's new Battery Energy Storage System ...](#)

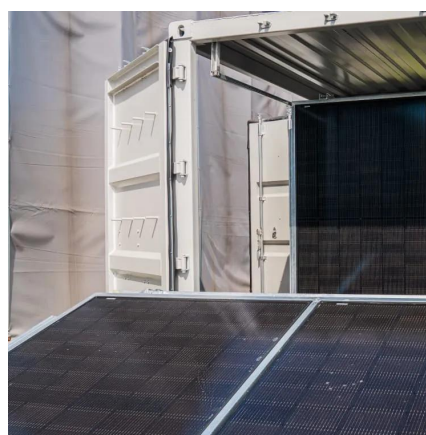
The BESS is situated in Fond Colé on land owned by the government, nestled between DOMLEC's two-generation plants, and is ...

[Request Quote](#)

IRC Evaluates Dominica's Electricity Generation Projects for 2025

6-Megawatt Battery Energy Storage System (BESS) at Fond Cole near the existing thermal station: This project is designed to help DOMLEC better integrate the 10MW Roseau ...

[Request Quote](#)



[DOMINICA MODERN ENERGY STORAGE POWER STATION ...](#)

Malawi Wind and Solar Energy Storage Power Station Located in the Dedza district of Malawi near the town of Golomoti, the 20MWac solar PV and 5MW/10MWh energy storage project is ...

[Request Quote](#)



Dominica's Energy Transformation: How BESS is Changing the ...

The commissioning of a 6 MW / 6 MWh Battery Energy Storage System (BESS), installed at the DOMLEC facility in the Fond Colé area, is nearing completion. Installation is ...



[Request Quote](#)



DOMLEC Begins Final Commissioning of Battery Energy Storage ...

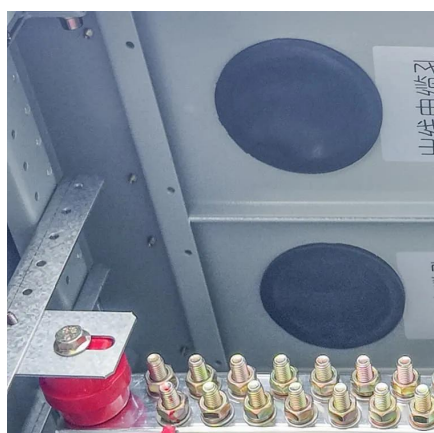
Located in Fond Colé on government-owned property between DOMLEC's two generating facilities, the BESS is manufactured by global technology leader Huawei.

[Request Quote](#)

Fond Cole Power Station - DOM767

Located in the Fond Cole Industrial Area, just north of Roseau, the power station has an installed capacity of 13.3 MW, making it one of the largest energy production sites on the island. It ...

[Request Quote](#)



[DOMLEC Begins Final Commissioning of Battery ...](#)

Located in Fond Colé on government-owned property between DOMLEC's two generating facilities, the BESS is manufactured ...

[Request Quote](#)

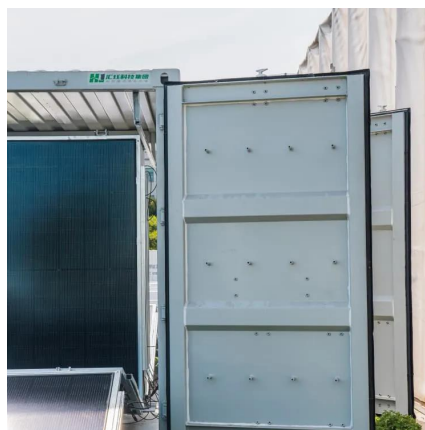
[DOMINICA ENERGY STORAGE FOR SOLAR](#)



[POWER](#)

The US\$50mn development in Dominica will support a 5MW/2.5MW-hours battery energy storage system that will aid the island's clean energy objectives. The system is forecasted to stabilise ...

[Request Quote](#)



[DOMLEC's new Battery Energy Storage System undergoes ...](#)

The BESS is situated in Fond Colé on land owned by the government, nestled between DOMLEC's two-generation plants, and is produced by the global technology firm ...

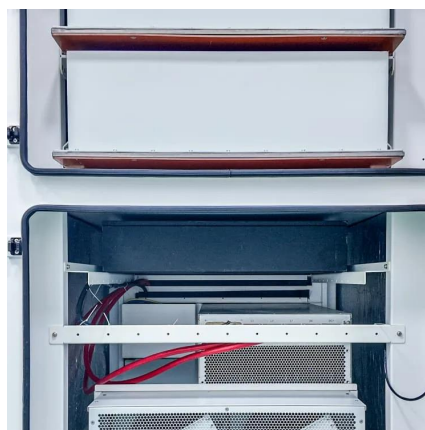
[Request Quote](#)



Storage power plant Dominica

Dominica is progressing with its first geothermal power project, with site preparation for the 10 MW plant underway. Construction is expected to begin by early 2025, following the completion of ...

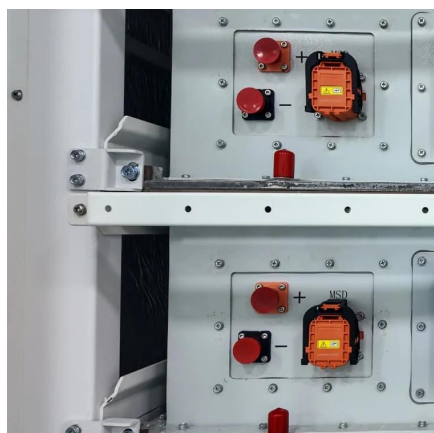
[Request Quote](#)



[Dominica Energy Storage Power Station System Powering ...](#)

Summary: Explore how Dominica's cutting-edge energy storage solutions address renewable integration challenges while enhancing grid reliability. Discover technical innovations, real ...

[Request Quote](#)



[Dominica's Energy Transformation: How](#)



[BESS is ...](#)

The commissioning of a 6 MW / 6 MWh Battery Energy Storage System (BESS), installed at the DOMLEC facility in the Fond ...

[Request Quote](#)



[IRC Evaluates Dominica's Electricity Generation ...](#)

6-Megawatt Battery Energy Storage System (BESS) at Fond Cole near the existing thermal station: This project is designed to help ...

[Request Quote](#)



Contact Us

For catalog requests, pricing, or partnerships, please visit:

<https://www.energyinnovationday.pl>

Phone: +48 22 335 1273

Email: info@energyinnovationday.pl

Scan the QR code to contact us via WhatsApp.

