



Where does the 5G base station use electricity





Overview

How much power does a 5G base station consume?

That's almost a threefold increase compared to 4G (5). One 5G base station is estimated to consume about as much power as 73 households (6), and 3x as much as the previous generation of base stations (5), (7).

Can network energy saving technologies mitigate 5G energy consumption?

This technical report explores how network energy saving technologies that have emerged since the 4G era, such as carrier shutdown, channel shutdown, symbol shutdown etc., can be leveraged to mitigate 5G energy consumption.

Does 5G New Radio save energy?

Emerging use cases and devices demand higher capacity from today's mobile networks, leading to increasingly dense network deployments. In this post, we explore the energy saving features of 5G New Radio and how this enables operators to build denser networks, meet performance demands and maintain low 5G energy consumption.

Does 5G configuration affect base station capacity?

In this study, we mainly focused on the commercial 5G non-standalone networks, 2 and the configurations (transmit and receive antennas, spectrum frequency and bandwidth) defined in this part has a decisive impact on base station capacity (see Eq.1).



Where does the 5G base station use electricity



What is 5G Energy Consumption?

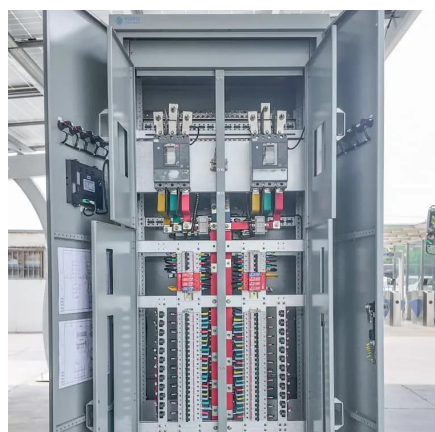
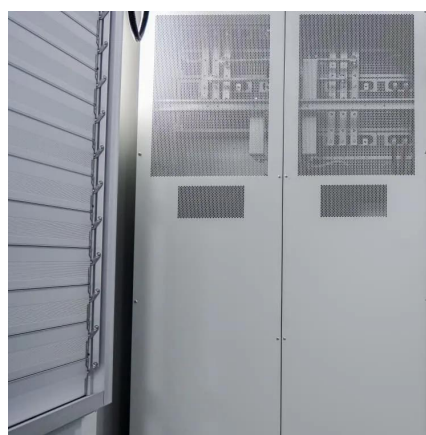
Learn how much power 5G networks consume and understand how you can reduce RAN energy use. Does Open Ran Save Energy? The Information and Communication Technology (ICT) ...

[Request Quote](#)

How much power does 5G consume?

One 5G base station is estimated to consume about as much power as 73 households (6), and 3x as much as the previous generation of base ...

[Request Quote](#)



[5G Base Stations: The Energy Consumption Challenge](#)

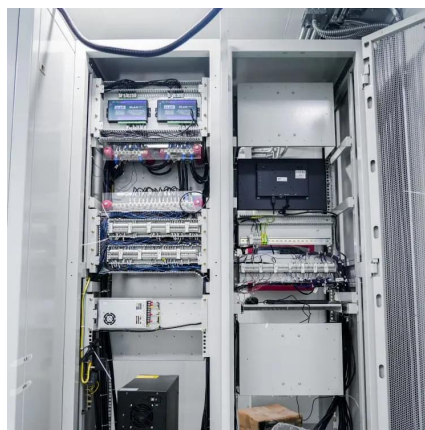
Early deployments indicate that 5G base stations require 2.5-3.5 times more power compared to a 4G one. Moreover, C-band, i.e., 3.4 GHz to 4.2 GHz, is deemed as the most ...

[Request Quote](#)

How much power does 5G consume?

One 5G base station is estimated to consume about as much power as 73 households (6), and 3x as much as the previous generation of base stations (5), (7). When base stations, data centers ...

[Request Quote](#)



Why does 5g base station consume so much power and how to ...

5G base stations use high power consumption and high RF signals, which require more signal processing for digital and electromechanical units, and also put greater pressure ...

[Request Quote](#)

[How Much Power Does 5G Base Station Consume?](#)

Have you ever wondered how much energy our hyper-connected world is consuming? 5G base stations, the backbone of next-gen connectivity, now draw 3-4 times ...

[Request Quote](#)



[Base Station Microgrid Energy Management in 5G Networks](#)

It is shown that when the 5G BS utilizes a dual power supply mode, combining mains electricity and ES backup, the power supply reliability can reach as high as 99%.

[Request Quote](#)



Final draft of deliverable



D.WG3-02-Smart Energy Saving of ...

This technical report explores how network energy saving technologies that have emerged since the 4G era, such as carrier shutdown, channel shutdown, symbol shutdown etc., can be ...

[Request Quote](#)



[A technical look at 5G energy consumption and performance](#)

5G base stations use high power consumption and high RF signals, which require more signal processing for digital and ...

[Request Quote](#)



[Energy Management of Base Station in 5G and B5G: Revisited](#)

Therefore, high density of these stations is required for actual 5G deployment, that leads to huge power consumption. It is reported that Radio Access Network (RAN) consumes almost 70% of ...

[Request Quote](#)



5G network deployment and the associated energy consumption ...

To investigate the future development and potential energy impact of 5G, this study focuses on modelling the development of 5G base stations in the UK in the next ten years by ...

[Request Quote](#)



[A technical look at 5G energy](#)



[consumption and performance](#)

To understand this, we need to look closer at the base station power consumption characteristics (Figure 3). The model shows that there is significant energy consumption in the ...

[Request Quote](#)





Contact Us

For catalog requests, pricing, or partnerships, please visit:

<https://www.energyinnovationday.pl>

Phone: +48 22 335 1273

Email: info@energyinnovationday.pl

Scan the QR code to contact us via WhatsApp.

