



Where are the wind farms located at high-rise solar container communication stations





Overview

The San Gorgonio Pass wind farm is a that stretches from the eastern slope of the , near , to , on the western end of the , in , . Flanked by and the to the North, and and the to the South, the San Gorgonio Pass is a tr.

The area surrounding Windhub A is home to several wind farms, including EDPR NA's own Rising Tree Wind Farm. The solar park complements the area's desert landscape while harnessing the region's abundant sun.

The area surrounding Windhub A is home to several wind farms, including EDPR NA's own Rising Tree Wind Farm. The solar park complements the area's desert landscape while harnessing the region's abundant sun.

Explore the largest wind farms in California and see all the utility-scale wind projects in California on a map. Michael is the CEO of Cleanview. His reporting on clean energy and data centers has been cited in The New York Times, Wall Street Journal, and hundreds of other publications. On this.

California Energy Commission develops and maintains maps and spatial information on California's energy infrastructure and related activities. Explore maps, applications, and geographic datasets to uncover valuable insights and support informed decision-making across the commission. Geographic.

The SunZia project will address a critical need by transmitting renewable energy from wind-rich areas in rural New Mexico to densely populated regions where energy demand is surging. Expansive wind farms in New Mexico will harness the region's abundant wind resources, while the SunZia high-voltage.

The San Gorgonio Pass wind farm is a wind farm that stretches from the eastern slope of the San Gorgonio Pass, near Cabazon, to North Palm Springs, on the western end of the Coachella Valley, in Riverside County, California. Flanked by Mount San Gorgonio and the Transverse Ranges to the North, and.

Windhub A Solar Park is in Kern County, California, near Mojave. The area surrounding Windhub A is home to several wind farms, including EDPR NA's own Rising Tree Wind Farm. The solar park complements the area's desert landscape while harnessing the region's abundant sun. Windhub A Solar Park.

LOS ANGELES (January 11, 2022)— The Los Angeles Department of Water and



Power (LADWP) has moved closer toward becoming 100% carbon free by 2035 with the completion of the largest, most efficient and lowest cost wind farm in LADWP's renewable energy portfolio to date. The Red Cloud Wind Project.



Where are the wind farms located at high-rise solar container commu



Windhub A Solar Park , edp

The area surrounding Windhub A is home to several wind farms, including EDPR NA's own Rising Tree Wind Farm. The solar park complements the ...

[Request Quote](#)

San Gorgonio Pass wind farm

The San Gorgonio Pass wind farm is a wind farm that stretches from the eastern slope of the San Gorgonio Pass, near Cabazon, to North Palm Springs, on the western end of the Coachella ...

[Request Quote](#)



List of the 3 largest wind farms in California [2023]

This article is based on our list of the largest wind energy developers in the USA which contains general contact details, company details as well as information about ...

[Request Quote](#)



Wind Farms in California

Here is a list of the most recently built wind farms in California. Scroll down to view information on each project like their capacity, construction date, and ...

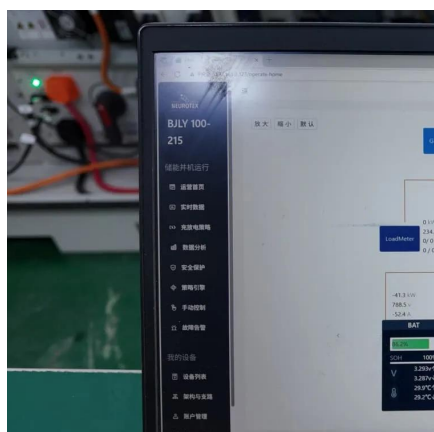
[Request Quote](#)



Wind Energy in California

The majority of wind turbines are in six regions: Altamont, East San Diego County, Pacheco, Solano, San Gorgonio, and Tehachapi. The cost of producing wind energy has decreased ...

[Request Quote](#)



[Largest and Lowest Cost Wind Farm in LADWP's History](#)

The wind power generated by Red Cloud will complement LADWP's growing solar portfolio, since wind power typically delivers power around the clock while solar stops ...

[Request Quote](#)



San Gorgonio Pass wind farm

Overview Utilities History and governance Further information See also

The San Gorgonio Pass wind farm is a wind farm that stretches from the eastern slope of the San Gorgonio Pass, near Cabazon, to North Palm Springs, on the western end of the Coachella Valley, in Riverside County, California. Flanked by Mount San Gorgonio and the Transverse Ranges to the North, and Mount San Jacinto and the Peninsular Ranges to the South, the San Gorgonio Pass is a tr...





Wind power in California

A 2009 Stanford University study of California offshore wind potential identified a site off Cape Mendocino that could provide uninterrupted year-round power from a 1500 MW wind farm that ...

[Request Quote](#)



[Request Quote](#)



Wind Farms in California

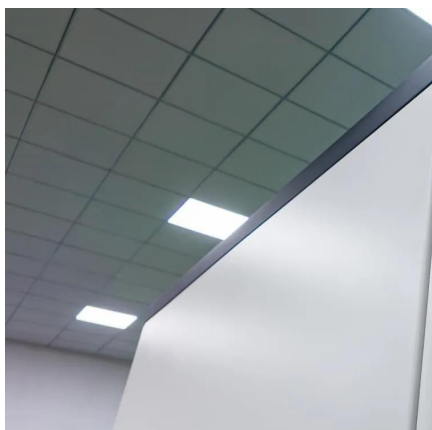
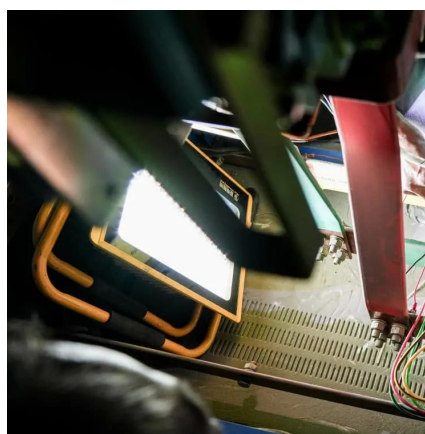
Here is a list of the most recently built wind farms in California. Scroll down to view information on each project like their capacity, construction date, and location.

[Request Quote](#)

Wind Energy in California

The majority of wind turbines are in six regions: Altamont, East San Diego County, Pacheco, Solano, San Geronio, and Tehachapi. The cost of ...

[Request Quote](#)



[List of the 3 largest wind farms in California \[2023\]](#)

This article is based on our list of the largest wind energy developers in the USA which contains general contact details, company ...

[Request Quote](#)



Energy Maps and Spatial Data

California Energy Commission develops and maintains maps and spatial information on California's energy infrastructure and related activities. ...

[Request Quote](#)



[Largest and Lowest Cost Wind Farm in LADWP's ...](#)

The wind power generated by Red Cloud will complement LADWP's growing solar portfolio, since wind power typically delivers ...

[Request Quote](#)



[The SunZia Project: A Landmark in](#)

Wind power in California

A 2009 Stanford University study of California offshore wind potential identified a site off Cape Mendocino that could provide uninterrupted year ...

[Request Quote](#)



Energy Maps and Spatial Data

California Energy Commission develops and maintains maps and spatial information on California's energy infrastructure and related activities. Explore maps, applications, and ...

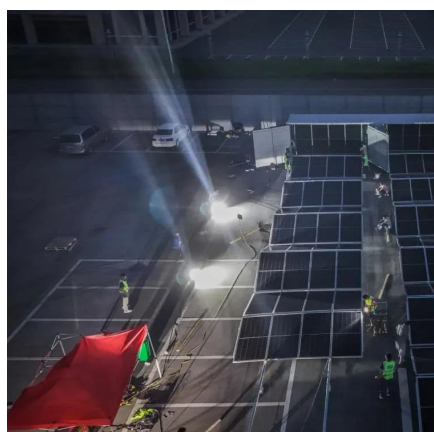
[Request Quote](#)



[Renewable Energy](#)

Expansive wind farms in New Mexico will harness the region's abundant wind resources, while the SunZia high-voltage direct current (HVDC) transmission system will efficiently transmit the ...

[Request Quote](#)



Windhub A Solar Park , edp

The area surrounding Windhub A is home to several wind farms, including EDPR NA's own Rising Tree Wind Farm. The solar park complements the area's desert landscape while harnessing ...

[Request Quote](#)

Alta Wind Energy Center

Alta Wind Energy Center (AWEC), also known as Mojave Wind Farm, is the third largest onshore wind energy project in the world. The Alta Wind Energy Center is a wind farm located in ...

[Request Quote](#)





Contact Us

For catalog requests, pricing, or partnerships, please visit:

<https://www.energyinnovationday.pl>

Phone: +48 22 335 1273

Email: info@energyinnovationday.pl

Scan the QR code to contact us via WhatsApp.

