



# What types of power-dedicated base stations are there





## Overview

---

Macro cell, Micro cell, Pico cell and Femto cell are 4 types of base stations in wireless communication networks. Macrocell antennas must be properly mounted on ground-based masts, rooftops or other existing structures and at heights for an unhindered, clear view of the surroundings.

Macro cell, Micro cell, Pico cell and Femto cell are 4 types of base stations in wireless communication networks. Macrocell antennas must be properly mounted on ground-based masts, rooftops or other existing structures and at heights for an unhindered, clear view of the surroundings.

Some basic types of base stations are as follows: Macro-base stations are tall towers ranging from 50 to 200 feet in height, placed at strategic locations to provide maximum coverage in a given area. Those are equipped with large towers and antennas that transmit and receive radio signals from.

With the large-scale rollout of 5G networks and the rapid deployment of edge-computing base stations, the core requirements for base station power systems —stability, cost-efficiency, and adaptability—have become more critical than ever. As the “power lifeline” of telecom sites, lithium batteries.

Every scenario is different — that's why we build power solutions just for you. Partner for PV market: resources, installers, distributors. Join renewable energy growth. 1 1. Telecom Base Station Power System: The Basics 1.1 What Does it Mean?

2 2. Cell Tower Energy Solution: A Popular Term in.

Macro cell, Micro cell, Pico cell and Femto cell are 4 types of base stations in wireless communication networks. Macrocell antennas must be properly mounted on ground-based masts, rooftops or other existing structures and at heights for an unhindered, clear view of the surroundings. Its.

In critical communications deployments, each environment offers physical, geographical and climatic characteristics that will be decisive when it comes to providing coverage and choosing the type of base station to propagate the radio signal. There are different types of base stations, offering a.



In telecommunications, a base station is a fixed transceiver that is the main communication point for one or more wireless mobile client devices. A base station serves as a central connection point for a wireless device to communicate. It further connects the device to other networks or devices. How much power does a base station have?

Maximum base station power is limited to 38 dBm output power for Medium-Range base stations, 24 dBm output power for Local Area base stations, and to 20 dBm for Home base stations. This power is defined per antenna and carrier, except for home base stations, where the power over all antennas (up to four) is counted.

What is base station Power?

Base station power refers to the output power level of base stations, which is defined by specific maximum limits (24 dBm for Local Area base stations and 20 dBm for Home base stations) and includes tolerances for deviation from declared power levels, as well as specifications for total power control dynamic range. How useful is this definition?

.

How many types of base stations are there?

Macro cell, Micro cell, Pico cell and Femto cell are 4 types of base stations in wireless communication networks. Macrocell antennas must be properly mounted on ground-based masts, rooftops or other existing structures and at heights for an unhindered, clear view of the surroundings.

What is the maximum base station Power?

Maximum base station power is limited to 24 dBm output power for Local Area base stations and to 20 dBm for Home base stations, counting the power over all antennas (up to four). There is no maximum base station power defined for Wide Area base stations.



## What types of power-dedicated base stations are there

---



### Base Stations and Cell Towers: The Pillars of Mobile Connectivity

Base stations are equipped with technology to manage network traffic, optimize signal strength, and ensure efficient use of the radio spectrum. They handle handovers when ...

[Request Quote](#)



### Ultimate Guide to Base Station Power Selection: Lithium vs. Lead ...

This guide breaks down the selection logic across three key dimensions: core specifications, scenario suitability, and lifecycle cost, helping you choose the right power ...

### Base Station Energy Storage: The Unsung Hero of the World ...

This isn't sci-fi - it's the base station energy storage revolution reshaping our world power grid. Let's unpack how these unassuming tech hubs are becoming grid game-changers.

[Request Quote](#)



### Base Station Energy Storage: The Unsung Hero of the World Power ...

This isn't sci-fi - it's the base station energy storage revolution reshaping our world power grid. Let's unpack how these unassuming tech hubs are becoming grid game-changers.

[Request Quote](#)



[Request Quote](#)



## Base station

What different types of base stations are there? Base stations are broadly divided into the following categories. Are base stations safe - Is it safe to live near a base station? ...

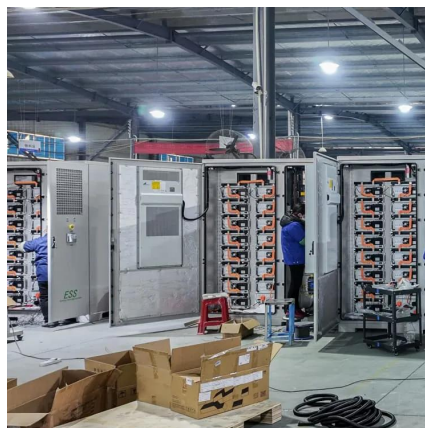
[Request Quote](#)



## 4 types of Base stations

Macro cell, Micro cell, Pico cell and Femto cell are 4 types of base stations in wireless communication networks. Macrocell antennas must be properly mounted on ground ...

[Request Quote](#)



## 4 types of Base stations

Macro cell, Micro cell, Pico cell and Femto cell are 4 types of base stations in wireless communication networks. Macrocell antennas ...

[Request Quote](#)



## EMF



Wireless systems use a network of radio base stations to provide service for mobile phones and other wireless devices. Base stations send and receive low powered radio signals to and from ...

[Request Quote](#)



## Different English Terms for Telecom Base Station Power Systems

Understand the different English terms for telecom base station power systems, including Telecom Base Station Power System, Cell Tower Energy Solution, Base Station ...

[Request Quote](#)



## Power Base Station

As mentioned in the discussion of base-station classes above, there is, however, a maximum output power limit of 38 dBm for Medium Range base stations, 24 dBm for Local Area base ...

[Request Quote](#)



## [Base station types: a solution for every deployment scenario](#)

There are different types of base stations, offering a wide variety of operating characteristics under different conditions, with a suitable solution for each type of scenario, but ...

[Request Quote](#)



## Types of Base Stations



Base stations are one of the widely used components in the field of wireless communication and networks. It is an access point or base point of a particular area for ...

[Request Quote](#)





## Contact Us

---

For catalog requests, pricing, or partnerships, please visit:

<https://www.energyinnovationday.pl>

Phone: +48 22 335 1273

Email: [info@energyinnovationday.pl](mailto:info@energyinnovationday.pl)

Scan the QR code to contact us via WhatsApp.

