



# What to do if the wind power fiber of the solar container communication station is broken





## Overview

---

Reliable fiber communications at the substation are essential for turbine monitoring, system performance, and operational safety. When the ADSS fiber supporting these systems was compromised, immediate restoration became critical to maintaining production integrity and grid.

Reliable fiber communications at the substation are essential for turbine monitoring, system performance, and operational safety. When the ADSS fiber supporting these systems was compromised, immediate restoration became critical to maintaining production integrity and grid.

With proper monitoring, homeowners can track solar output, identify unexpected drops in production, and receive alerts if something is wrong. Technicians can remotely troubleshoot systems, reducing the need for service visits. In addition, utility programs or performance-based incentives often.

What causes an abnormal shutdown of a wind turbine?

It can be inferred that the abnormal shutdown of the wind turbine may be caused by abnormal parameters such as speed and current. When establishing a WPE anomaly detection model, it is necessary to pay special attention to these parameters in order.

These are the typical jobs performed by fiber optic network technicians and specialists at utility-scale solar facilities. Commissioning – The amount of loss in a fiber optic cable determines whether it can support the desired application. When each fiber cable is installed, technicians make loss.

During a scheduled outage, a damaged 48-strand ADSS fiber line was discovered, disrupting communication between wind turbines, the substation, and critical control systems. NCS was rapidly engaged to restore the fiber communication network, protect substation operations, and complete all work.

Uzbekistan installs wind and solar hybrid communication base station As part of the implementation of the Voltalia project to build the first hybrid solar and wind power station with . This large-capacity, modular outdoor base station seamlessly integrates photovoltaic, wind power, and energy.



towards renewables is central to net-zero emissions. However, building a global power system dominated by solar and wind energy presents immense challenges. Here, we demonstrate the potential of a globally interconnected solar-wind system to meet future electricity sources on Earth vastly surpasses.



## What to do if the wind power fiber of the solar container communicat



### **New York State Wind Energy Guide**

The sections provide objective information on wind energy basics and the processes, regulations, and other important considerations involved in siting wind farms.

[Request Quote](#)

### **Wind Farm Communication: Is Your Network Sufficiently Robust?**

The communication system is a feature that is often overlooked and compromised on wind farm sites, but this should not be the case. This has become increasingly evident with ...

[Request Quote](#)



### [Solar Communication Issues & Troubleshooting](#)

Left unchecked, communication issues can reduce your return on investment, invalidate warranties, and prevent timely repairs. In this article, we explore what solar ...

[Request Quote](#)

### [Enhancing Wind Farm Monitoring with Fiber Optic Sensing ...](#)

Fiber sensing technology enables predictive maintenance by providing continuous data on the condition of wind farm components. This data allows operators to predict when ...



[Request Quote](#)



### [Fiber Optics in Utility-Scale Solar Installations , Fluke](#)

Learn why utility-scale solar facilities are most commonly networked using fiber optic technology and how to best maintain it.

[Request Quote](#)

### [La Chalupa Wind Farm Substation ADSS Fiber Restoration](#)

Reliable fiber communications at the substation are essential for turbine monitoring, system performance, and operational safety. When the ADSS fiber supporting these systems ...

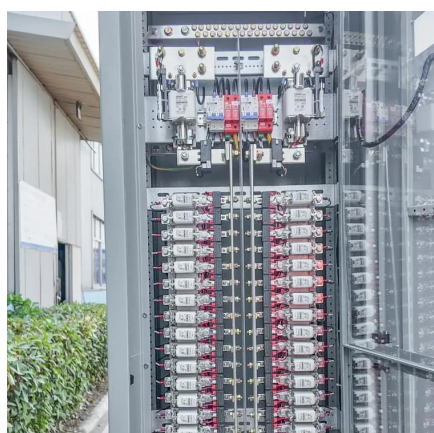
[Request Quote](#)



### [Solar container communication wind power related standards](#)

This large-capacity, modular outdoor base station seamlessly integrates photovoltaic, wind power, and energy storage to provide a stable DC48V power supply and optical distribution.

[Request Quote](#)



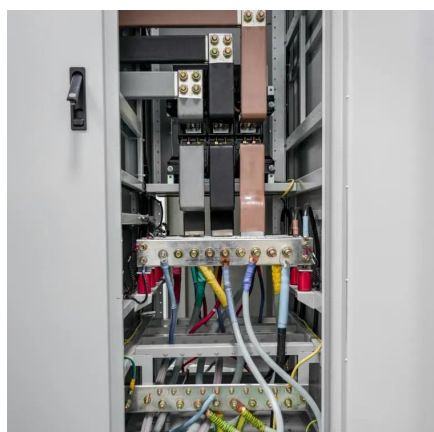
### [Solar container communication station](#)



## [wind power node](#)

A globally interconnected solar-wind power system can meet future electricity demand while lowering costs, enhancing resilience, and supporting a stable, sustainable

[Request Quote](#)



## **Solar/Renewables**

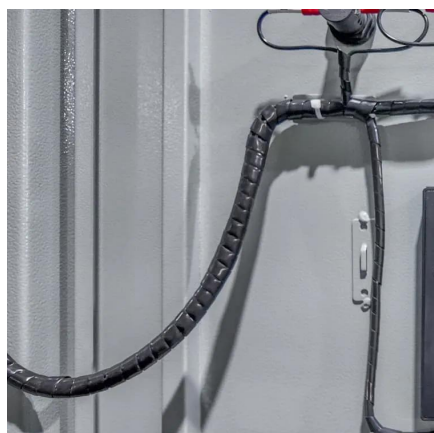
The fiber optic cabling used in many solar and wind farms is often outdated and prone to environmental damage. Additionally, older fiber cables encased in AIA are clogging the limited ...

[Request Quote](#)

## [Causes of abnormal wind power in solar container ...](#)

Causes of abnormal wind power in solar container communication stations What causes an abnormal shutdown of a wind turbine? It can be inferred that the abnormal shutdown of the ...

[Request Quote](#)



## [Solar Communication Issues & Troubleshooting](#)

Left unchecked, communication issues can reduce your return on investment, invalidate warranties, and prevent timely repairs. In this ...

[Request Quote](#)

## [Enhancing Wind Farm Monitoring with](#)



## [Fiber Optic ...](#)

Fiber sensing technology enables predictive maintenance by providing continuous data on the condition of wind farm components. This ...

[Request Quote](#)



## **Solar/Renewables**

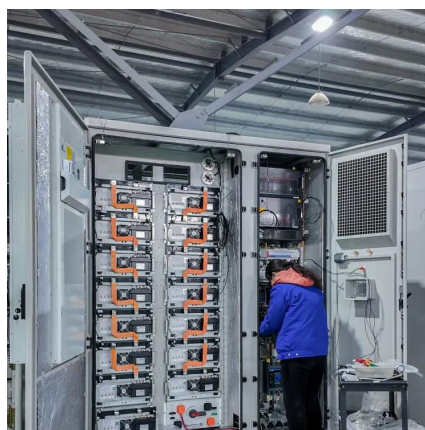
The fiber optic cabling used in many solar and wind farms is often outdated and prone to environmental damage. Additionally, older fiber cables ...

[Request Quote](#)

## [Wind Farm Communication: Is Your Network ...](#)

The communication system is a feature that is often overlooked and compromised on wind farm sites, but this should not be ...

[Request Quote](#)





## Contact Us

---

For catalog requests, pricing, or partnerships, please visit:

<https://www.energyinnovationday.pl>

Phone: +48 22 335 1273

Email: [info@energyinnovationday.pl](mailto:info@energyinnovationday.pl)

Scan the QR code to contact us via WhatsApp.

