



What size inverter is suitable for 12v200ah





Overview

For a 12V 200Ah battery, an inverter between 1000W and 2000W is generally recommended. This range balances power output and battery capacity, allowing you to run everyday electronics or small appliances efficiently without overloading the battery.

For a 12V 200Ah battery, an inverter between 1000W and 2000W is generally recommended. This range balances power output and battery capacity, allowing you to run everyday electronics or small appliances efficiently without overloading the battery.

If you plan to use 200Ah batteries to power your RV, off-grid cabin, boat, or home backup system, choosing the right inverter is critical. Using the wrong inverter can degrade the system, increase costs, and even damage equipment. In this guide, we'll help you find the best inverter for your needs.

When setting up an off-grid, solar, RV, or backup power system, one of the most critical decisions you'll make is choosing the best inverter size for your 200Ah lithium battery. Selecting the right inverter ensures optimal power delivery, system safety, and long-term battery health. This guide will.

You can run an inverter rated between 1500W and 2400W off a 200Ah lithium battery depending on voltage and usage. Typically, a 12V 200Ah battery supports up to about 2400W, while higher voltage configurations like 24V or 48V allow larger inverter sizes. Choosing a pure sine wave inverter matched to.

The ideal inverter size depends on your power needs and the battery's voltage and capacity. For a 12V 200Ah lithium battery, a 1500W to 2000W inverter is recommended to ensure efficient performance with headroom for surge loads. Proper sizing enhances system longevity and safety, as exemplified by.

Choosing the right inverter for a 200Ah battery depends on several factors, including the load size, runtime, and efficiency. The 200Ah battery is large enough to handle various types of inverters, typically ranging from 850 VA to 2000W, depending on your power requirements and the type of.

To determine the appropriate inverter size for a 200AH battery, you need to



consider the total wattage of the devices you plan to power. A general rule is to choose an inverter that can handle at least 1.5 times the total wattage of your devices. For example, if your devices require 800 watts, a. How do I choose the right inverter size for my 200Ah lithium battery?

When it comes to choosing the right inverter size for your 200Ah lithium battery, there are a few factors you'll need to consider. The first is the power needs of the devices you plan on running off the inverter. Take into account their wattage requirements and how many devices will be connected at once.

Which 12V 240V Inverter should I buy?

If you need a heavy-duty 12V to 240V inverter, the Silverline 263764 is a good, if expensive, choice. The 700W maximum output was the highest on test, and the fan didn't kick in until we plugged in the laptop and the battery charger. Another plus point was the quietness of the fan, as it was only 5dB louder than the ambient noise inside the car.

What does a 12V to 230V power inverter do?

A 12V to 230V power inverter converts 12V DC power to 230V AC power. It is ideal for various users including caravaners, truck drivers, doctors, electricians, joiners, and anyone who enjoys camping or boating.

How do I choose a battery inverter?

Additionally, pay attention to the voltage compatibility between your battery and the chosen inverter. Ensure they are both compatible (most inverters work with standard 12V batteries) and match each other's specifications for optimal performance.



What size inverter is suitable for 12v200ah



[Which Inverter is Suitable for a 200Ah Battery?](#)

For a 12V 200Ah battery, a 1000W inverter is generally a good choice. This size can power a variety of household devices, ensuring that the battery isn't over-consumed and ...

[Request Quote](#)

[What Size Inverter Do I Need for a 200AH Battery?](#)

Choosing the right inverter size for a 200AH battery is crucial for ensuring optimal performance and efficiency. This section provides detailed insights into how to calculate the ...

[Request Quote](#)



[best sized inverter for 12 volt battery](#)

After hands-on testing and side-by-side comparison, I confidently recommend the BELTTT 2000W Pure Sine Wave Inverter as your best-sized inverter for a 12-volt ...

[Request Quote](#)

[Choosing the Best Inverter Size for a 200Ah ...](#)

When setting up an off-grid, solar, RV, or backup power system, one of the most critical decisions you'll make is choosing the best ...

[Request Quote](#)



[What Size of Inverter Is Good for a 200Ah Battery?](#)

For a 12V 200Ah battery, an inverter between 1000W and 2000W is generally recommended. This range balances power output and battery capacity, allowing you to run everyday electronics or ...

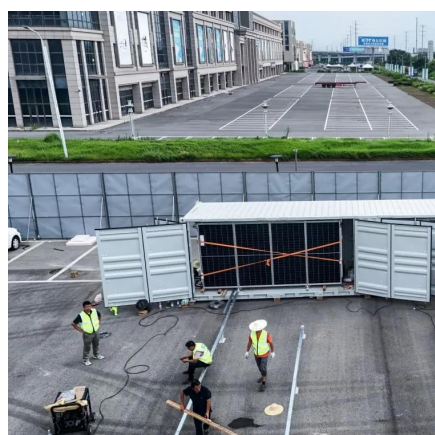
[Request Quote](#)



[What Size Inverter Do I Need for a 200Ah Lithium Battery](#)

For a 12V 200Ah lithium battery, a 1500W to 2000W inverter is recommended to ensure efficient performance with headroom for surge loads. Proper sizing enhances system ...

[Request Quote](#)



[What Size Inverter Can I Run Off a 200Ah Lithium ...](#)

You can run an inverter rated between 1500W and 2400W off a 200Ah lithium battery depending on voltage and usage. Typically, a 12V ...

[Request Quote](#)

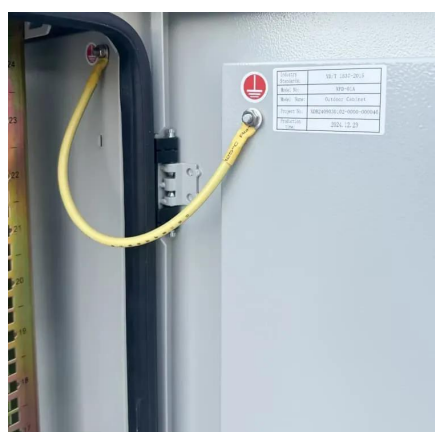
[Choosing the Best Inverter Size for a](#)



[200Ah Lithium Battery](#)

When setting up an off-grid, solar, RV, or backup power system, one of the most critical decisions you'll make is choosing the best inverter size for your 200Ah lithium battery. ...

[Request Quote](#)



[Best Inverter for 200Ah Battery: A Complete Guide 2025](#)

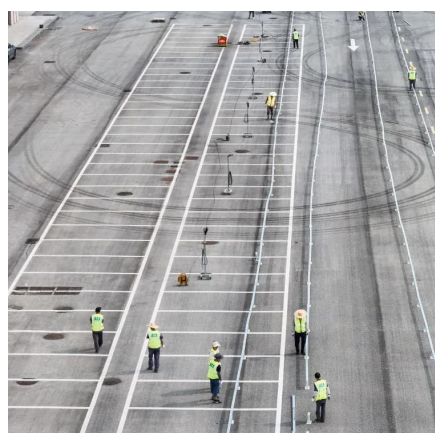
Find the best inverter for your 200Ah battery setup. Compare top models, get expert tips, and shop reliable inverters for RVs, homes, and off-grid use.

[Request Quote](#)

[What Size Inverter Do I Need for a 200Ah Lithium ...](#)

For a 12V 200Ah lithium battery, a 1500W to 2000W inverter is recommended to ensure efficient performance with headroom for surge ...

[Request Quote](#)



[What Size Inverter Can I Run Off a 200Ah Lithium Battery?](#)

You can run an inverter rated between 1500W and 2400W off a 200Ah lithium battery depending on voltage and usage. Typically, a 12V 200Ah battery supports up to about ...

[Request Quote](#)

[Which Inverter is Best for 200Ah Battery?](#)



Pure sine wave inverters are the maximum reliable alternative for a 200Ah battery. They ensure smooth cutting-edge glide, and they may be excellent for sensitive devices ...

[Request Quote](#)



[Which Inverter is Suitable for a 200Ah Battery?](#)

For a 12V 200Ah battery, a 1000W inverter is generally a good choice. This size can power a variety of household devices, ensuring that ...

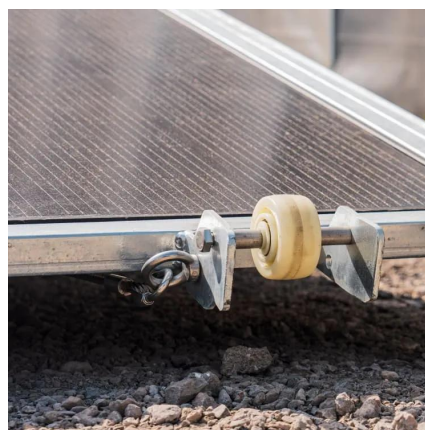
[Request Quote](#)



Choosing the Right Inverter Size for a 200Ah Lithium Battery

The ideal inverter size for a 200Ah lithium battery system depends on the voltage of the battery. For a typical 12V system, an inverter size between 1000W and 2000W is generally ...

[Request Quote](#)





Contact Us

For catalog requests, pricing, or partnerships, please visit:

<https://www.energyinnovationday.pl>

Phone: +48 22 335 1273

Email: info@energyinnovationday.pl

Scan the QR code to contact us via WhatsApp.

