



What is the size of the heaviest solar panel





Overview

Standard residential solar panels are typically around 5.8 feet long by 3.5 feet wide and weigh between 40 to 50 pounds. However, the exact dimensions depend heavily on the panel's technology, wattage, and the manufacturer's design.

Standard residential solar panels are typically around 5.8 feet long by 3.5 feet wide and weigh between 40 to 50 pounds. However, the exact dimensions depend heavily on the panel's technology, wattage, and the manufacturer's design.

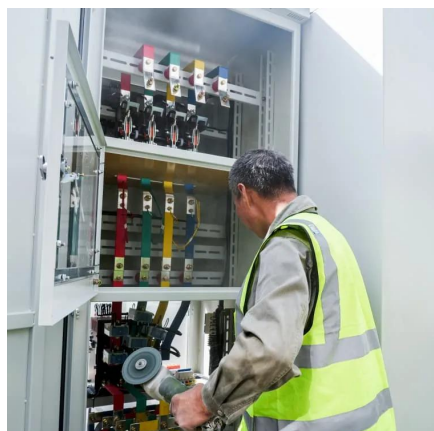
Standard Residential Panels Optimize Space and Handling: The industry-standard 60-cell panel dimensions (65" × 39" × 1.5") aren't arbitrary – they represent the optimal balance between power output, installation ease, and roof space utilization. At 40-46 pounds, they can be safely handled by.

Standard residential solar panels are typically around 5.8 feet long by 3.5 feet wide and weigh between 40 to 50 pounds. However, the exact dimensions depend heavily on the panel's technology, wattage, and the manufacturer's design. Understanding these specifications is crucial for determining roof.

Research has indicated that the median US residential solar array uses 15 to 21 panels that have a predicted area of 350-400 sq. ft on the roof. The values vary with the strength of the panel and its effectiveness. Hence, practical application can be used to get a clear understanding of what.



What is the size of the heaviest solar panel



[The 11 most powerful solar panels \[2026\]](#)

This panel, from Jolywood's JW Max line, is the lightest on an admittedly heavy list, at 37.5kg - but it packs a punch. 730W and a ...

[Request Quote](#)

[Solar Panels Size & Weight \(Including Commercial Dimensions\)](#)

Commercial solar panels typically include 72 solar cells and measure up to 6 feet wide (78 inches long by 39 inches wide). As with residential solar panels, commercial models ...

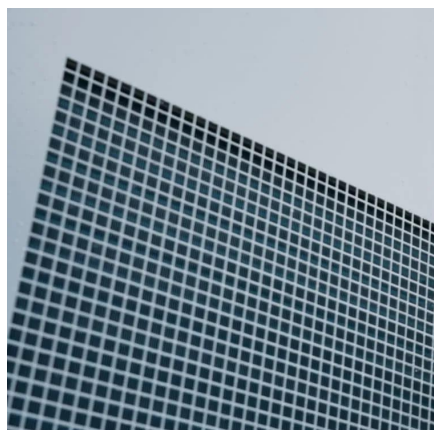
[Request Quote](#)



[Solar Panel Size and Weight: A 2025 Guide \(with Examples\)](#)

It is important to learn about the size and weight of solar panels to design smart systems. An excessively heavy panel may overload your roof, whereas an excessively large panel may ...

[Request Quote](#)



[The Ultimate Guide to Solar Panel Size, Weight](#)

Find the exact solar panel size & weight in our 2025 guide. Our complete chart compares models by ft/cm and lbs/kg to help you plan ...

[Request Quote](#)



How Big Is a Solar Panel? Understanding Solar Panel Size and ...

Residential solar panels, known for their 60-cell configuration, typically measure about 5.4 feet by 3.25 feet. In contrast, commercial solar panels, with their 72-cell setup, ...

[Request Quote](#)

[Solar Panel Size & Dimensions Guide 2025 Complete Specs](#)

In this comprehensive guide, you'll learn everything you need to know about solar panel sizing, from standard dimensions to weight considerations, helping you determine the ...

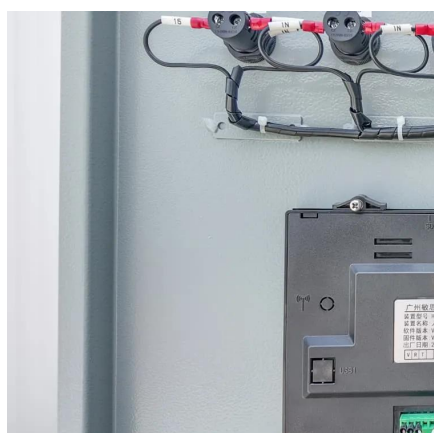
[Request Quote](#)



[What is the largest solar panel? , NenPower](#)

What is the largest solar panel? The largest solar panel is the Bifacial Solar Module, which is designed for optimal energy generation. ...

[Request Quote](#)



How Big are Solar Panels?



Solar panels come in three main cell sizes: 60-cell, 72-cell, and 96-cell. The most commonly used sizes for residential and commercial purposes are ...

[Request Quote](#)



[Standard Solar Panel Sizes And Wattages \(100W-500W ...](#)

Example: 5kW solar system is comprised of 50 100-watt solar panels. Alright, your roof square footage is 1000 sq ft. Can you put a 5kW solar system on your roof? For that, you will need to ...

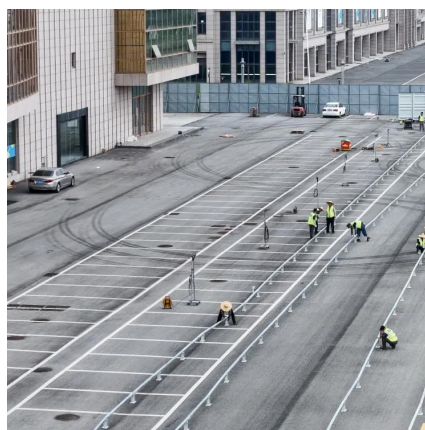
[Request Quote](#)



[Solar Panels Size & Weight \(Including Commercial Dimensions\)](#)

Commercial solar panels typically include 72 solar cells and measure up to 6 feet wide (78 inches long by 39 ...

[Request Quote](#)



[What is the largest solar panel? , NenPower](#)

What is the largest solar panel? The largest solar panel is the Bifacial Solar Module, which is designed for optimal energy generation. Currently, 1.2 meters by 2.4 meters, ...

[Request Quote](#)



Most powerful solar panels 2025



Today in 2025, we're seeing commercially available panels reaching close to 750W, and early production modules already exceeding 760W, with several manufacturers ...

[Request Quote](#)



The Ultimate Guide to Solar Panel Size, Weight & Wattage (2025)

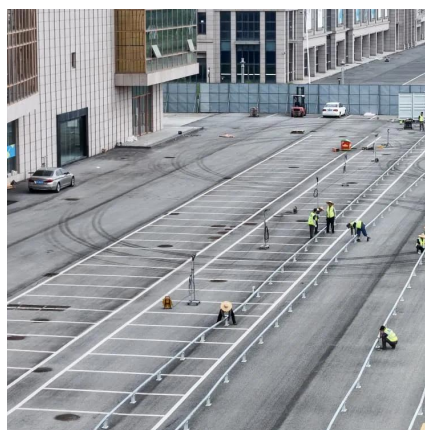
Find the exact solar panel size & weight in our 2025 guide. Our complete chart compares models by ft/cm and lbs/kg to help you plan your installation.

[Request Quote](#)

How Big are Solar Panels?

Solar panels come in three main cell sizes: 60-cell, 72-cell, and 96-cell. The most commonly used sizes for residential and commercial purposes are 60-cell and 72-cell. This is largely because ...

[Request Quote](#)



[Standard Solar Panel Sizes And Wattages \(100W ...\)](#)

Example: 5kW solar system is comprised of 50 100-watt solar panels. Alright, your roof square footage is 1000 sq ft. Can you put a 5kW solar system ...

[Request Quote](#)

[The 11 most powerful solar panels \[2026\]](#)



This panel, from Jolywood's JW Max line, is the lightest on an admittedly heavy list, at 37.5kg - but it packs a punch. 730W and a 23.5% efficiency rating may seem low compared ...

[Request Quote](#)



[How Big Is a Solar Panel? Understanding Solar ...](#)

Residential solar panels, known for their 60-cell configuration, typically measure about 5.4 feet by 3.25 feet. In contrast, commercial ...

[Request Quote](#)





Contact Us

For catalog requests, pricing, or partnerships, please visit:

<https://www.energyinnovationday.pl>

Phone: +48 22 335 1273

Email: info@energyinnovationday.pl

Scan the QR code to contact us via WhatsApp.

