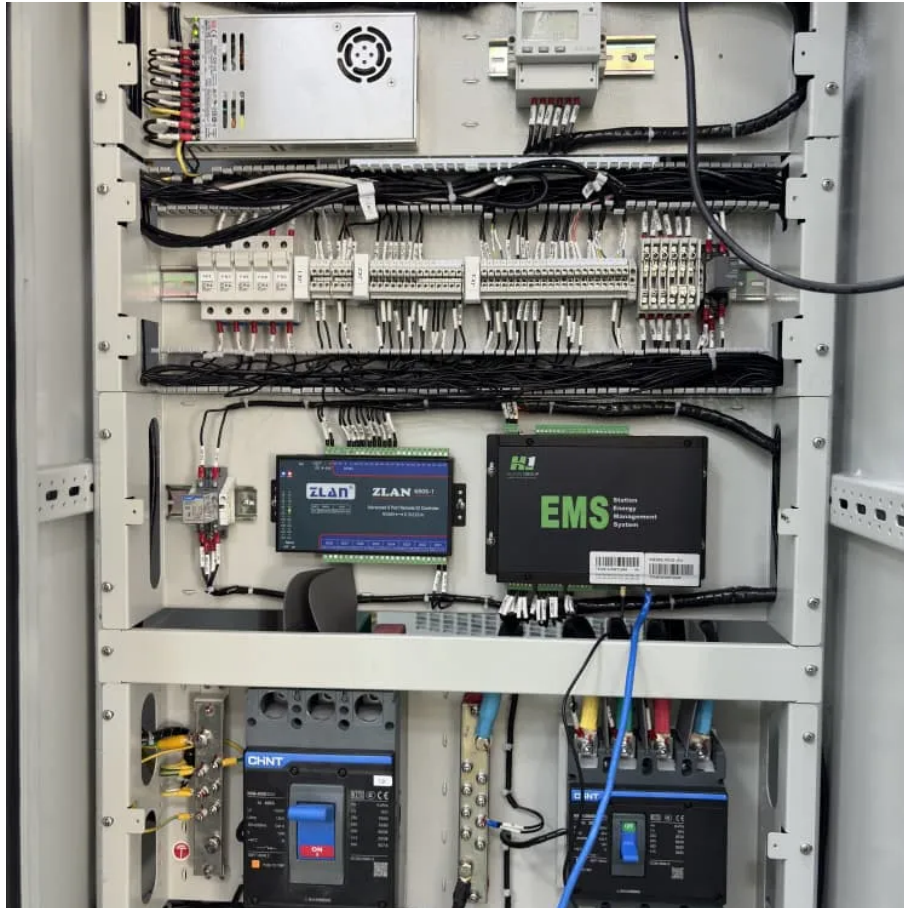




What is the size of solar panel components





Overview

The size of solar panels varies depending on the number of photovoltaic (PV) cells they include. Each cell adds to the panel's total voltage and power output. The most commonly used cell layouts are 60-cell, 72-cell, and 96-cell panels. Let's consider their main features and purpose:.

The size of solar panels varies depending on the number of photovoltaic (PV) cells they include. Each cell adds to the panel's total voltage and power output. The most commonly used cell layouts are 60-cell, 72-cell, and 96-cell panels. Let's consider their main features and purpose:.

Solar panel size is measured in watts (W) and indicates how much electricity the panel can produce under standard test conditions. Here's the key distinction every homeowner should understand: Most residential solar panels in 2025 come in three main configurations: The most common choice for.

A standard solar panel has several key layers and components: These are the heart of the panel — small semiconductor wafers (usually silicon-based) that absorb sunlight and generate electricity through the photovoltaic effect. Panels typically contain 60, 72, or 96 individual solar cells. Source:.

A solar module is the technical term for a solar panel. It consists of a group of photovoltaic (PV) cells arranged and enclosed in a frame. These modules work together to absorb sunlight and convert it into usable electricity. Modules are standardized for commercial and residential applications.

However, behind the jargon lies a clear system of industry standards that dictates the standard solar panel sizes you see on homes and commercial properties worldwide. Getting these dimensions right is the difference between an optimized, high-output system and a frustrating, inefficient.

A solar panel, or photovoltaic module, is an assembly of individual solar cells that convert sunlight into electricity. The concept of "size" for these modules encompasses both their physical footprint and their electrical power rating. Understanding this dual meaning is the first step in.

Solar panel size shapes everything from the watts to the ease of lifting a module



onto a roof. The insights that follow weigh the gains and compromises of large versus compact panels, helping you choose a size that truly fits - Solar panel size is the key metric of every installation. A standard.



What is the size of solar panel components



[Solar Panel Size And Weight: A Comprehensive Guide](#)

The standard residential solar photovoltaic panel size you'll see most often is based on a 60-cell configuration, typically measuring about 67 inches long by 40 inches wide.

[Request Quote](#)

[standard solar photovoltaic panel sizes explained](#)

The standard residential solar photovoltaic panel size you'll see most often is based on a 60-cell configuration, typically measuring about 67 inches long by 40 inches wide.

[Request Quote](#)



[The Ultimate Guide to Solar Panel Dimensions and Sizes](#)

Solar panel dimensions and sizes refer to the physical measurements of a solar panel, including its length, width, and thickness. These measurements show how much space ...

[Request Quote](#)



[How To Size A Solar PV System - A Step-by-Step Guide](#)

When considering the switch to solar energy, one of the most crucial steps is sizing your system correctly. Solar system sizing is the process of determining the right ...



[Request Quote](#)



[Detailed Guide to Solar Panel Size & Dimensions](#)

The standard solar panel size is approximately 66 x 39 inches and typically contains 60 cells. For commercial use, panels are usually 77 x 39 inches with 72 cells, offering ...

[Request Quote](#)



[Solar Panel Size Guide , Best Panel Size for Your Roof](#)

Learn how to choose the ideal solar panel size for your home. Get expert tips, standard dimensions, and a size chart to simplify your solar decisions.

[Request Quote](#)



[Solar Module Size - Key Insights for Efficient Solar ...](#)

In this final guide of our solar series, we'll break down everything you need to know about solar module sizing, from the science ...

[Request Quote](#)



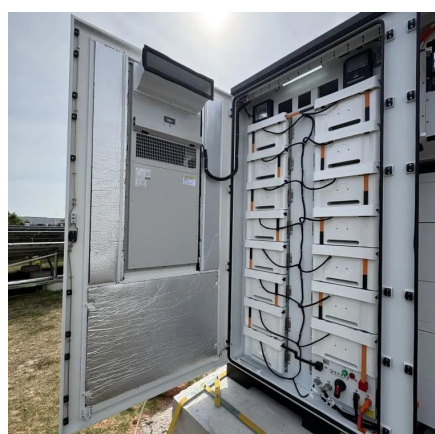
[What Size Are Solar Panels and How Much](#)



[Power Do They ...](#)

A solar panel, or photovoltaic module, is an assembly of individual solar cells that convert sunlight into electricity. The concept of "size" for these modules encompasses both ...

[Request Quote](#)



[The Ultimate Solar Panel Size Guide for Every Homeowner](#)

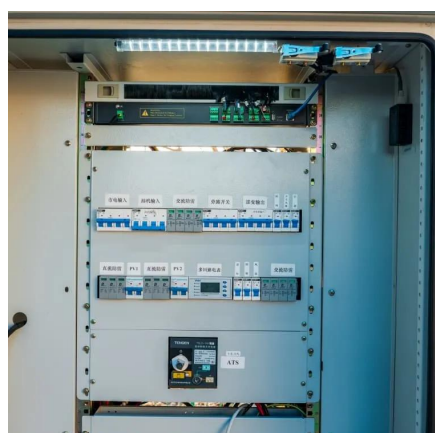
What Is the Standard Size of a Solar Panel? The industry has established common panel formats such as 60-cell and 72-cell modules, which continue to dominate both ...

[Request Quote](#)

[Solar Module Size - Key Insights for Efficient Solar Design](#)

In this final guide of our solar series, we'll break down everything you need to know about solar module sizing, from the science behind cell configurations to real-world ...

[Request Quote](#)



[Solar Panel Size Guide , Best Panel Size for Your ...](#)

Learn how to choose the ideal solar panel size for your home. Get expert tips, standard dimensions, and a size chart to simplify your ...

[Request Quote](#)

[The Ultimate Guide to Solar Panel](#)



[Dimensions and ...](#)

Solar panel dimensions and sizes refer to the physical measurements of a solar panel, including its length, width, and thickness. ...

[Request Quote](#)



[Solar Panel Size & Dimensions Guide 2025 _ Complete Specs](#)

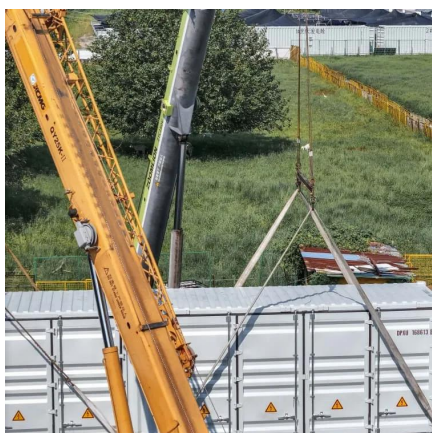
In this comprehensive guide, you'll learn everything you need to know about solar panel sizing, from standard dimensions to weight considerations, helping you determine the ...

[Request Quote](#)

[Detailed Guide to Solar Panel Size & Dimensions](#)

The standard solar panel size is approximately 66 x 39 inches and typically contains 60 cells. For commercial use, panels are usually 77 ...

[Request Quote](#)



[Solar Panel Size And Weight: A Comprehensive Guide](#)

When considering residential solar panels, typical configurations consist of 60 cells measuring approximately 3.25 feet by 5.5 feet. These panels cover an area of 17.62 square feet and weigh

[Request Quote](#)



Contact Us

For catalog requests, pricing, or partnerships, please visit:

<https://www.energyinnovationday.pl>

Phone: +48 22 335 1273

Email: info@energyinnovationday.pl

Scan the QR code to contact us via WhatsApp.

