



What is the purpose of base station communication equipment





Overview

In the area of wireless computer networking, a base station is a radio receiver/transmitter that serves as the hub of the local wireless network, and may also be the gateway between a wired network and the wireless network. It typically consists of a low-power transmitter and .

A base station is a critical component of wireless communication networks. It serves as the central point of a network that connects various devices, such as smartphones, tablets, and computers. The base station transmits and receives signals, ensuring seamless communication over.

A base station is a critical component of wireless communication networks. It serves as the central point of a network that connects various devices, such as smartphones, tablets, and computers. The base station transmits and receives signals, ensuring seamless communication over.

The idea of base stations is anchored in their function to provide coverage, capacity, and connectivity, hence allowing for extending the working capabilities of mobile phones and other radio gear. What is Base Station?

What is Base Station?

A base station represents an access point for a wireless.

A base station plays a pivotal role in the realm of telecommunications, acting as the cornerstone of connectivity. It enables seamless communication by linking various wireless devices to broader networks, ensuring that data flows efficiently from one point to another. A base station is an integral.

In the context of external land surveying, a base station is a GPS receiver at an accurately-known fixed location which is used to derive correction information for nearby portable GPS receivers. This correction data allows propagation and other effects to be corrected out of the position data.

Often hidden in plain sight on rooftops or towers, base stations are the backbone of modern mobile networks. What Is a Base Station?

A base station is a fixed point of communication between mobile devices and the wider telecom network. It transmits and receives radio signals, enabling your



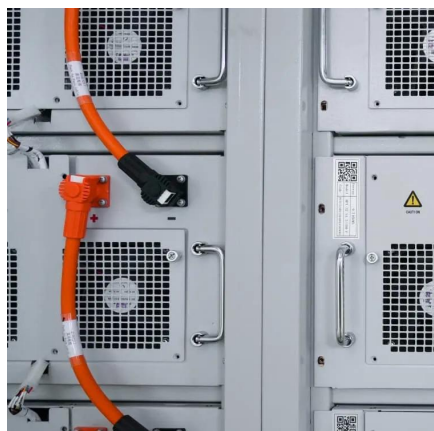
phone to.

A base station is a critical component of wireless communication networks. It serves as the central point of a network that connects various devices, such as smartphones, tablets, and computers. The base station transmits and receives signals, ensuring seamless communication over radio frequencies.

A base station is a fixed transceiver that serves as the central communication point for mobile devices within a defined geographical area, known as a cell. It is sometimes called a cell tower. Its function is to transmit and receive radio signals to and from wireless client devices. The base.



What is the purpose of base station communication equipment



[Base Station's Role in Wireless Communication Networks](#)

A base station is fundamental in wireless communication, because it facilitates the connection between your device and the wider network. Without base stations, mobile data and voice ...

[Request Quote](#)

Base Stations

Base stations form a key part of modern wireless communication networks because they offer some crucial advantages, such as wide coverage, continuous communications and ...

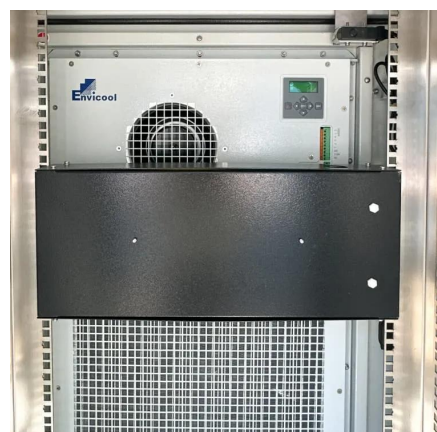
[Request Quote](#)



Understanding Base Stations: The Backbone of Wireless Communication

A base station is a fixed communication infrastructure that connects mobile devices (such as smartphones, tablets, or IoT devices) to a network, enabling wireless communication.

[Request Quote](#)



[What Is Base Station In Wireless Communication?](#)

In wireless communication, a base station is a critical component that enables wireless communication between devices. It serves as a central point of connection for ...



[Request Quote](#)



Base station

In the area of wireless computer networking, a base station is a radio receiver/transmitter that serves as the hub of the local wireless network, and may also be the gateway between a wired ...

[Request Quote](#)



What is a base station?

In telecommunications, a base station is a fixed transceiver that is the main communication point for one or more wireless mobile client devices. A base station serves as ...

[Request Quote](#)



[What Does a Base Station Do and Why Is It Essential for ...](#)

A base station is a fixed point of communication between mobile devices and the wider telecom network. It transmits and receives radio signals, enabling your phone to access ...

[Request Quote](#)



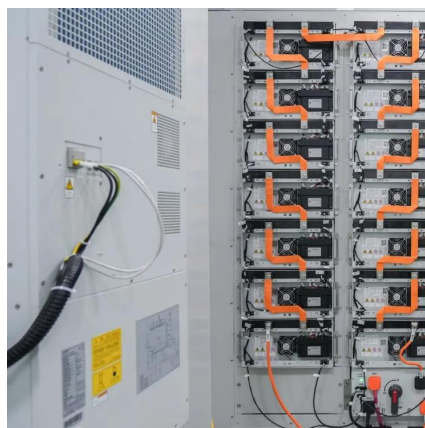
What Is the Role of a Base Station in



Wireless Communication?

Base stations are critical components in wireless communication networks, serving as the intermediary between mobile devices and the core network. They play a vital role in ...

[Request Quote](#)



What Is A Base Station?

A base station is a piece of equipment that facilitates wireless communication between devices and a network. It contains the necessary hardware and software to transmit ...

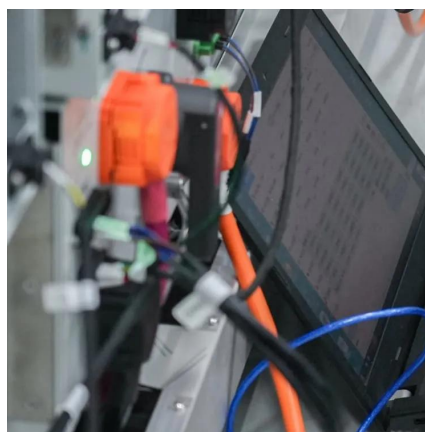
[Request Quote](#)

Base station

OverviewComputer networkingLand surveyingWireless communicationsSee also

In the area of wireless computer networking, a base station is a radio receiver/transmitter that serves as the hub of the local wireless network, and may also be the gateway between a wired network and the wireless network. It typically consists of a low-power transmitter and wireless router.

[Request Quote](#)



[What Is a Base Station? Definition and How It Works](#)

Its function is to transmit and receive radio signals to and from wireless client devices. The base station acts as a converter, taking radio waves from a mobile phone and ...

[Request Quote](#)



Contact Us

For catalog requests, pricing, or partnerships, please visit:

<https://www.energyinnovationday.pl>

Phone: +48 22 335 1273

Email: info@energyinnovationday.pl

Scan the QR code to contact us via WhatsApp.

