



What is the power supply situation of the Pretoria base station





Overview

Large parts of Pretoria were left without power after a failure at the Scientia Primary Substation impacted the supply at seven other substations. Metro spokesperson Lindela Mashigo said the power was expected to be restored by 18:00 on Friday.

Large parts of Pretoria were left without power after a failure at the Scientia Primary Substation impacted the supply at seven other substations. Metro spokesperson Lindela Mashigo said the power was expected to be restored by 18:00 on Friday.

Track, record, and stay informed about power outages in Gauteng with our dedicated platform. Access detailed and up-to-date information on electricity outages throughout the area. Power outages in Gauteng can happen for a variety of reasons, from routine maintenance to unexpected emergencies. Our.

South African environmentalists and rights advocates are stalling moves by the government to award a lengthy emergency power supply contract to a local subsidiary of a Turkish gas-to-electricity firm, citing grave environmental and economic concerns. At a time when South Africa is expected to honor.

South Africa's power utility Eskom has announced controlled outages, cutting 3,000 megawatts of electricity from the grid due to what it called a 'temporary setback.' The measure, known as load shedding, follows similar cuts in January after nearly 10 months of uninterrupted power. Eskom said it.

For over a century, Eskom has held a monopoly on electricity supply in South Africa. However, the severe blackouts, that have notably escalated to historical highs during President Cyril Ramaphosa's term in office, has prompted various South African municipalities to explore alternative power.

Seven substations were affected by a failure at a primary substation, leaving large parts of Pretoria east and the Moot without power. The metro says the power is expected to be back on by 18:00 today. Image for illustration. The Pyramid substation was recently renovated. Photo: Archive Large parts.

Tshwane outlines plans to revive decommissioned power stations - SABC News -



Breaking news, special reports, world, business, sport coverage of all South African current events. Africa's news leader. The Rooiwal Power Station in Tshwane. After being redundant for over a decade, the Rooiwal and. Why is Pretoria negotiating a 20-year power supply agreement with Karpowership?

At a time when South Africa is expected to honor its climate commitments and rapidly shift away from fossil fuels, Pretoria is currently negotiating a 20-year power supply agreement with Karpowership South Africa, a local subsidiary of the Turkish power generation company Karpowership.

What happened to Pretoria West power station?

The Pretoria West Power station suffered the same reality, despite the need for additional power supply in the country. Tshwane MMC for utilities, Themba Fosi, says they want to cut off their over-reliance on Eskom by 50%. Fosi has also assured current employees of the city that their jobs are safe.

Who owns Pretoria West power station?

Unit-level coordinates (WGS 84): This ownership tree is part of the Global Energy Ownership Tracker, a project of Global Energy Monitor. Pretoria West power station is a coal-fired power plant with a total capacity of 180 MW. The plant was built in 1952, and is owned by Tshwane Electricity Division.

Why was Pretoria left without power?

Large parts of Pretoria were left without power after a failure at the Scientia Primary Substation impacted the supply at seven other substations. Metro spokesperson Lindela Mashigo said the power was expected to be restored by 18:00 on Friday.



What is the power supply situation of the Pretoria base station



[Power network repair to affect supply in Pretoria CBD, West](#)

The Tshwane metro is planning to upgrade the Princess Park 132kV Substation on March 4, which will cause power supply interruption to parts of Pretoria Central and West.

[Request Quote](#)

ENERGY ACTION PLAN

Announced by President Cyril Ramaphosa in July 2022, it outlines a bold set of actions aimed at fixing Eskom and adding as much new generation capacity as possible, as quickly as possible, ...

[Request Quote](#)



Parts of Pretoria to regain power by late afternoon, says metro

Large parts of Pretoria were left without power after a failure at the Scientia Primary Substation impacted the supply at seven other substations. Metro spokesperson ...

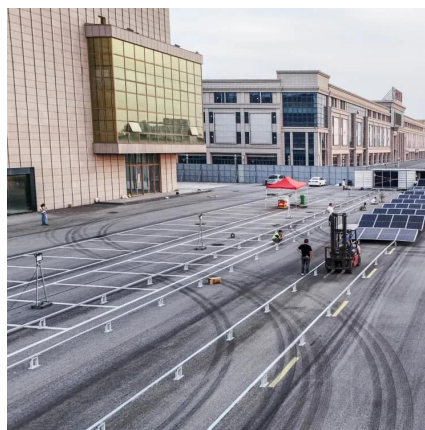
[Request Quote](#)



[Parts of Pretoria to regain power by late afternoon, ...](#)

Large parts of Pretoria were left without power after a failure at the Scientia Primary Substation impacted the supply at seven other ...

[Request Quote](#)



South Africa: Pretoria is pivoting back to energy realism with

Despite the potential operational lifespan extension, the city spent around R130m per year for a decade to keep the power plant idle. The power station was shut down around ...

[Request Quote](#)



Gauteng Power Outages Map

Check out the current power outage schedule for Gauteng (South Africa), featuring detailed timings and updates to help you stay informed and ...

[Request Quote](#)



[The electricity crisis rocking South Africa](#)

At a time when South Africa is expected to honor its climate commitments and rapidly shift away from fossil fuels, Pretoria is currently negotiating a 20-year power supply ...

[Request Quote](#)



Tshwane outlines plans to revive



decommissioned power stations

After being redundant for over a decade, the Rooiwal and Pretoria West Power Stations in the City of Tshwane might return to life. The City has confirmed that plans to revive ...

[Request Quote](#)



[Pretoria is pivoting back to energy realism with King Coal](#)

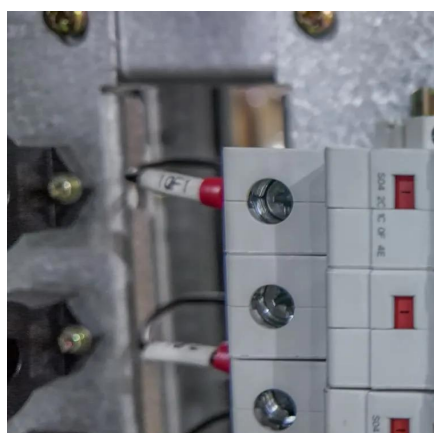
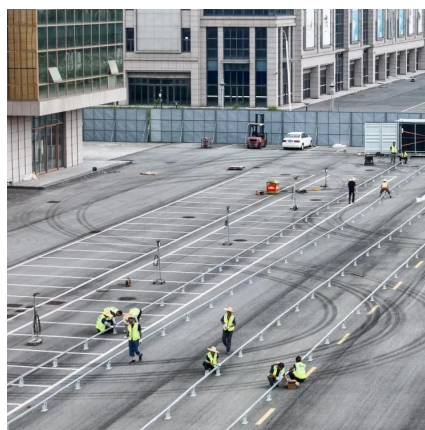
Despite the potential operational lifespan extension, the city spent around R130 million per year for a decade to keep the power plant idle. The power station was shut down ...

[Request Quote](#)

Gauteng Power Outages Map

Check out the current power outage schedule for Gauteng (South Africa), featuring detailed timings and updates to help you stay informed and ready for any disruptions.

[Request Quote](#)



[South Africa faces severe power cuts . Africanews](#)

In the early hours of Sunday, Eskom escalated the cuts to stage 6 after multiple failures at power stations. They described the move as 'essential' to replenish emergency ...

[Request Quote](#)

[South Africa faces severe power cuts .](#)



[Africanews](#)

In the early hours of Sunday, Eskom escalated the cuts to stage 6 after multiple failures at power stations. They described the move ...

[Request Quote](#)



Pretoria West power station

However, the mayor of Tshwane reportedly said that Pretoria West power station's infrastructure was in "poor condition" and would be difficult to include in a power generation plan.

[Request Quote](#)



Contact Us

For catalog requests, pricing, or partnerships, please visit:

<https://www.energyinnovationday.pl>

Phone: +48 22 335 1273

Email: info@energyinnovationday.pl

Scan the QR code to contact us via WhatsApp.

