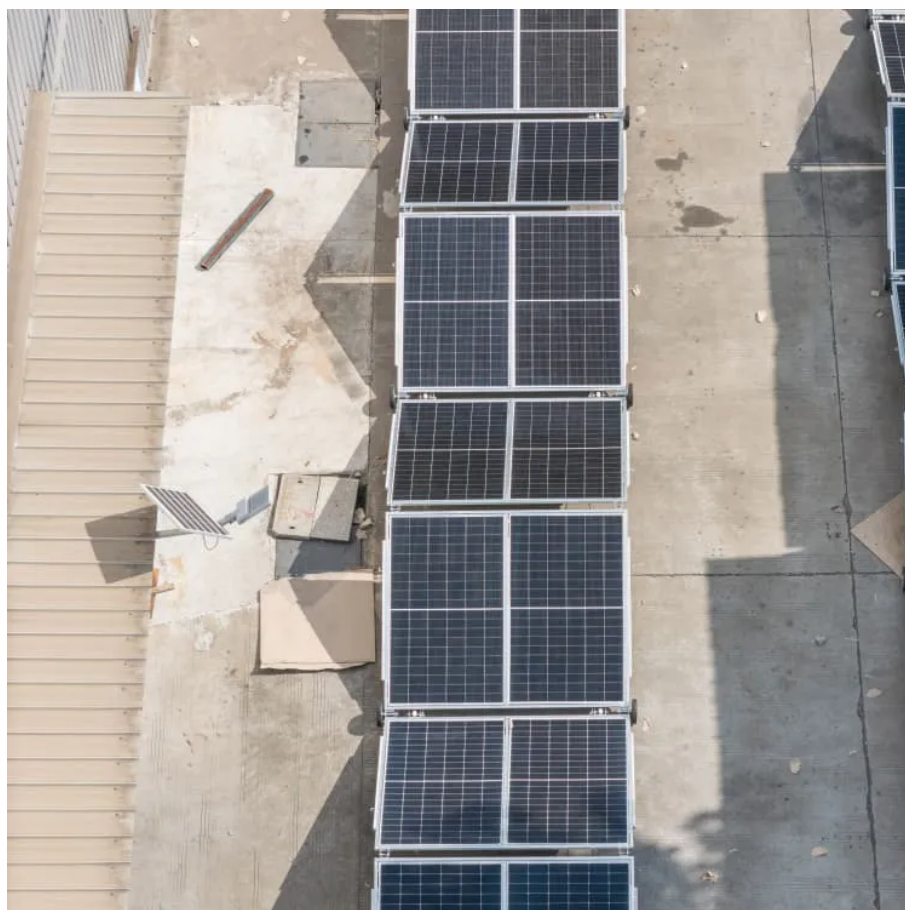




What is the power source of the signal base station





Overview

A is a network of handheld (cell phones) in which each phone communicates with the by through a local antenna at a cellular base station (cell site). The coverage area in which service is provided is divided into a mosaic of small geographical areas called "cells", each served by a separate low power multichannel and antenna at a base station. All the cell phones within a cell communicate with the system thr.

Power Supply: The power source provides the electrical energy to base station elements. It often features auxiliary power supply mechanisms that guarantee operation in case of lost or interrupted electricity, during blackouts.

Power Supply: The power source provides the electrical energy to base station elements. It often features auxiliary power supply mechanisms that guarantee operation in case of lost or interrupted electricity, during blackouts.

What is Base Station?

What is Base Station?

A base station represents an access point for a wireless device to communicate within its coverage area. It usually connects the device to other networks or devices through a dedicated high bandwidth wire or fiber optic connection. Base stations typically.

A cell site, cell phone tower, cell base tower, or cellular base station is a cellular-enabled mobile device site where antennas and electronic communications equipment are placed (typically on a radio mast, tower, or other raised structure) to create a cell, or adjacent cells, in a cellular.

Cellular communications have come a long way since the introduction of analog cellular networks in the early '80s. Today, as the market migrates from 4G to 5G network solutions, the cellular communications industry is laying the groundwork for a giant leap forward in data transfer speed, lower.

Outdoor base stations integrate all essential systems into a single Integrated Cabinet, designed to endure harsh conditions like direct sunlight, rain, and extreme temperatures. These units protect the equipment while ensuring efficient functionality. Towers are crucial for mounting antennas at.



Base stations are required to enable mobile phone communication, including calls and data transfer. They consist of different electronic components and antennas and can be located on masts, on rooftops, or on the outside or inside of buildings. Base stations emit radiofrequency electromagnetic.

Simply put, a base station (BS) is a wireless transceiver device in a mobile communication network that provides wireless coverage and communicates with mobile terminals like your phone. It acts as a bridge, connecting your phone to a vast communication network to ensure smooth information flow.



What is the power source of the signal base station



[Complete Guide to 5G Base Station Construction](#)

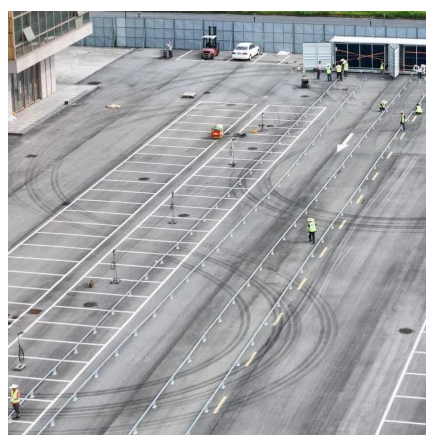
Explore how 5G base stations are built--from site planning and cabinet installation to power systems and cooling solutions. Learn the ...

[Request Quote](#)

What Is A Base Station?

Power supply: The base station requires a power supply to operate. It may be connected to the electrical grid or have a backup ...

[Request Quote](#)



Power Automate

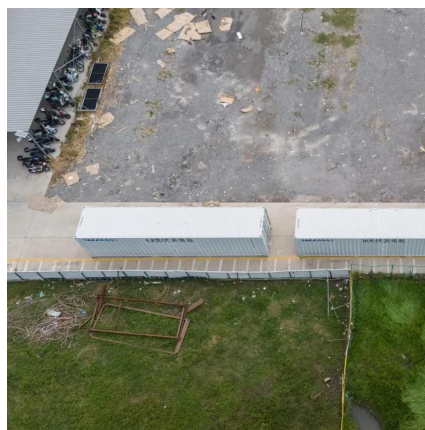
I have created a Flow in Power automate, have used a Refresh a Power BI dataset component, there is no issue in terms of functionality as such and I am able to refresh ...

[Request Quote](#)

powerbi

In Power Automate, within the Power BI connector, you'll find the "Run a query against a dataset" action. Take note: this can only return one table at a time with max of 1,000 ...

[Request Quote](#)



Cell site

Summary
Overview
Operation
Temporary sites
Employment
Spy agency setup
Off-grid systems
Camouflage

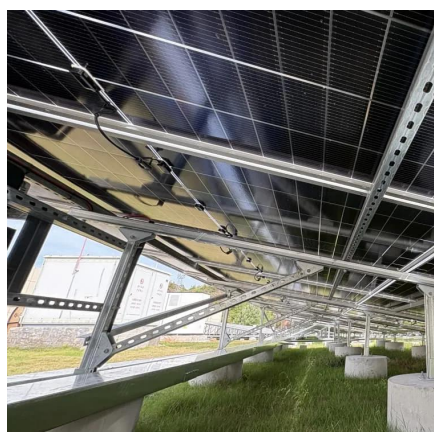
A cellular network is a network of handheld mobile phones (cell phones) in which each phone communicates with the telephone network by radio waves through a local antenna at a cellular base station (cell site). The coverage area in which service is provided is divided into a mosaic of small geographical areas called "cells", each served by a separate low power multichannel transceiver and antenna at a base station. All the cell phones within a cell communicate with the system thr...

[Request Quote](#)



[What Is a Base Station? Exploring the Core of 5G ...](#)

According to the law of conservation of energy, most of the electrical energy is converted into



powerbi

I have a table PRODUCTS in Power BI that has a column named Product_Group. When I go to transform data I can see all the Product groups. (DirectQuery connection, it is ...

[Request Quote](#)



thermal energy, which is the primary ...

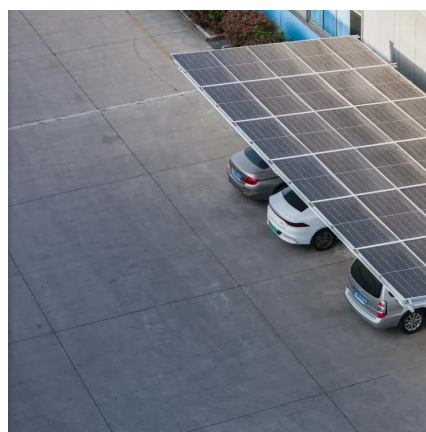
[Request Quote](#)



[How to solve the network error when using a patch function?](#)

Below are some of the reasons you get the network error when using a patch function in Microsoft Power Apps applications: One of the columns in your SharePoint list is ...

[Request Quote](#)



Base Stations

Power Supply: The power source provides the electrical energy to base station elements. It often features auxiliary power supply ...

[Request Quote](#)



[Selecting the Right Supplies for Powering 5G Base Stations](#)

Consequently, a company like ADI, which specializes in all aspects of the base station RF chain and has thorough knowledge of power management tools required for powering these ...

[Request Quote](#)



[Extract Value from Array in Power](#)



[Automate](#)

Extract Value from Array in Power Automate Asked 1 year, 2 months ago Modified 9 months ago Viewed 6k times

[Request Quote](#)

[Running Python scripts in Microsoft Power Automate Cloud](#)

I use Power Automate to collect responses from a Form and send emails based on the responses. The main objective is to automate decision-making using Python to approve or ...

[Request Quote](#)



How do I refresh an Excel Power Query using Power Automate ...

0 I have data being pulled from a SharePoint list to an Excel file and I'm trying to use Power Automate online to create a scheduled flow that will trigger the "Refresh All" button ...

[Request Quote](#)

What Is a Base Station? Exploring the Core of 5G Networks and ...

According to the law of conservation of energy, most of the electrical energy is converted into thermal energy, which is the primary source of heat in a base station. If this ...

[Request Quote](#)



ICNIRP , Base Stations



Base stations are required to enable mobile phone communication, including calls and data transfer. They consist of different electronic components and antennas and can be located on ...

[Request Quote](#)

Complete Guide to 5G Base Station Construction , Key Steps, ...

Explore how 5G base stations are built--from site planning and cabinet installation to power systems and cooling solutions. Learn the essential components, technologies, and ...

[Request Quote](#)



Selecting the Right Supplies for Powering 5G Base Stations

Consequently, a company like ADI, which specializes in all aspects of the base station RF chain and has thorough knowledge of power management tools required for powering these ...

[Request Quote](#)

power automate

I am writing a Power automate to copy emails from an Outlook mailbox to SharePoint. I am using Get emails (V3) and want to retrieve emails received on a particular date.

[Request Quote](#)



Data Source Credentials and



Scheduled Refresh greyed out in ...

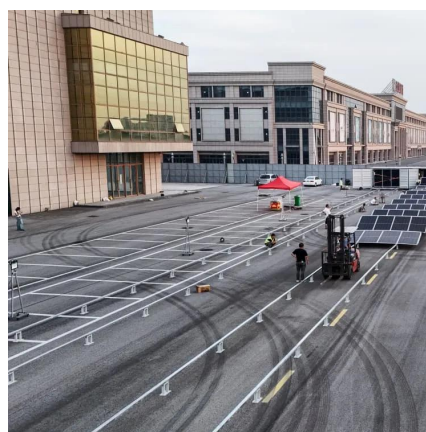
Data Source Credentials and Scheduled Refresh greyed out in Power BI Service Asked 4 years, 8 months ago Modified 3 years, 4 months ago Viewed 18k times

[Request Quote](#)

[Understanding Base Stations: The Backbone of Wireless ...](#)

Power Supply: Base stations require a stable and reliable power supply to operate. Many base stations have backup power sources like batteries or generators to ensure ...

[Request Quote](#)



Cell site

The coverage area in which service is provided is divided into a mosaic of small geographical areas called "cells", each served by a separate low power multichannel transceiver and ...

[Request Quote](#)

Power Base Station

Maximum base station power is limited to 24 dBm output power for Local Area base stations and to 20 dBm for Home base stations, counting the power over all antennas (up to four).

[Request Quote](#)



What Is A Base Station?



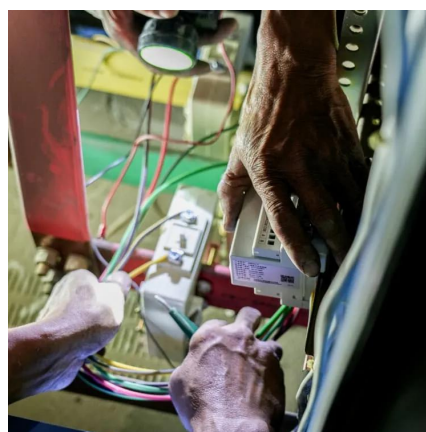
Power supply: The base station requires a power supply to operate. It may be connected to the electrical grid or have a backup power source like batteries or generators in ...

[Request Quote](#)

Base Stations

Power Supply: The power source provides the electrical energy to base station elements. It often features auxiliary power supply mechanisms that guarantee operation in ...

[Request Quote](#)



How to use Power Automate flows to manage user access to ...

Send an HTTP request to SharePoint action in Power automate flows works with SharePoint REST APIs. Follow below Microsoft official documentations for SharePoint REST ...

[Request Quote](#)

What is a Base Station?

The feeder is connected from the source (such as a microcell base station or a repeater), and then sent to each room or channel, and then the antenna is used to send out ...

[Request Quote](#)



What is a Base Station?



The feeder is connected from the source (such as a microcell base station or a repeater), and then sent to each room or channel, and ...

[Request Quote](#)



Contact Us

For catalog requests, pricing, or partnerships, please visit:

<https://www.energyinnovationday.pl>

Phone: +48 22 335 1273

Email: info@energyinnovationday.pl

Scan the QR code to contact us via WhatsApp.

