



# What is the normal voltage of Luanda solar container lithium battery pack





## Overview

---

How do I choose a lithium-ion battery pack?

When selecting a lithium-ion battery pack, understanding its voltage characteristics is crucial for ensuring optimal performance and longevity. Three key voltage terms define a battery's operation: Nominal Voltage, Charged Voltage, and Cut-Off Voltage.

What is a safe voltage for a lithium ion battery?

Lithium-ion batteries function within a certain range at which their voltage operates optimally and safely. The highest range where the fully charged voltage of a lithium-ion battery is approximately 4.2V per cell. The lowest range which is the minimum safe voltage for lithium-ion batteries is approximately 3.0V per cell.

What is the SOC voltage chart for lithium batteries?

The SoC voltage chart for lithium batteries shows the voltage values with respect to SoC percentage. A Li-ion cell when fully charged at 100%SoC can have nearly 4.2V. As it starts to discharge itself, the voltage decreases, and the voltage remains to be 3.7V when the battery is at half charge, ie, 50%SoC.

What is a standard lithium ion/lithium polymer (LiPo) battery discharge curve?

The following Figure 1 is a standard lithium-ion/lithium polymer (LiPo) battery discharge curve. Its nominal voltage is 3.6V or 3.7V, the fully charged voltage is 4.2V, and the discharge cut-off voltage is 3V. You see, from 4.0V to 3.6V, the voltage does not change much, but the power may drop from 80% to about 20%.



## What is the normal voltage of Luanda solar container lithium battery



### Lithium-Ion Battery Voltage Chart

Understanding lithium-ion battery voltage is essential for safe usage, maximizing performance, and prolonging battery life. A fully charged cell reads around 4.2V, while a dead ...

[Request Quote](#)

### LUANDA NCM LITHIUM BATTERY PACKS POWERING ...

Under normal conditions, it takes about 15 days for Li/SOCI2 battery, Li-MnO2 battery, flexible-pack batteries and lithium-polymer batteries to be customized, while the typical battery pack ...

[Request Quote](#)



### Heart rate: What's normal?

A normal resting heart rate for adults ranges from 60 to 100 beats per minute. A heart rate above or below that may signal a health condition.

[Request Quote](#)

### Prediabetes

Treatment Healthy lifestyle choices can help you bring your blood sugar level back to normal, or at least keep it from rising toward the levels seen in type 2 diabetes. To prevent ...

[Request Quote](#)



## [LiFePO4 Battery Pack: 2025 Technical Parameters Guide](#)

The operating voltage range is the safe voltage window for a LiFePO4 battery pack, from 2.5V (fully discharged) to 3.65V (fully charged). Staying within this range (10V-14.6V for a 12.8V ...

[Request Quote](#)



## [LUANDA NCM LITHIUM BATTERY PACKS POWERING ANGOLA S](#)

Under normal conditions, it takes about 15 days for Li/SOCI2 battery, Li-MnO2 battery, flexible-pack batteries and lithium-polymer batteries to be customized, while the typical battery pack ...

[Request Quote](#)



## [Menstrual cycle: What's normal, what's not](#)

Learn about how to track your menstrual cycles and what any changes may mean.

[Request Quote](#)



## **Complete blood count (CBC)**



Overview A complete blood count (CBC) is a blood test. It's used to look at overall health and find a wide range of conditions, including anemia, infection and leukemia. A ...

[Request Quote](#)



### [The Complete Guide to Lithium-Ion Battery Voltage Charts](#)

The ideal voltage for a lithium-ion battery depends on its state of charge and specific chemistry. For a typical lithium-ion cell, the ideal voltage when fully charged is about ...

[Request Quote](#)



### [Blood pressure chart: What your reading means](#)

Ideal blood pressure is categorized as normal. Increased blood pressure may be categorized as elevated, stage 1 or stage 2 depending on the specific numbers. A diagnosis of ...

[Request Quote](#)



### **Lithium-Ion Battery Voltage Breakdown: 12V, 24V, 48V Explained**

Understanding its voltage levels helps maintain efficiency and longevity. The chart below displays the typical voltage readings at different charge percentages. A 48V lithium-ion ...

[Request Quote](#)



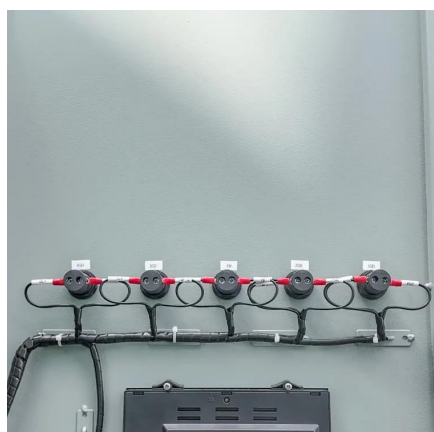
### [Lithium Ion Battery Voltage Explained:](#)



## [Everything ...](#)

In the discharge cycle, initially, the voltage will be 4.2V. When we continue to utilize the battery, the voltage may drop to the nominal ...

[Request Quote](#)



## **Lithium Battery Voltage Chart**

It is recommended to maintain the battery within the voltage range of 3.0V to 4.2V per cell to ensure optimal performance and avoid ...

[Request Quote](#)

## [Complete Guide to Lithium-Ion Battery Voltage Chart](#)

Minimum safe voltage (cut-off voltage / LVC): This is the lowest warning line that the battery can be safely ...

[Request Quote](#)



## **Battery Voltage Explained: Nominal, Charged, Minimum, and Cut ...**

Nominal voltage is roughly the average voltage at which a battery operates under normal conditions. It represents a balance between the battery being fully charged and fully ...

[Request Quote](#)

## [Mayo Clinic corrected QT interval \(QTc\)](#)



## [calculator](#)

Worried about QT interval prolongation? This online evidence based resource will help guide you how to measure the QT interval and calculate the QTc value with an easy to use calculator ...

[Request Quote](#)



## Lithium Battery Voltage Chart

It is recommended to maintain the battery within the voltage range of 3.0V to 4.2V per cell to ensure optimal performance and avoid permanent damage to the cells. Lithium ...

[Request Quote](#)



## [The Complete Guide to Lithium-Ion Battery Voltage ...](#)

The ideal voltage for a lithium-ion battery depends on its state of charge and specific chemistry. For a typical lithium-ion cell, the ideal ...

[Request Quote](#)



## Creatinine test

Overview A creatinine test is a measure of how well the kidneys are doing their job of filtering waste from the blood. Creatinine is a chemical compound left over from energy ...

[Request Quote](#)

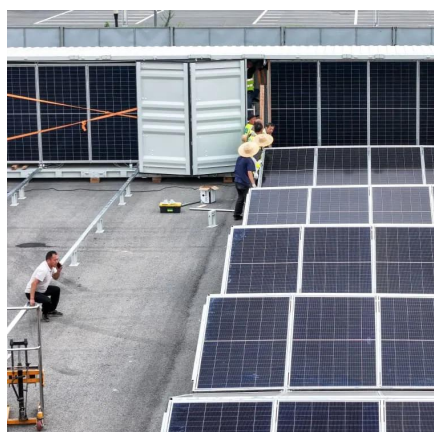
## [Complete Guide to Lithium-Ion Battery](#)



## [Voltage Chart](#)

Minimum safe voltage (cut-off voltage / LVC): This is the lowest warning line that the battery can be safely discharged to. For example, it may be 3.0V or 2.8V (different ...

[Request Quote](#)



## [Lithium-Ion Battery Voltage Breakdown: 12V, 24V, ...](#)

Understanding its voltage levels helps maintain efficiency and longevity. The chart below displays the typical voltage readings at ...

[Request Quote](#)

## **Lithium-Ion Battery Voltage Chart**

Understanding lithium-ion battery voltage is essential for safe usage, maximizing performance, and prolonging battery life. A fully ...

[Request Quote](#)



## **Diabetes**

These include skipping a meal and getting more physical activity than normal. Low blood sugar also occurs if you take too much insulin or too much of a glucose-lowering ...

[Request Quote](#)

## **Lithium Battery Voltage Chart Guide**



Learn how to read a lithium battery voltage chart, including LiFePO4, 12V, 24V, and 48V systems. Simple explanations, real examples, and SOC insights.

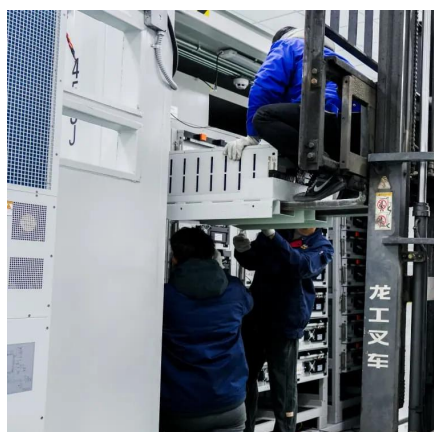
[Request Quote](#)



## Lithium Ion Battery Voltage Explained: Everything You Need to ...

In the discharge cycle, initially, the voltage will be 4.2V. When we continue to utilize the battery, the voltage may drop to the nominal rate of 3.7V. When used more, the ...

[Request Quote](#)



## Mayo Ad 2/04

The new normal range an hour. Therefore, even a 10 for blood pressure recommended by cigarette per day habit elevates your the American Heart Association is blood pressure for ...

[Request Quote](#)



## [Aspartate aminotransferase \(AST\) blood test](#)

Overview An aspartate aminotransferase test, also called an AST test, is a blood test. It's commonly used to check the health of the liver. AST is a substance found mostly in ...

[Request Quote](#)





## Contact Us

---

For catalog requests, pricing, or partnerships, please visit:

<https://www.energyinnovationday.pl>

Phone: +48 22 335 1273

Email: [info@energyinnovationday.pl](mailto:info@energyinnovationday.pl)

Scan the QR code to contact us via WhatsApp.

