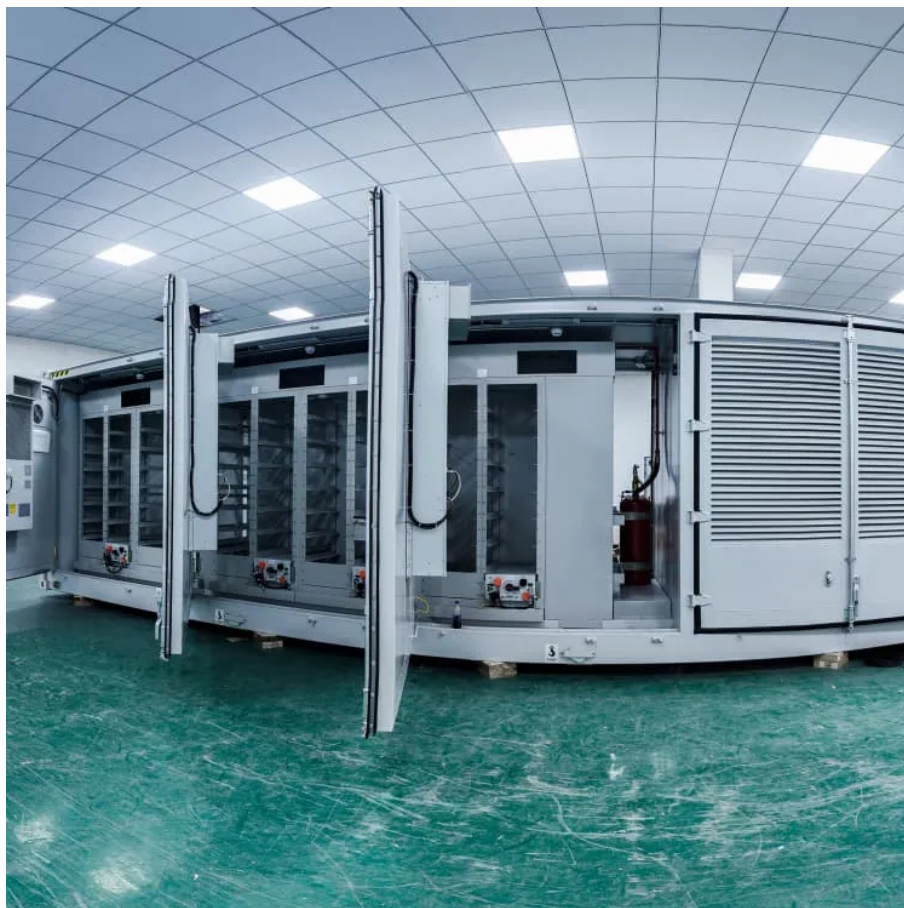




What is the normal temperature of outdoor base station





Overview

By consulting the reference guide, we find that the cooling season outdoor design temperature limit is 98 F and the heating season outdoor design temperature limit is 30 F.

By consulting the reference guide, we find that the cooling season outdoor design temperature limit is 98 F and the heating season outdoor design temperature limit is 30 F.

Outdoor summer and winter design temperatures and relative humidity for U.S. states and cities. The table below indicates the summer and winter design conditions in U.S. states and cities. For full table with Summer Conditions - rotate the screen! 7:30 am. 7:30 am. Design of Air Conditioning systems.

Unattended base stations require an intelligent cooling system because of the strain they are exposed to. The sensitive telecom equipment is operating 24/7 with continuous load that generates heat. Cooling systems must protect critical telecommunication cabinets, energy storage systems and back-up.

As communication systems are gradually transferred to 5G, communication base station (CBS) is developing toward large capacity, high power density, and high integration. The system's heat dissipation is getting larger while its size is turning to be smaller. In this case, thermal reliability has.

Loading. Stations in the 2001, 2005, 2009, 2013, 2017, 2021, and 2025 edition of the ASHRAE Handbook of Fundamentals.

One requirement of the ENERGY STAR Certified Homes program is to use outdoor design temperatures that do not exceed the maximum cooling season temperature and minimum heating season temperature listed in this reference guide for the state and county, or territory, in which the home is to be.

From the past design habits, the base station is a typical enclosed natural heat dissipation device (outdoor applications require strict waterproof and dustproof). After the heat is emitted from the components, there are only two places: 1. Absorbed by internal devices-heat is converted into. What is the cooling season outdoor design temperature limit?



By consulting the reference guide, we find that the cooling season outdoor design temperature limit is 99 F and the heating season outdoor design temperature limit is 28 F. This means that the designer must: Not use the cooling sizing limit for a Condition B Climate because the HDD/CDD Ratio is 0.3, which is < 2.0 .

What are the design temperatures used in this reference guide?

The temperatures in this reference guide utilize the 1% cooling and 99% heating design temperatures in the ASHRAE 2013 Handbook of Fundamentals and Manual J Design Conditions 8th Edition. Individual counties were assigned the design values in this document using the following logic: One weather station within the county.

What if the cooling design temperature limit was 80 °F?

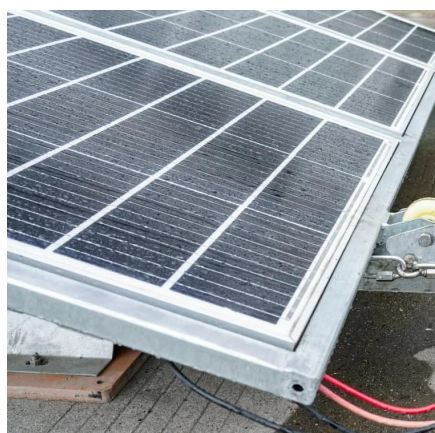
If the selected or averaged cooling design temperature limit for a county / territory was < 80 °F, then the county / territory was assigned a value of 80 °F, and the weather station (or stations) that would have been selected was marked with an asterisk.

How do I select a heating season outdoor design temperature?

Use a heating season outdoor design temperature equal to or greater than the 99% Heating Temperature. If a Condition B Climate will be used to select the cooling sizing limit, then utilize the corresponding HDD/CDD Ratio and document the value in Item 4.14.2 of the National HVAC Design Report. Example: A home will be certified in Travis County, TX.



What is the normal temperature of outdoor base station



[The cooling challenges of 5G base stations](#)

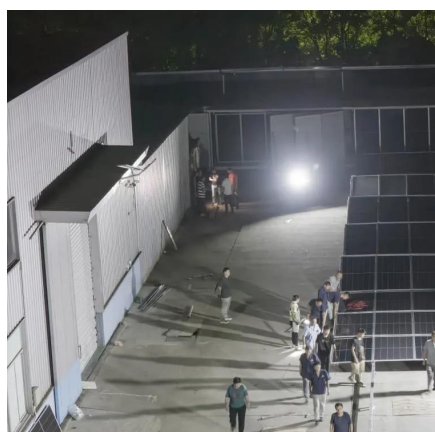
Reliability-base stations are used in complex outdoor environments, all over the world, with a temperature range of -40C~55C, ...

[Request Quote](#)

Blood urea nitrogen (BUN) test

Learn about the blood urea nitrogen (BUN) test to assess kidney function and what possible results could mean.

[Request Quote](#)



[Blood pressure chart: What your reading means](#)

Ideal blood pressure is categorized as normal. Increased blood pressure may be categorized as elevated, stage 1 or stage 2 depending on the specific numbers. A diagnosis of ...

[Request Quote](#)

Heart rate: What's normal?

A normal resting heart rate for adults ranges from 60 to 100 beats per minute. A heart rate above or below that may signal a health condition.

[Request Quote](#)



[Characterization of the thermal performance of an ...](#)

This work describes the analysis of the thermal performance of an outdoor telecommunication cabinet (OTC) using the computational tool ...

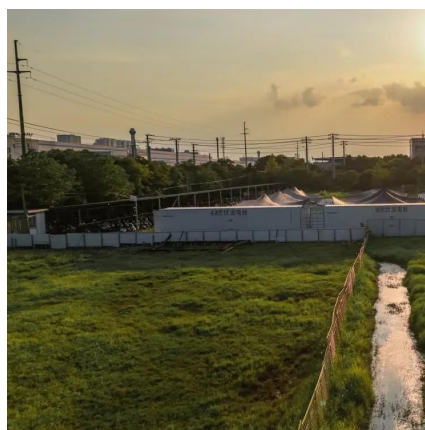
[Request Quote](#)



Thermal cooling methods for small cell base stations: myths vs.

Myth 1: Standard air conditioning is enough to cool small cell base stations. Reality: While traditional air conditioning might cool large telecom equipment, small cell base stations require ...

[Request Quote](#)



Complete blood count (CBC)

Overview A complete blood count (CBC) is a blood test. It's used to look at overall health and find a wide range of conditions, including anemia, infection and leukemia. A ...

[Request Quote](#)



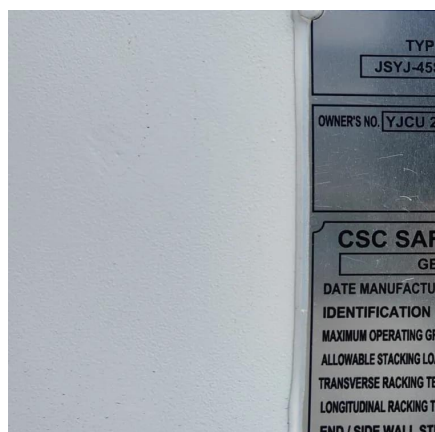
[Design Temperature Limit Reference](#)



[Guide \(2019 ...](#)

By consulting the reference guide, we find that the cooling season outdoor design temperature limit is 99 F and the heating season outdoor design temperature limit is 28 F.

[Request Quote](#)



Creatinine test

Overview A creatinine test is a measure of how well the kidneys are doing their job of filtering waste from the blood. Creatinine is a chemical compound left over from energy ...

[Request Quote](#)

[Aspartate aminotransferase \(AST\) blood test](#)

Overview An aspartate aminotransferase test, also called an AST test, is a blood test. It's commonly used to check the health of the liver. AST is a substance found mostly in ...

[Request Quote](#)



[Outdoor Temperatures and Relative Humidity](#)

Outdoor summer and winter design temperatures and relative humidity for U.S. states and cities. The table below indicates the summer and winter design conditions in U.S. states and cities.

[Request Quote](#)

Microsoft Word



GR-487 is based on the foundation that the thermal management system must properly maintain equipment with an outdoor ambient temperature range between -40 and +46°C. This ...

[Request Quote](#)



[Ejection fraction: An important heart test](#)

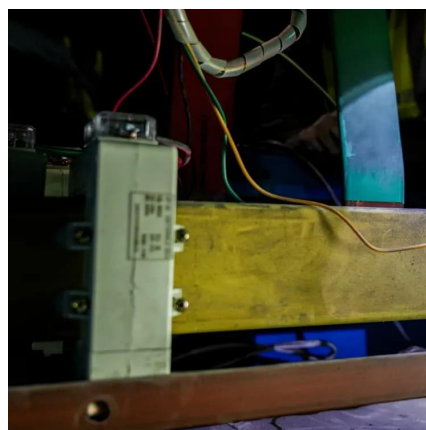
Ejection fraction is a measurement of the percentage of blood leaving the heart each time it squeezes. When the heart squeezes, it's called a contraction. Ejection fraction is ...

[Request Quote](#)

ASHRAE Climatic Design Conditions

Stations in the 2001, 2005, 2009, 2013, 2017, 2021, and 2025 edition of the ASHRAE Handbook of Fundamentals.

[Request Quote](#)



Diabetes

These include skipping a meal and getting more physical activity than normal. Low blood sugar also occurs if you take too much insulin or too much of a glucose-lowering ...

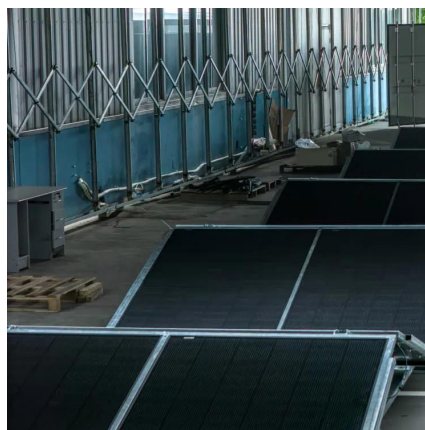
[Request Quote](#)

Mayo Ad 2/04



The new normal range an hour. Therefore, even a 10 for blood pressure recommended by cigarette per day habit elevates your the American Heart Association is blood pressure for ...

[Request Quote](#)



[Characterization of the thermal performance of an outdoor](#)

This work describes the analysis of the thermal performance of an outdoor telecommunication cabinet (OTC) using the computational tool DesignBuilder.

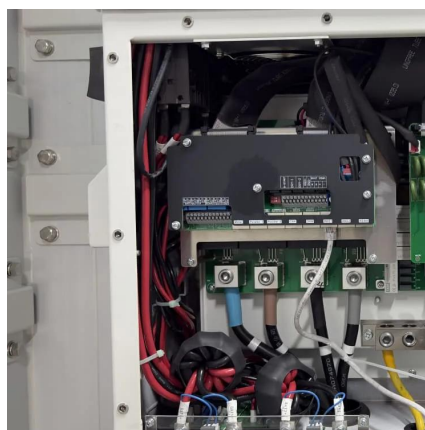
[Request Quote](#)



[Cooling for Mobile Base Stations and Cell Towers](#)

Unattended base stations require an intelligent cooling system because of the strain they are exposed to. The sensitive telecom equipment is operating 24/7 with continuous load that ...

[Request Quote](#)



[The cooling challenges of 5G base stations](#)

Reliability-base stations are used in complex outdoor environments, all over the world, with a temperature range of -40C~55C, difficult to maintain after failure-excellent ...

[Request Quote](#)

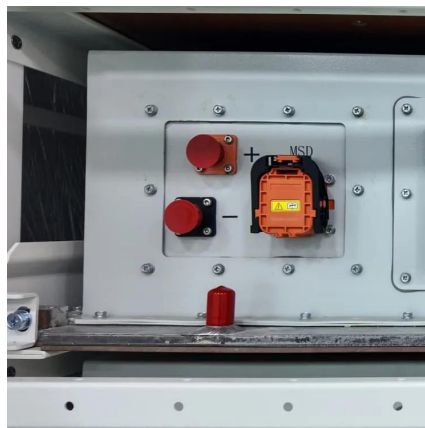


Ferritin test



Overview A ferritin test measures the amount of ferritin in the blood. Ferritin is a blood protein that contains iron. This test can be used to find out how much iron the body ...

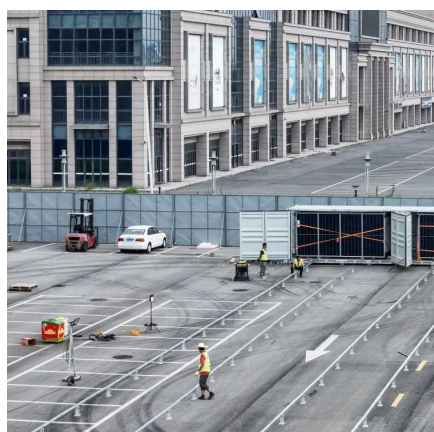
[Request Quote](#)



[ENERGY STAR Certified Homes County-Level Design ...](#)

By consulting the reference guide, we find that the cooling season outdoor design temperature limit is 98 F and the heating season outdoor design temperature limit is 30 F.

[Request Quote](#)



[Thermal Design for the Passive Cooling System of Radio ...](#)

The studied case is a radio base station (RBS) of high power density. Operating in outdoor scenarios, RBS requires unattended duty, maintenance-free, and long life-time. Compared ...

[Request Quote](#)





Contact Us

For catalog requests, pricing, or partnerships, please visit:

<https://www.energyinnovationday.pl>

Phone: +48 22 335 1273

Email: info@energyinnovationday.pl

Scan the QR code to contact us via WhatsApp.

