



What is the new power module for the base station





Overview

TOKYO, June 12, 2025 - Mitsubishi Electric Corporation (TOKYO: 6503) announced today that it has developed a world's first 1 compact 7GHz band gallium nitride (GaN) power amplifier module (PAM) with the world's highest 1 power efficiency, which is expected to enhance the ease of.

TOKYO, June 12, 2025 - Mitsubishi Electric Corporation (TOKYO: 6503) announced today that it has developed a world's first 1 compact 7GHz band gallium nitride (GaN) power amplifier module (PAM) with the world's highest 1 power efficiency, which is expected to enhance the ease of.

5G-Advanced base station and newly developed GaN power amplifier module (PAM) TOKYO, June 12, 2025 - Mitsubishi Electric Corporation (TOKYO: 6503) announced today that it has developed a world's first 1 compact 7GHz band gallium nitride (GaN) power amplifier module (PAM) with the world's highest 1.

5G-Advanced base station and newly developed GaN power amplifier module (PAM) TOKYO, June 12, 2025 - Mitsubishi Electric Corporation (TOKYO: 6503) announced today that it has developed a world's first 1 compact 7GHz band gallium nitride (GaN) power amplifier module (PAM) with the world's highest 1.

5G base stations have transformed network infrastructure by demanding significantly more power than their 4G predecessors. The table below highlights this dramatic increase: Operators now face several challenges: Higher RF power amplifiers and complex physical-layer processing increase energy.

Qorvo provides the world's leading base station manufacturers with a broad range of semiconductor and module technologies. Our product line includes gain block amplifiers, transmit linear amplifiers, GaN power amplifiers (PAs), low noise amplifiers (LNAs), digital step attenuators (DSAs), variable.

Tokyo-based Mitsubishi Electric Corp says that on 21 September it will begin shipping samples of a new gallium nitride (GaN) power amplifier module that can help to reduce power consumption in 5G massive multiple-input multiple-output (mMIMO) base stations. Providing high-speed, large-capacity.

A base station (or BTS, Base Transceiver Station) typically includes: Base station



energy storage refers to batteries and supporting hardware that power the BTS when grid power is unavailable or to smooth out intermittent renewable sources like solar. When evaluating a solution for your tower. What is a base module?

The base module is the main component that incorporates two modules and includes Ethernet, USB, COM, and connections for additional displays. It enhances the functionality of the DAS-3 unit.

How big is a 5g-advanced base station module?

The compact module measures only 12.0mm x 8.0mm (prototype) thanks to the high-density mounting of components, which will enhance the installation efficiency of 5G-Advanced base stations. Going forward, Mitsubishi Electric will continue research and development aimed at the practical application of the PAM in 5G-Advanced base stations.

What are the different types of Qorvo base stations?

NR - n40, n41, n78, n79. LTE- b40, b41, b42, b43 Qorvo provides base station manufacturers with a broad range of semiconductor and module technologies.



What is the new power module for the base station



Mitsubishi Electric to ship samples of GaN power amplifier module ...

Tokyo-based Mitsubishi Electric Corp says that on 21 September it will begin shipping samples of a new gallium nitride (GaN) power amplifier module that can help to ...

[Request Quote](#)

[5G Base Station Power Upgrade: Custom Rectifier Module ...](#)

Modern rectifier modules for 5G base stations offer integrated power supply solutions that streamline AC distribution and enable advanced remote monitoring. Operators ...

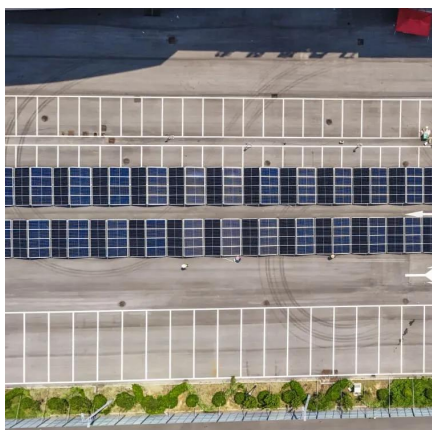
[Request Quote](#)



Kempower launches enhanced Station Charger - extends the ...

At the heart of this upgrade is the Kempower V2 power module, bringing the latest technological advancements of Kempower's next-generation charger platform to the ...

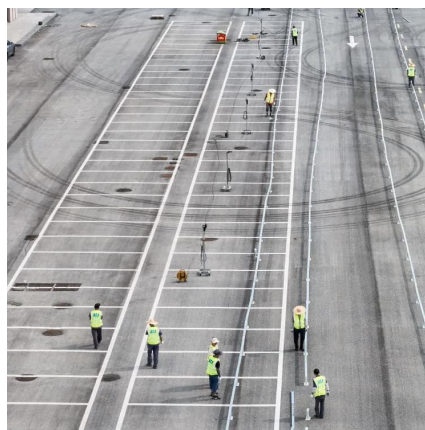
[Request Quote](#)



POWER FOR 5G NETWORKS

These power supplies incorporate a thermal baseplate and are capable of delivering full output power over a wide baseplate operating temperature range of -40 to 85 C.

[Request Quote](#)



Revolutionising Connectivity with Reliable Base Station Energy ...

Base station energy storage is the key to that reliability. Whether you're deploying in the mountains, deserts, or urban jungles, HighJoule provides intelligent, scalable, and ...

[Request Quote](#)



Wireless Base Station Solutions

Qorvo's RF components enhance wireless base stations with high-linearity, efficient signal routing, and 5G-ready performance.

[Request Quote](#)



Mitsubishi... , MITSUBISHI ELECTRIC US, Inc. Semiconductors ...

5G-Advanced base station and newly developed GaN power amplifier module (PAM)

[Request Quote](#)



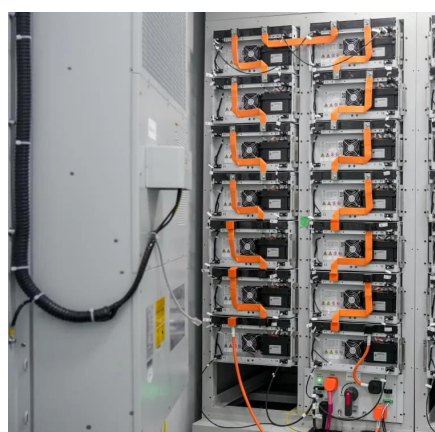
Power Supply Solutions for Wireless



Base Stations Applications

Luckily, MORNSUN has a series of power solutions designed to provide state-of-the-art reliability while also curbing any unnecessary costs related to their installation, application, and ...

[Request Quote](#)



[Trends and Innovations in Base Station Power Supply](#)

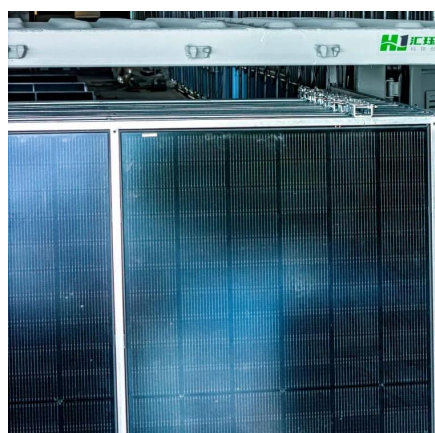
New power supplies for base stations are increasingly adopting AI and cloud technologies for real-time monitoring and predictive maintenance. These systems improve ...

[Request Quote](#)

[Kempower launches enhanced Station Charger - ...](#)

At the heart of this upgrade is the Kempower V2 power module, bringing the latest technological advancements of Kempower's ...

[Request Quote](#)



Mitsubishi Electric to ship samples of GaN power amplifier ...

Tokyo-based Mitsubishi Electric Corp says that on 21 September it will begin shipping samples of a new gallium nitride (GaN) power amplifier module that can help to ...

[Request Quote](#)

[Mitsubishi Electric Achieves World's First](#)



...

Mitsubishi Electric successfully verified its new PAM's performance in a demonstration using 5G-Advanced communication ...

[Request Quote](#)



[Mitsubishi Electric Achieves World's First Performance ...](#)

Mitsubishi Electric successfully verified its new PAM's performance in a demonstration using 5G-Advanced communication signals for the first time in the world. 1 ...

[Request Quote](#)



Contact Us

For catalog requests, pricing, or partnerships, please visit:

<https://www.energyinnovationday.pl>

Phone: +48 22 335 1273

Email: info@energyinnovationday.pl

Scan the QR code to contact us via WhatsApp.

