



# What is the controllable range of a 12V inverter





## Overview

---

Inverters come in a range of sizes from 150 watts through to 6000 watts and yours should be roughly double the size of the draw you'll be placing on it. This allows the inverter to work within its capacity and lowers the chance of blowing fuses in the event of a power surge.

Inverters come in a range of sizes from 150 watts through to 6000 watts and yours should be roughly double the size of the draw you'll be placing on it. This allows the inverter to work within its capacity and lowers the chance of blowing fuses in the event of a power surge.

This is the DC voltage range in which the inverter's maximum power point tracker operates. Start Voltage This value is the minimum DC voltage required for the inverter to turn on and begin operation. This is particularly important for solar applications because the solar module or modules must be.

A 12V to 240V inverter is a pivotal device designed to convert direct current (DC) power from a 12-volt battery into alternating current (AC) power with a nominal output of 240 volts. This conversion is vital for running household appliances, electronic devices, and other equipment that require.

A 12-volt DC power inverter is an essential device for converting 12V direct current (DC) from a battery into 120V alternating current (AC), allowing you to power standard household appliances on the go. Whether you need to charge a laptop in your car, run a small refrigerator while camping, or.

An inverter battery typically operates at 12V, 24V, or 48V. These voltages represent the nominal direct current (DC) needed for the inverter's function. Selecting the correct voltage is crucial, as it affects your energy needs and system performance. Choose the voltage that best suits your.

As a rule of thumb, the minimum required battery capacity for a 12-volt system is around 20 % of the inverter capacity. For 24-volt inverters, it is 10 %. The battery capacity for a 12-volt Mass Sine 12/1200, for instance, is 240 Ah, while a 24-volt Mass Sine 24/1500 inverter would require at least.

Our range of 12V Invertres and Pure Sinewave Inverter chargers feature some of



the best in class brands and our range of 12V to 240V Inverters and Inverter Chargers offer outstanding value for money thanks to their superior build quality and large range of features and extras. 12 volt power.



## What is the controllable range of a 12V inverter



### Understanding inverter voltage

For a 12V inverter, the maximum input inverter voltage is typically around 16VDC. This safety margin provides a buffer to accommodate fluctuations in the power source and ...

[Request Quote](#)

### Beginner's Guide to Power Inverters

Inverters come in a range of sizes from 150 watts through to 6000 watts and yours should be roughly double the size of the draw you'll be placing on it. ...

[Request Quote](#)



### [Inverter Battery Voltage: How Many Volts Are Needed For ...](#)

Proper voltage range: Each inverter battery has a specific voltage range that optimizes its performance. When voltage levels are maintained within this range, it enhances ...

[Request Quote](#)



### Beginner's Guide to Power Inverters

Inverters come in a range of sizes from 150 watts through to 6000 watts and yours should be roughly double the size of the draw you'll be placing on it. This allows the inverter to work ...

[Request Quote](#)



## 12 Volt DC Power Inverter: In-Depth Learning and Buying Guide

Recommended Power Range: 1000W - 2000W inverters, depending on the total power draw of essential devices. By choosing the right 12V inverter for your specific needs, ...

[Request Quote](#)

## 12V vs 24V vs 48V Inverter: How to Choose the Right System for ...

In this guide, we'll break down the differences between 12V, 24V, and 48V systems, covering efficiency, cost, compatibility, and ideal use cases--so you can make an ...

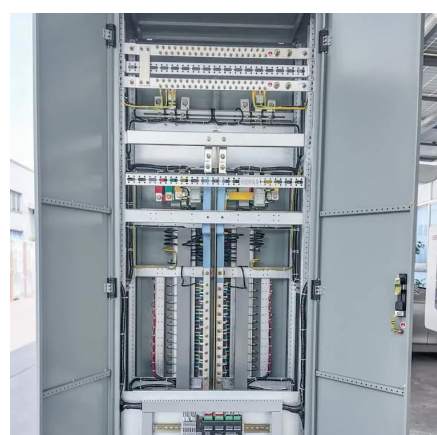
[Request Quote](#)



## Frequently Asked Questions about Inverters

As a rule of thumb you should divide the connected capacity by 10 for 12 volt and by 20 for 24 volt. This also includes all the power losses in the cables, fuses and the inverter. Is there a ...

[Request Quote](#)



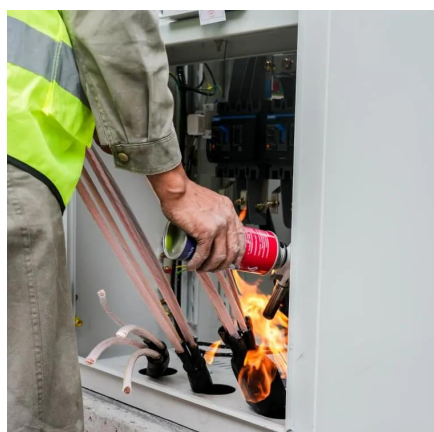
## [5 Things You Need to Know About 12V](#)



## [Inverters , L& T-SuFin](#)

We have compiled a list of five important things you need to know about 12v inverters to make an informed decision. We'll cover the types and safety tips of the products ...

[Request Quote](#)



## [12 Volt DC Power Inverter: In-Depth Learning and ...](#)

Recommended Power Range: 1000W - 2000W inverters, depending on the total power draw of essential devices. By choosing the ...

[Request Quote](#)



## [Inverter Specifications and Data Sheet](#)

### 8. Technical Specifications

1) Minimum start-up voltage is 41 VDC. Over-voltage disconnect: 65,5 V. 3) Peak power capacity and duration depends on start temperature of heatsink. Mentioned times are with cold unit. 5) ...

[Request Quote](#)



### [What Is A 12V Inverter And Where Is It Used?](#)

Key specs are continuous wattage (e.g., 1000W) and surge capacity (e.g., 2000W for 3 seconds). Pure sine wave models replicate grid power, while modified sine wave suits basic tools. ...

[Request Quote](#)



Peak Power Tracking Voltage. This is the DC voltage range in which the inverter's maximum power point tracker operates. Start Voltage. This value is the minimum DC voltage required for ...

[Request Quote](#)





## Contact Us

---

For catalog requests, pricing, or partnerships, please visit:

<https://www.energyinnovationday.pl>

Phone: +48 22 335 1273

Email: [info@energyinnovationday.pl](mailto:info@energyinnovationday.pl)

Scan the QR code to contact us via WhatsApp.

