



What is the base station maintenance power module





Overview

Rectifier modules play a vital role in keeping these stations running. They convert AC power to DC, charge batteries, and monitor voltage levels. If the mains fail, the system automatically switches to battery power, ensuring continuous operation.

Rectifier modules play a vital role in keeping these stations running. They convert AC power to DC, charge batteries, and monitor voltage levels. If the mains fail, the system automatically switches to battery power, ensuring continuous operation.

This article focuses on the three parts of switching power supply: "types and usage scenarios, configuration principles and algorithms, and daily management and maintenance". Part I Types and usage scenarios 1. Combined switching power supply 2. Embedded switching power supply 3. Wall-mounted.

Power supplies can be employed in each of the three systems that compose wireless base stations. These three systems are known as the environmental monitoring system, the data communication system, and the power supply system. Each of these systems is in turn divided into smaller sections and.

A base station represents an access point for a wireless device to communicate within its coverage area. It usually connects the device to other networks or devices through a dedicated high bandwidth wire of fiber optic connection. Base stations typically have a transceiver, capable of sending and.

The ESB-series outdoor base station system utilizes solar energy and diesel engines to achieve uninterrupted off grid power supply. Solar power generation is the use of photovoltaic panels to convert solar energy into electrical energy -48V DC, and then stabilize the load power supply through.

Many remote areas lack access to traditional power grids, yet base stations require 24/7 uninterrupted power supply to maintain stable communication services. For base stations located in deserts or other extreme environments, independent power supply is essential, as these areas are not only.

The 5G rollout is changing how we connect, but powering micro base stations—those small, high-impact units boosting coverage in cities and beyond—is no small feat. These stations need reliable, durable, and scalable power to deliver



5G's promise of speed and low latency. At NextG Power, we're. What are the components of a base station?

Power Supply: The power source provides the electrical energy to base station elements. It often features auxiliary power supply mechanisms that guarantee operation in case of lost or interrupted electricity, during blackouts. **Baseband Processor:** The baseband processor is responsible for the processing of the digital signals.

What does a base station do?

Frequency Allocation: The base stations are responsible for assigning frequencies to various users within an area of which they have control. This prevents conflicts between various users and ensures the best use of radio spectrum.

What are the properties of a base station?

Here are some essential properties: **Capacity:** Capacity of a base station is its capability to handle a given number of simultaneous connections or users. **Coverage Area:** The coverage area of a base station is that geographical area within which mobile devices can maintain a stable connection with the base station.

What is a wireless base station?

A base station represents an access point for a wireless device to communicate within its coverage area. It usually connects the device to other networks or devices through a dedicated high bandwidth wire or fiber optic connection. Base stations typically have a transceiver, capable of sending and receiving wireless signals;



What is the base station maintenance power module



[Stable Operation of Telecom Power Systems: How Rectifier ...](#)

Rectifier modules in Telecom Power System ensure base stations stay powered and reliable, maintaining continuous operation even in harsh weather conditions.

[Request Quote](#)

Telecommunication base station system working principle and ...

If the output power of the solar module is insufficient to provide all loads, it is supplemented by the rectifier module to maintain the normal operation of the communication ...

[Request Quote](#)



Base Stations

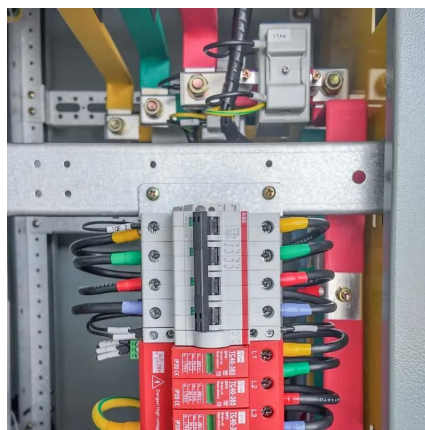
Power Supply: The power source provides the electrical energy to base station elements. It often features auxiliary power supply mechanisms that guarantee operation in ...

[Request Quote](#)

[Management and maintenance of base station ...](#)

This article focuses on the three parts of switching power supply: "types and usage scenarios, configuration principles and ...

[Request Quote](#)



[Communication Base Station Energy Solutions](#)

Many remote areas lack access to traditional power grids, yet base stations require 24/7 uninterrupted power supply to maintain stable communication services.

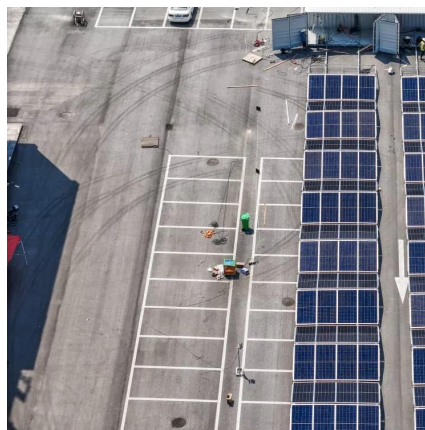
[Request Quote](#)



Power Supply Solutions for Wireless Base Stations Applications

Luckily, MORNSUN has a series of power solutions designed to provide state-of-the-art reliability while also curbing any unnecessary costs related to their installation, application, and ...

[Request Quote](#)



Management and maintenance of base station switching power ...

This article focuses on the three parts of switching power supply: "types and usage scenarios, configuration principles and algorithms, and daily management and maintenance".

[Request Quote](#)



[Telecom Base Station IoT Energy](#)



[Monitoring Solution ...](#)

Multiple AC sub circuits mainly used for AC power supply of 3-phase loads like "Lighting Power" and 1-phase loads like "Air Conditioner" in base station [AC Power Distribution]

[Request Quote](#)



Base Stations

Power Supply: The power source provides the electrical energy to base station elements. It often features auxiliary power supply ...

[Request Quote](#)

Maintenance of communication base station power supply system

At present, most of the main equipment in mobile base stations (hereinafter referred to as base stations) in the communication industry rely on DC uninterruptible power supply systems to ...

[Request Quote](#)



Base Station Power Supply

Discover high-quality connectors for base station power supplies by Amphenol LTW, ensuring durability and reliable performance.

[Request Quote](#)

5G Base Station Power Supply



System: NextG Power's Cutting ...

The 2000W/3000W power modules give you flexibility for any station size, while our 20Ah/50Ah LFP batteries offer long-lasting, safe power. The IP65 rating ensures they thrive in tough ...

[Request Quote](#)



[Communication Base Station Energy Solutions](#)

Many remote areas lack access to traditional power grids, yet base stations require 24/7 uninterrupted power supply to maintain stable ...

[Request Quote](#)



Contact Us

For catalog requests, pricing, or partnerships, please visit:

<https://www.energyinnovationday.pl>

Phone: +48 22 335 1273

Email: info@energyinnovationday.pl

Scan the QR code to contact us via WhatsApp.

