



What equipment does a solar combiner box refer to





Overview

In short, a solar combiner box is a centralized unit designed to collect, protect, and route solar-generated DC electricity efficiently and safely, acting as a bridge between solar panels and the inverter. DC Fuses and DC Circuit Breakers are essential components in a solar.

In short, a solar combiner box is a centralized unit designed to collect, protect, and route solar-generated DC electricity efficiently and safely, acting as a bridge between solar panels and the inverter. DC Fuses and DC Circuit Breakers are essential components in a solar.

Bottom Line Up Front: A solar combiner box consolidates multiple solar panel strings into a single output before sending power to the inverter. It simplifies wiring, enhances safety with overcurrent protection, and reduces installation costs—but it's typically only needed for systems with four or.

What is a Solar Combiner Box?

A Solar Combiner Box is an essential electrical device used in photovoltaic (PV) power generation systems. Its primary function is to combine the output currents of multiple solar panel strings (PV strings) into a single output, which is then sent to the inverter for.

The solar combiner box serves as the central collection point, acting as a structured hub for the high-voltage DC power generated by the photovoltaic modules. Solar panels are grouped into electrical circuits called “strings,” where multiple panels are wired together in a series connection to.

A PV Combiner Box is a device that brings together the output from multiple solar panel strings and channels it into a single output going to the inverter. It simplifies wiring, improves safety, and keeps your solar setup neat and manageable. In a typical solar power system, each string of panels.

A combiner box, also known as a PV combiner box or solar combiner box, is an electrical enclosure that consolidates multiple strings of solar panels into a single output. Positioned between the solar panels and the inverter, it simplifies system design and protects the electrical connections. By.



Modern solar power stations—from residential rooftops to 1500V industrial arrays—depend heavily on high-quality electrical enclosures, advanced protection components, and intelligent data systems to maintain long-term reliability. This guide explains how combiner boxes work, how they have evolved.



What equipment does a solar combiner box refer to



[Understanding PV Combiner Boxes: Design, Function, ...](#)

A combiner box is a key DC distribution device used between PV strings and the inverter. Each string consists of solar modules wired in series, and the combiner box gathers ...

[Request Quote](#)

[What is a Combiner Box as Used in PV System](#)

In short, a solar combiner box is a centralized unit designed to collect, protect, and route solar-generated DC electricity efficiently and ...

[Request Quote](#)



[What is a Combiner Box as Used in PV System](#)

In short, a solar combiner box is a centralized unit designed to collect, protect, and route solar-generated DC electricity efficiently and safely, acting as a bridge between solar ...

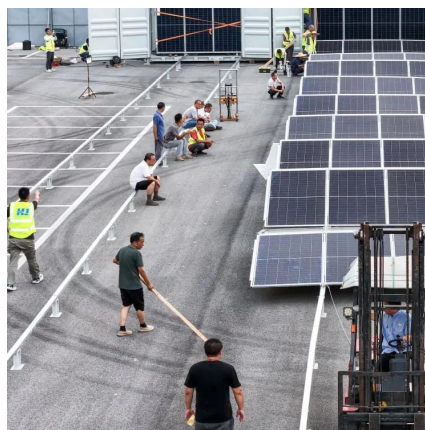
[Request Quote](#)

[Everything You Need to Know About PV Combiner Box](#)

A PV Combiner Box is a device that brings together the output from multiple solar panel strings and channels it into a single output going to the inverter. It simplifies wiring, ...



[Request Quote](#)



[What Does a Solar Combiner Box Do? Complete PV Guide 2025](#)

The solar combiner box is similar to a junction box, acting as an electrical enclosure that brings together multiple wires and cables through various ports. This seemingly ...

[Request Quote](#)



[What Is a Combiner Box as Used in PV System](#)

What Is a Combiner Box? A combiner box, also known as a PV combiner box or solar combiner box, is an electrical enclosure that consolidates multiple strings of solar panels ...

[Request Quote](#)



[Understanding PV Combiner Boxes: Design, ...](#)

A combiner box is a key DC distribution device used between PV strings and the inverter. Each string consists of solar modules wired in ...

[Request Quote](#)



[What Is a Solar Combiner Box and How](#)



[Does It Work?](#)

Discover the solar combiner box, the essential component that manages, protects, and consolidates the DC power output of your array.

[Request Quote](#)



Solar Combiner Box -- What It Does and Why It Improves Safety

A combiner box is an electrical enclosure used in solar PV systems to combine multiple DC input strings into a single, larger output that feeds an inverter or another downstream electrical ...

[Request Quote](#)

Solar combiner box: definition, core functions and working principle

What is a Combiner Box? A combiner box is an electrical device used in solar installations to combine the output current from multiple solar panels into a single circuit, ...

[Request Quote](#)



[Combiner Boxes, Isolators, Disconnects](#)

Think of a combiner box as a junction point for your solar panels. It streamlines the wiring from multiple solar panel strings into a single, more manageable circuit before it heads ...

[Request Quote](#)

What is a solar combiner box and



why is it used in photovoltaic ...

A solar combiner box is an essential component in large solar arrays, connecting multiple solar strings to a single inverter. Its primary function is to house the input overcurrent ...

[Request Quote](#)





Contact Us

For catalog requests, pricing, or partnerships, please visit:

<https://www.energyinnovationday.pl>

Phone: +48 22 335 1273

Email: info@energyinnovationday.pl

Scan the QR code to contact us via WhatsApp.

