



What does the commonly used A indicator of the battery cabinet mean





Overview

A battery sign on your dashboard indicates a problem with your car's charging system, most commonly a faulty alternator or a weak battery. Other possible causes include a loose or corroded battery terminal, bad wiring, or a worn serpentine belt that turns the alternator.

A battery sign on your dashboard indicates a problem with your car's charging system, most commonly a faulty alternator or a weak battery. Other possible causes include a loose or corroded battery terminal, bad wiring, or a worn serpentine belt that turns the alternator.

Your battery light, also called the dashboard battery indicator, is designed to let you know about an issue with your vehicle's battery or charging system. It could indicate that your battery is damaged or worn out, or that the charging system is malfunctioning in some way. When your vehicle is.

Every vehicle has a charging system warning light — it's the dashboard warning light that (usually) has a battery symbol on it, or it might say "BATT," "ALT" or "CHG." You should see it every time you start your car; it'll pop on for a few seconds and then go out. But if your battery light stays.

The battery symbol on your dashboard is a charging-system warning: it means your vehicle's 12-volt battery is not being charged properly—usually because of an alternator, belt, wiring, or voltage-regulator issue—and the car is running on limited battery reserve. If it illuminates while driving.

One of them is the battery indicator, a symbol that is often taken for granted or even ignored. In fact, if this indicator lights up, it can be an early signal that there is a problem with the vehicle's electrical system that should not be taken lightly. The battery indicator can help users to know.

A dashboard car battery light could signal various issues under the hood, from a glitch in the alternator to a damaged battery. But before you break out the jumper cables or stress about possible repairs, learn potential reasons why your dashboard battery light is on. It might be a quick fix! What.

Ever seen that battery symbol light up on your dashboard and immediately assume



the worst?

This video cuts through the confusion to explain what that indicator really means for your vehicle's health. Here's what you'll learn: ► Why the battery symbol doesn't always point to a failing battery. ► The.



What does the commonly used A indicator of the battery cabinet mea



[Understanding Your Car's Battery Warning Light , RepairPal](#)

Every vehicle has a charging system warning light -- it's the dashboard warning light that (usually) has a battery symbol on it, or it might say "BATT," "ALT" or "CHG." You should see it ...

[Request Quote](#)

[What To Do When Dashboard Battery Light Comes On](#)

You'll likely notice other signs of a weak battery charge, like sluggish power windows or a stereo that won't turn on. An illuminated battery light could be due to a number of ...

[Request Quote](#)



[Does The Dashboard Battery Symbol Mean A Bad Battery?](#)

Ever seen that battery symbol light up on your dashboard and immediately assume the worst? This video cuts through the confusion to explain what that indicator really means for your

[Request Quote](#)



[What does the battery sign on the dashboard mean?](#)

The battery symbol on your dashboard is a charging-system warning: it means your vehicle's 12-volt battery is not being charged properly--usually because of an alternator, belt, ...



[Request Quote](#)



[Battery Light On Car: What It Means , Jiffy Lube](#)

Your battery light, also called the dashboard battery indicator, is designed to let you know about an issue with your vehicle's battery or charging system. It could indicate that your battery is ...

[Request Quote](#)



Understanding Common Dashboard Indicator Symbols and Their ...

It typically illuminates when there is a problem with your vehicle's engine system. This could range from minor issues like a loose fuel cap to more serious problems such as a ...

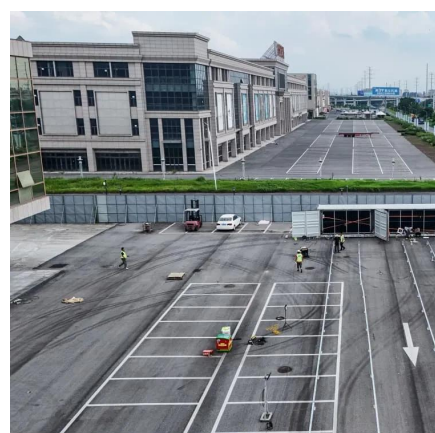
[Request Quote](#)



[What do the colors of the battery indicator mean?](#)

Typically, you'll encounter green, yellow/amber/orange, and red. Green signifies that the battery is either fully charged or has a substantial charge remaining. ...

[Request Quote](#)



[How to Read Your Battery Indicator and](#)



[Keep It Accurate](#)

Through this article, users will get to know more about what a battery indicator is, the types of battery indicators, how to read them, and tips on maintaining the battery indicator ...

[Request Quote](#)



[What Does Battery Light on Dash Mean? A Complete Guide](#)

Crucially, the problem is rarely the battery itself; it's almost always the charging system. This guide will walk you through diagnosing the cause and taking the right steps to ...

[Request Quote](#)

[Understanding the Meaning of the Battery Light](#)

In conclusion, the battery light is an important indicator on your vehicle's dashboard that implies a problem with the battery or electrical system. It is a warning sign that should not ...

[Request Quote](#)



[What do the colors of the battery indicator mean?](#)

Typically, you'll encounter green, yellow/amber/orange, and red. Green signifies that the battery is either fully charged or has a ...

[Request Quote](#)

[Understanding Your Car's Battery Warning](#)



Light

Every vehicle has a charging system warning light -- it's ...

[Request Quote](#)





Contact Us

For catalog requests, pricing, or partnerships, please visit:

<https://www.energyinnovationday.pl>

Phone: +48 22 335 1273

Email: info@energyinnovationday.pl

Scan the QR code to contact us via WhatsApp.

