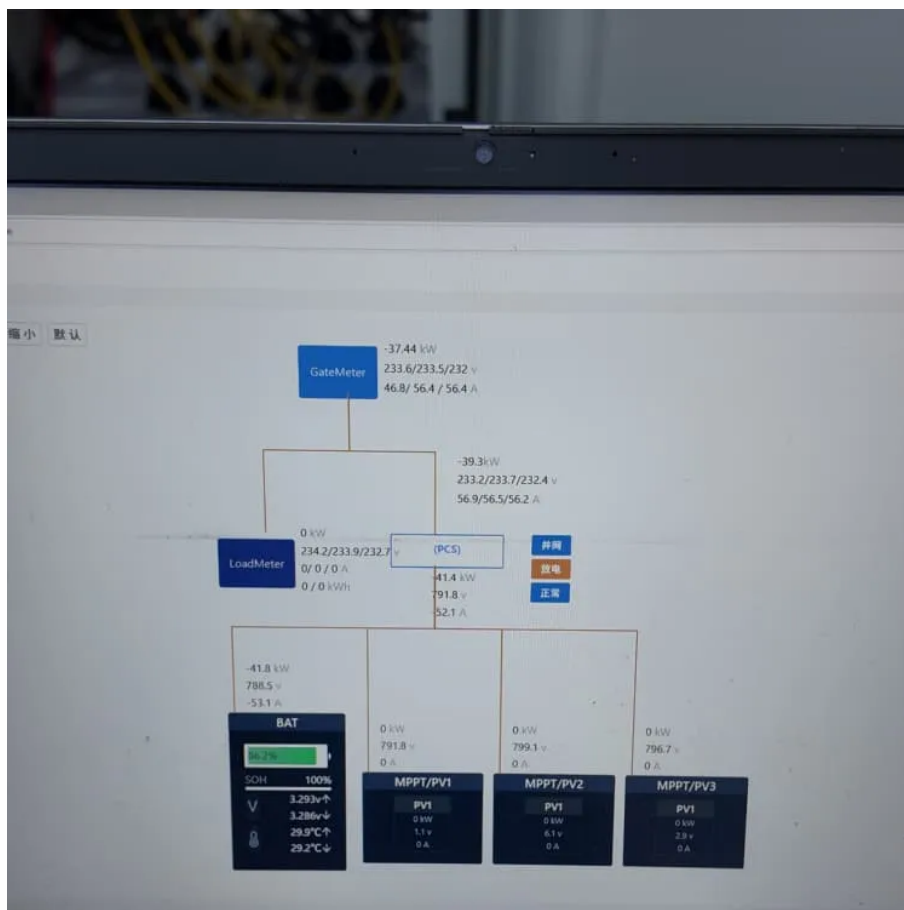


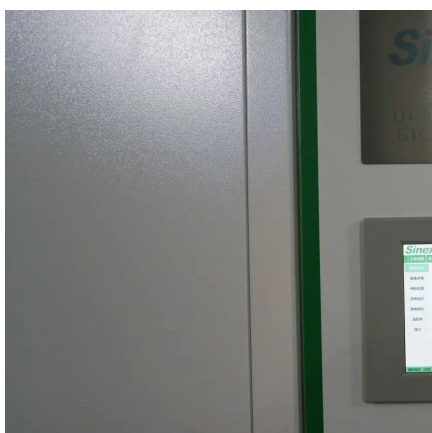


What does the base station power system consist of





What does the base station power system consist of



[How the Base battery works: A complete guide to ...](#)

This guide covers everything you need to know about how your Base battery operates, protects your home, and supports the power grid. You'll also ...

[Request Quote](#)

Base Station Energy Storage: The Unsung Hero of the World Power ...

This isn't sci-fi - it's the base station energy storage revolution reshaping our world power grid. Let's unpack how these unassuming tech hubs are becoming grid game-changers.

[Request Quote](#)



[Optimum sizing and configuration of electrical system for](#)

Typically, an electrical system of telecommunication base station consists of power sources such as grid power, solar power and generator power [4]. Fig. 1 illustrates a block ...

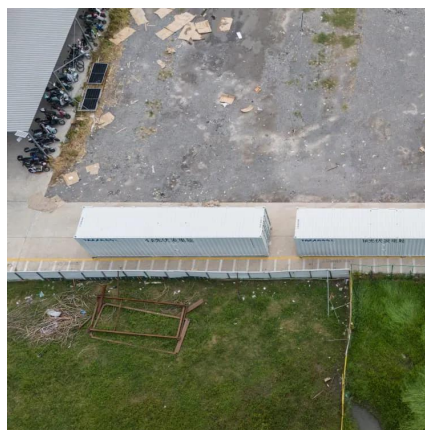
[Request Quote](#)



Base Stations

Power Supply: The power source provides the electrical energy to base station elements. It often features auxiliary power supply mechanisms that guarantee operation in ...

[Request Quote](#)



[Basic components of a 5G base station](#)

The power supply part is mainly composed of power sources (power electronic devices) and backup batteries.

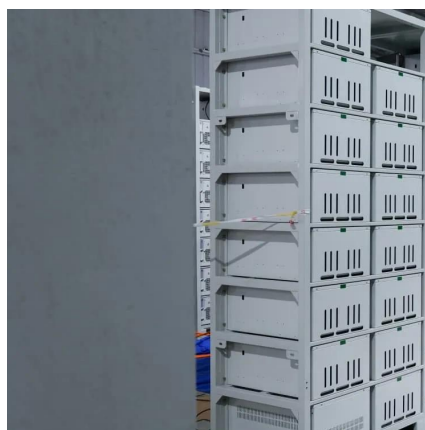
[Request Quote](#)



Different English Terms for Telecom Base Station Power Systems

Power Supply Units: The main source of energy for telecom operations. Energy Storage: Batteries that store excess power for later use. Backup Systems: These include ...

[Request Quote](#)



Cell site

A cell site, cell phone tower, cell base tower, or cellular base station is a cellular -enabled mobile device site where antennas and electronic ...

[Request Quote](#)

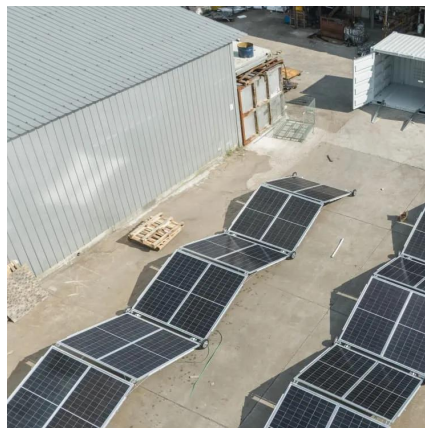
[How the Base battery works: A complete](#)



[guide to grid ...](#)

This guide covers everything you need to know about how your Base battery operates, protects your home, and supports the power grid. You'll also find answers to common battery myths ...

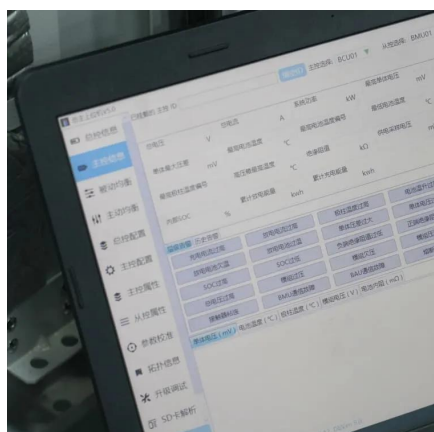
[Request Quote](#)



[Basic components of a 5G base station](#)

The power supply part is mainly composed of power sources (power electronic devices) and backup batteries.

[Request Quote](#)



[What is an energy storage base station? , NenPower](#)

An energy storage base station typically comprises several technologies, including batteries, flywheels, compressed air systems, and pumped hydro storage. These systems ...

[Request Quote](#)



Revolutionising Connectivity with Reliable Base Station Energy ...

Base station energy storage refers to batteries and supporting hardware that power the BTS when grid power is unavailable or to smooth out intermittent renewable sources like ...

[Request Quote](#)



[What Is a Telecom Base Station and How](#)



[Does It Work?](#)

Behind every base station's stable operation lies a robust power system. In telecom networks, uninterrupted power is essential for 24/7 communication reliability.

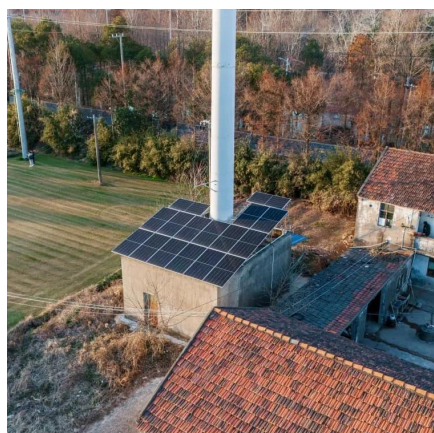
[Request Quote](#)



Cell site

A cell site, cell phone tower, cell base tower, or cellular base station is a cellular -enabled mobile device site where antennas and electronic communications equipment are placed (typically on ...

[Request Quote](#)



[What is an energy storage base station?_](#) [NenPower](#)

An energy storage base station typically comprises several technologies, including batteries, flywheels, compressed air systems, and ...

[Request Quote](#)



Base Station Energy Storage: The Unsung Hero of the World ...

This isn't sci-fi - it's the base station energy storage revolution reshaping our world power grid. Let's unpack how these unassuming tech hubs are becoming grid game-changers.

[Request Quote](#)



Contact Us

For catalog requests, pricing, or partnerships, please visit:

<https://www.energyinnovationday.pl>

Phone: +48 22 335 1273

Email: info@energyinnovationday.pl

Scan the QR code to contact us via WhatsApp.

