



# What brands of base station hybrid power supplies are there





## Overview

---

This overview highlights the top five inverter brands most frequently configured in Elum-managed hybrid PV systems, focusing on their key strengths, operational advantages, and ideal use cases.

This overview highlights the top five inverter brands most frequently configured in Elum-managed hybrid PV systems, focusing on their key strengths, operational advantages, and ideal use cases.

The growing adoption of hybrid PV systems has made inverter selection a critical factor for system performance, reliability, and return on investment. This year, certain brands stood out for their efficiency, advanced energy management features, and robust integration with battery storage, offering.

As 5G base stations multiply globally, their energy appetite threatens to devour operational efficiency. Did you know a single 5G site consumes 3x more power than 4G?

With over 13 million base stations projected by 2025, operators face a \$34 billion energy bill dilemma. The burning question: Can.

Base Transceiver Station (BTS) shelters, especially those in remote or off-grid locations, demand consistent, uninterrupted energy. Power fluctuations or outages directly impact network uptime, leading to service disruptions. Hybrid inverters emerge as a vital component in these setups.

Huawei provides a variety of green energy solutions, including solar scenarios that feature maximum power point tracking (MPPT) solar energy controllers, and hybrid solutions that combine renewable and conventional energies with specific energy-storage systems. For base stations, there are six.

The Telecom Base Station Intelligent Grid-PV Hybrid Power Supply System helps telecom operators to achieve "carbon reduction, energy saving" for telecom base stations and machine rooms. Stable, well-established, efficient and intelligent. The system is mainly used for the Grid-PV Hybrid solution in.

HJ-intelligent hybrid power system is used for communication base station



equipment, which can integrate photovoltaic modules, wind power generation modules, rectifier modules, inverter modules, power distribution units, monitoring unit equipment, and can provide stable DC and AC power supply. Which inverter brands are most commonly used in Elum-managed hybrid PV systems?

This overview highlights the top five inverter brands most frequently configured in Elum-managed hybrid PV systems in 2025, focusing on their key strengths, operational advantages, and ideal use cases. 1. Huawei.

How many power supply combinations are there in a base station?

For base stations, there are six power supply combinations-solar-only, solar+diesel, solar+mains, etc. Solar-only When there is sufficient sunlight, photovoltaic cells convert solar energy into electric power. Loads are powered by solar energy controllers, which also charge the batteries.

What is the best remote base station solution?

Considering that remote base stations must be highly-integrated, inexpensive, and modest, Huawei has developed its all-on-pole EasySite solution, which integrates the base station, antennas, transmission, and tower into one convenient package. Solar + diesel This solution introduces diesel generators when loads are heavy or rain is prolonged.

Can off-the-grid energy solutions help remote base stations?

Uninterrupted power supply for remote base stations has been a challenge since the founding of the wireless industry, but alternative sources have a chance of succeeding where traditional solutions have failed. With users no longer tolerating spotty coverage in the great outdoors, the need for off-the-grid energy solutions is ever growing.



## What brands of base station hybrid power supplies are there



### 5G Base Station Power Supply System: NextG Power's Cutting ...

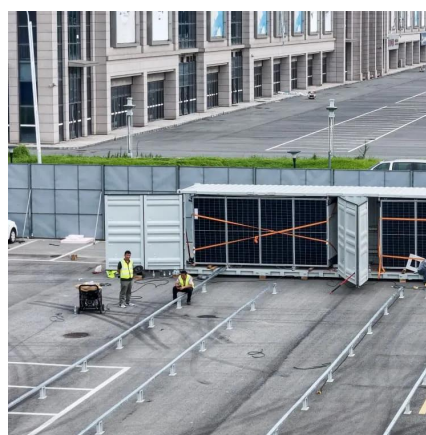
At NextG Power, we're tackling this challenge with our Reliable & Scalable Power for Next-Generation 5G Networks solution, featuring IP65 waterproof power modules (2000W or ...

[Request Quote](#)

### [Communication Base Station Smart Hybrid PV Power Supply ...](#)

The Ipandee hybrid PV Direct Current (DC) Power Supply System is a green energy power supply solution specifically designed for communication operators to save energy, reduce carbon ...

[Request Quote](#)



### [Uninterrupted remote site power supply](#)

To address this situation, Huawei offers PowerCube, an industry-leading hybrid power supply solution. Built along the lines of a Micro-Grid Energy System (MGES), it comprises four ...

[Request Quote](#)

### [Power Supply for Base Station Market](#)

Huawei Technologies leads the market with a 30% share of base station power systems globally, driven by proprietary solutions like its FusionPower series. These systems integrate AI-driven ...

[Request Quote](#)



## Intelligent hybrid power system

The hybrid power supply has the characteristics of wide voltage input, high-efficiency modules, support for mixed insertion, and centralized monitoring with multiple interfaces of RS485 and ...

[Request Quote](#)



## [5G Base Station Hybrid Power Supply , HuiJue Group E-Site](#)

As 5G base stations multiply globally, their energy appetite threatens to devour operational efficiency. Did you know a single 5G site consumes 3x more power than 4G? With ...

[Request Quote](#)



## [Communication Base Station Smart Hybrid PV Power Supply ...](#)

The system is mainly used for the Grid-PV Hybrid solution in telecom base stations and machine rooms, as well as off-grid PV base stations, Wind-PV hybrid power base stations and Diesel ...

[Request Quote](#)



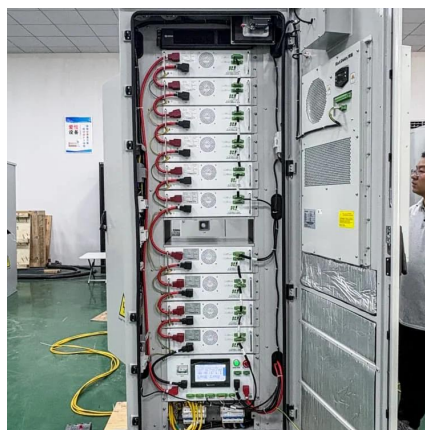
## [What brands of base station hybrid power](#)



## [supplies are there](#)

About What brands of base station hybrid power supplies are there At SolarTech Innovations, we specialize in comprehensive photovoltaic solutions including hybrid electric systems, high ...

[Request Quote](#)



## [Top 5 Inverter Brands for PV Hybrid Systems in 2025](#)

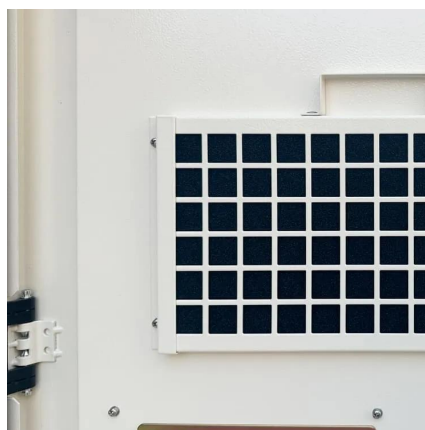
This overview highlights the top five inverter brands most frequently configured in Elum-managed hybrid PV systems, focusing on their key strengths, operational advantages, ...

[Request Quote](#)

## **Hybrid Inverter Selection for BTS Shelters: Specs That Matter**

Discover essential specifications for selecting hybrid inverters for BTS shelters and telecom towers. Learn how to ensure reliable, efficient, and scalable power solutions for ...

[Request Quote](#)



## [Uninterrupted remote site power supply](#)

To address this situation, Huawei offers PowerCube, an industry-leading hybrid power supply solution. Built along the lines of a Micro-Grid Energy ...

[Request Quote](#)



## Contact Us

---

For catalog requests, pricing, or partnerships, please visit:

<https://www.energyinnovationday.pl>

Phone: +48 22 335 1273

Email: [info@energyinnovationday.pl](mailto:info@energyinnovationday.pl)

Scan the QR code to contact us via WhatsApp.

