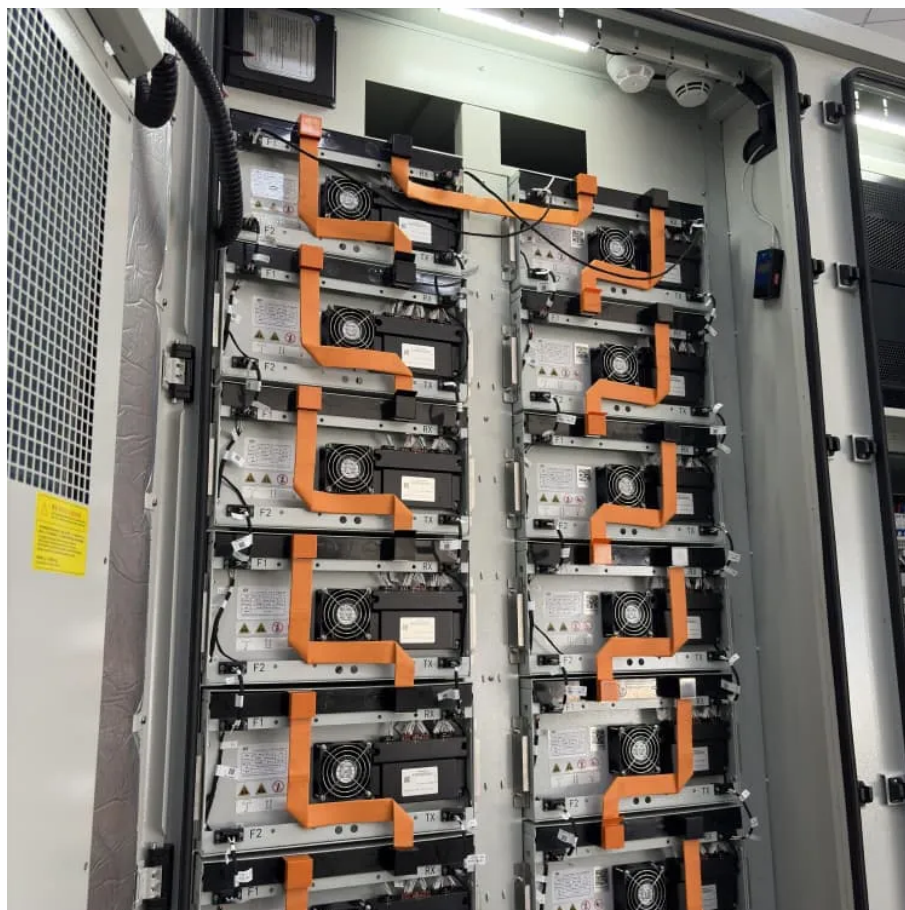




What are the emergency communication mobile base stations





Overview

Mobile communication towers for emergency response are portable, self-contained telecommunications structures designed to restore cellular and radio connectivity immediately after a disaster.

Mobile communication towers for emergency response are portable, self-contained telecommunications structures designed to restore cellular and radio connectivity immediately after a disaster.

Product Director Base Emergency Communications System (BECS) supports installation force protection, public safety, installation management, and homeland security. BECS manages, engineers, acquires, delivers, and supports CONUS non-tactical Land Mobile Radio (LMR), Computer-Aided Dispatch (CAD).

To rapidly restore damaged communication systems, we propose a UAV-based mobile base station equipped with Public Safety LTE (PS-LTE) technology to provide standalone communication capabilities. The proposed system includes PS-LTE functionalities, mission-critical push-to-talk, proximity-based.

Access to reliable communications services is a key factor in any emergency situation. ASTRI has succeeded in producing a mobile base station that allows for cost-efficient, low-latency, and stable mission-critical mobile broadband communications for emergency services. The Inventions Geneva-backed.

Mobile communication networks are divided into geographic areas called cells, each served by a base station (Figure 1). Mobile phones are the user's link to the network. The system is planned to ensure that mobile phones maintain the link with the network as users move from one cell to another. To.

Abstract—An emergency communication system is necessary for first responders, who need to enter areas with no network coverage or damaged network infrastructure due to natural or man-made disasters to perform emergency tasks. The first responders usually rely on fixed base stations deployed.

When disaster strikes, mobile communication towers for emergency response are often the only lifeline available for first responders and affected communities. These portable infrastructures rapidly restore signal when hurricanes, wildfires, or



earthquakes destroy permanent networks. For emergency.



What are the emergency communication mobile base stations



[Transportable base station for emergency communications](#)

Access to reliable communications services is a key factor in any emergency situation. ASTRI has succeeded in producing a mobile base station that allows for cost-efficient, low-latency, and ...

[Request Quote](#)

[An Independent UAV-Based Mobile Base Station](#)

To rapidly restore damaged communication systems, we propose a UAV-based mobile base station equipped with Public Safety LTE (PS-LTE) technology to provide ...

[Request Quote](#)



[Autonomous Relocation of Mobile Base Stations in ...](#)

At the same time, unusual peaks in traffic load could lead to much higher blocking probability for critical communication. A possible solution for such scenarios is through the use of mobile ...

[Request Quote](#)

Mobile cell sites

These mobile radio base stations guarantee full operation in just one day and in restricted spaces. COWs provide fully functional service, via vehicles such as trailers, vans and trucks, to areas ...

[Request Quote](#)



[Base Emergency Communications System](#)

Land Mobile Radio (LMR) is the Army's primary voice capability for first responders. LMR provides secure, portable communications; network ...

[Request Quote](#)



[Mobile Communication Towers for Emergency Response](#)

When disaster strikes, mobile communication towers for emergency response are often the only lifeline available for first responders and affected communities. These portable ...

[Request Quote](#)



[An Independent UAV-Based Mobile Base Station](#)

To rapidly restore damaged communication systems, we propose a UAV-based mobile base station equipped with Public Safety ...

[Request Quote](#)



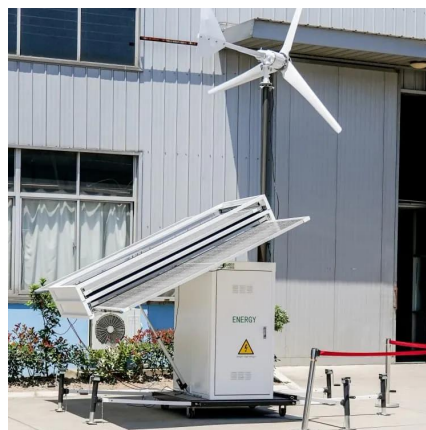
[Movable Base Stations in Mobile Networks](#)



[for Emergency ...](#)

An emergency communication system is necessary for first responders, who need to enter areas with no network coverage or damaged network infrastructure due to n

[Request Quote](#)



Movable Base Stations in Mobile Networks for Emergency Communications

An emergency communication system is necessary for first responders, who need to enter areas with no network coverage or damaged network infrastructure due to n

[Request Quote](#)

[Mobile Phone Base Stations EMF / Health Fact Pack](#)

Mobile communication networks are divided into geographic areas called cells, each served by a base station (Figure 1). Mobile phones are the user's link to the network.

[Request Quote](#)



[Movable Base Stations in Mobile Networks for Emergency ...](#)

The first responders usually rely on fixed base stations deployed according to the needs of the mission, to meet the communication needs. However, fixed base stations can pose several ...

[Request Quote](#)

APX(TM) Transportable Base Station



Deploy the APX Transportable Base station as a temporary base station for law enforcement, surveillance operations, and emergency response.

[Request Quote](#)



[Base Emergency Communications System](#)

Land Mobile Radio (LMR) is the Army's primary voice capability for first responders. LMR provides secure, portable communications; network coverage on/off Army cantonment areas, housing ...

[Request Quote](#)



Contact Us

For catalog requests, pricing, or partnerships, please visit:

<https://www.energyinnovationday.pl>

Phone: +48 22 335 1273

Email: info@energyinnovationday.pl

Scan the QR code to contact us via WhatsApp.

