



What are the components of a submarine energy base station





Overview

The built permanent and temporary around the world to maintain its fleet of and serve the needs of the crews. Submarine bases are that offer good fleet anchorage and are designed to refuel and resupply submarines. The peak number of US submarine bases was during , as the submarine was well suited for fighting i.

In essence, these components form the backbone of submarine bases, supporting various functions essential for submarine activities. Key infrastructure components include docking facilities, maintenance workshops, storage depots, and logistical support areas.

In essence, these components form the backbone of submarine bases, supporting various functions essential for submarine activities. Key infrastructure components include docking facilities, maintenance workshops, storage depots, and logistical support areas.

Submarine base facilities and infrastructure are vital components of naval strategic operations, ensuring the safety, readiness, and operational efficiency of submarine and naval vessel fleets. Their complexity reflects advanced technological, logistical, and defensive capabilities essential for.

These bases are meticulously planned and constructed to meet the unique requirements of submarines and their operations. Here are some key design elements that are integral to submarine bases: Layout and Structure: Submarine bases are designed with specific layouts and structures to accommodate.

Plaque stating New Suffolk, New York 's claim to be the first submarine base. The United States Navy built permanent and temporary submarine bases around the world to maintain its fleet of submarines and serve the needs of the crews. Submarine bases are military bases that offer good fleet.

The new microgrid, which includes a 7.4-MW natural gas-fired fuel cell park and a 10.75-MW combined heat and power system, can fully power Naval Submarine Base New London in the event of a grid outage. The Virginia-class attack submarine USS California (SSN 781) transits the Thames River during a.

Diesel-electric submarines, also known as conventional submarines, have a non-nuclear power plant that consists of two or more diesel-generators and large lead-acid battery packs. When the submarine is sailing on the surface or on snorting



depth, the diesel-generators are used to power the.

Submarine base infrastructure forms the backbone of naval warfare in the undersea domain, ensuring operational readiness and strategic superiority. Its design and development demand meticulous planning, combining engineering prowess with tactical considerations. Understanding the components. What is a submarine base?

Submarine bases are military bases that offer good fleet anchorage and are designed to refuel and resupply submarines. The peak number of US submarine bases was during World War II, as the submarine was well suited for fighting in the vast Pacific War, often in enemy waters. Many of the United States submarine bases were closed after the war.

How do submarine generators work?

When the submarine is sailing on the surface or on snorting depth, the diesel-generators are used to power the submarine and to charge the submarine's batteries. When the submarine submerges, the generators are switched off due to the absence of air supply and the batteries are used to power the submarine.

Which power plant configuration is best for a submarine?

With the use of the Mean Value First Principle submarine power plant model, multiple powerplant configurations can be compared with each other based on required mass and volume. Both mass and volume are critical design parameters for a submarine. Therefore, the power plant configuration with the lowest mass and volume is preferable.

Why do submarines use lithium-ion batteries and fuel cells?

Both lithium-ion batteries and fuel cells increase the submerged energy storage capacity, enabling submarines to sail submerged for longer periods of time. This is considered a large operational advantage for submarines. Both technologies are also already applied in actual operational submarines.



What are the components of a submarine energy base station



Strategic Insights into Submarine Bases and Infrastructure ...

Key elements include secure access points, reinforced docking areas, and specialized testing zones. The layout typically incorporates separate zones for storage, repair, ...

[Request Quote](#)

[New Microgrid Provides Resilience to U.S. Navy ...](#)

The new microgrid, which includes a 7.4-MW natural gas-fired fuel cell park and a 10.75-MW combined heat and power system, can fully ...

[Request Quote](#)



[Comprehensive Overview of Submarine Base Facilities and ...](#)

Submarine support vessels and auxiliary infrastructure are vital components of a well-functioning submarine base. Support vessels include tugs, supply ships, and floating ...

[Request Quote](#)



Design studies into the potential of novel submarine power plant

When the submarine submerges, the generators are switched off due to the absence of air supply and the batteries are used to power the submarine. Diesel-electric ...



[Request Quote](#)



Comprehensive Overview of Submarine Base Infrastructure in ...

Explore the critical aspects of submarine base infrastructure in naval warfare, including design, security, environmental factors, and future development trends.

[Request Quote](#)



New Microgrid Provides Resilience to U.S. Navy Submarine Base ...

The new microgrid, which includes a 7.4-MW natural gas-fired fuel cell park and a 10.75-MW combined heat and power system, can fully power Naval Submarine Base New ...

[Request Quote](#)



The Critical Role of Submarine Base Infrastructure and Logistics ...

Explore the critical role of submarine base infrastructure and logistics in undersea warfare, covering design, security, communication, and operational support systems.

[Request Quote](#)



United States Navy submarine bases



The United States Navy built permanent and temporary submarine bases around the world to maintain its fleet of submarines and serve the needs of the crews. Submarine bases are military bases that offer good fleet anchorage and are designed to refuel and resupply submarines. The peak number of US submarine bases was during World War II, as the submarine was well suited for fighting i...

[Request Quote](#)



Understanding Submarine Base Infrastructure for Naval Operations

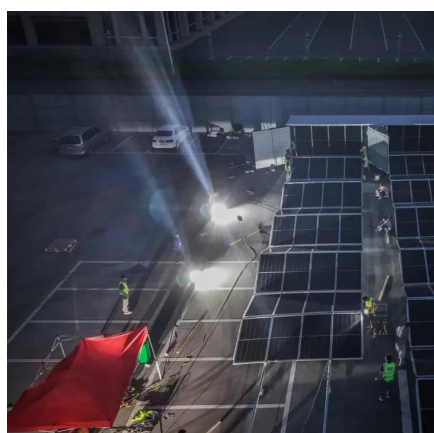
Effective submarine base infrastructure comprises various components, including docking facilities, maintenance workshops, storage areas, and logistics support, all of which ensure the ...

[Request Quote](#)

TME Submarine Base New London

For Naval Submarine Base New London, pursuing a microgrid is a critical step in achieving greater energy resilience and effectively maintaining its role as the "Home of the Submarine ...

[Request Quote](#)



United States Navy submarine bases

Submarine bases are military bases that offer good fleet anchorage and are designed to refuel and resupply submarines. The peak number of US submarine bases was during World War II, ...

[Request Quote](#)

[Exploring the Infrastructure of Submarine](#)



Bases

The Power Supply and Energy Systems in submarine bases often incorporate advanced technologies such as backup generators, energy storage systems, and efficient ...

[Request Quote](#)





Contact Us

For catalog requests, pricing, or partnerships, please visit:

<https://www.energyinnovationday.pl>

Phone: +48 22 335 1273

Email: info@energyinnovationday.pl

Scan the QR code to contact us via WhatsApp.

