



Wellington Outdoor Power Plant





Overview

View monthly electricity generation, the breakdown by power source, details on the 3 power plants in Wellington, KS, and more.

View monthly electricity generation, the breakdown by power source, details on the 3 power plants in Wellington, KS, and more.

Highlights from over 30 years of Diverse Project Delivery Low Error Rates, High Productivity Leading in specialized electrical construction nationwide, Wellington Power Corporation delivers the diversification and innovation necessary for meeting the unique needs of various corporate.

Rawhide Energy Station is an operating power station of at least 799-megawatts (MW) in Wellington, Larimer, Colorado, United States with multiple units, some of which are not currently operating. Loading map. Unit-level coordinates (WGS 84): CHP is an abbreviation for Combined Heat and Power. It.

A simple-cycle gas turbine at the Rawhide Energy Station in Wellington is the most efficient of Platte River's gas turbines with a 11,500 Btu/kWh heat rate. Credit: Courtesy/Platte River Power Authority The Platte River Power Authority cleared a major hurdle this week in its plan to install natural.

Join Platte River Power Authority to learn more about their upcoming 1041 permit application to construct up to six simple-cycle natural gas-fired aeroderivative turbines at its Rawhide Energy Station located north of Wellington. This proposed project will complement growing renewable resources and.

Click on Locations on Map or in the Table Below for Details of Each Plant An official website of the State of Maryland.

A significant development proposal took center stage during the Larimer County Land Use Hearing on March 10, 2025, as Platte River Power Authority (PRPA) outlined plans for new dispatchable turbines at their Rawhide Energy Station site, located at 2700 East County Road 82 in Wellington, Colorado.



Wellington Outdoor Power Plant



[Wellington, KS Electricity Generation Summary](#)

View monthly electricity generation, the breakdown by power source, details on the 3 power plants in Wellington, KS, and more.

[Request Quote](#)

Request a tour

Get a behind the scenes look into how Platte River generates safe, reliable and environmentally responsible energy. Tours are by reservation only and must be made at least one month in ...

[Request Quote](#)



Learn about Platte River's proposed project at the Rawhide ...

Join Platte River Power Authority to learn more about their upcoming 1041 permit application to construct up to six simple-cycle natural gas-fired aeroderivative turbines at its Rawhide Energy ...

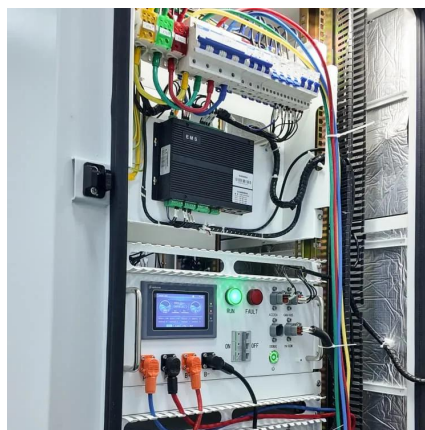
[Request Quote](#)



[Power Plant Locations In and Around Maryland](#)

Click on Locations on Map or in the Table Below for Details of Each Plant. An official website of the State of Maryland.

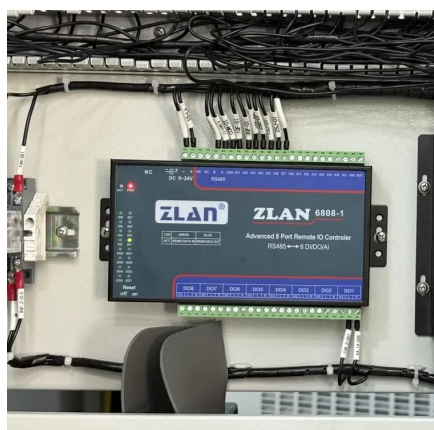
[Request Quote](#)



Rawhide Energy Station

Rawhide Energy Station is an operating power station of at least 799-megawatts (MW) in Wellington, Larimer, Colorado, United States with multiple units, some of which are ...

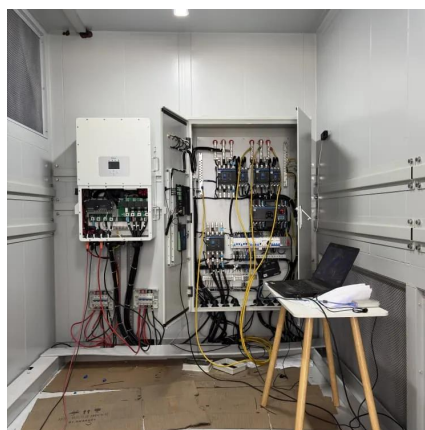
[Request Quote](#)



Electric Production

Wellington operates and maintains approximately 44 megawatts of generation facilities. The facilities include a 20 MW steam plant, a 20 MW gas turbine plant, and two diesel generators ...

[Request Quote](#)



Larimer County approves PRPA plan for natural gas turbines at ...

A simple-cycle gas turbine at the Rawhide Energy Station in Wellington is the most efficient of Platte River's gas turbines with a 11,500 Btu/kWh heat rate. Credit: Courtesy/Platte ...

[Request Quote](#)

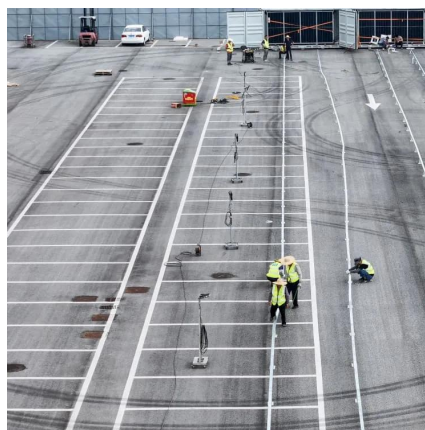


Rawhide Energy Station



A simple-cycle gas turbine at the Rawhide Energy Station in Wellington is the most efficient of Platte River's gas turbines with a 11,500 ...

[Request Quote](#)



CitizenPortal.ai

A significant development proposal took center stage during the Larimer County Land Use Hearing on March 10, 2025, as Platte River Power Authority (PRPA) outlined plans for new ...

[Request Quote](#)

[Wellington Energy Generation Facility](#)

KPP Energy proposes to construct the Wellington Energy Generation Facility project. It would be a solar facility on approximately 31.52 acres in Sumner County, Kansas.

[Request Quote](#)



Homepage

Leading in specialized electrical construction nationwide, Wellington Power Corporation delivers the diversification and innovation necessary for meeting the unique needs of various ...

[Request Quote](#)



Contact Us

For catalog requests, pricing, or partnerships, please visit:

<https://www.energyinnovationday.pl>

Phone: +48 22 335 1273

Email: info@energyinnovationday.pl

Scan the QR code to contact us via WhatsApp.

