



Uninterruptible power supply inverter current direction





Overview

The rectifier/charger receives the normal alternating current (AC) power supply, provides direct current (DC) power to the inverter, and charges the battery. The inverter converts the DC power to AC power to supply the intended loads.

The rectifier/charger receives the normal alternating current (AC) power supply, provides direct current (DC) power to the inverter, and charges the battery. The inverter converts the DC power to AC power to supply the intended loads.

2.2 Automatic Restart: Upon restoration of utility AC power, after a utility AC power outage and prior to a UPS automatic end of discharge shutdown, the rectifier/charger shall automatically restart, walk in, and gradually assume the inverter and battery recharge loads. Input AC voltage, line to.

When science teachers explain the basic idea of electricity to us as a flow of electrons, they're usually talking about direct current (DC). We learn that the electrons work a bit like a line of ants, marching along with packets of electrical energy in the same way that ants carry leaves. That's a.

The static uninterruptible power supply (SUPS) basically consists of four major blocks. They are the battery rectifier/charger, battery bank, inverter and the transfer switch. The rectifier/charger receives the normal alternating current (AC) power supply, provides direct current (DC) power to the.

The inverter device's role is to control the voltage and frequency of the power supply and seamlessly change the rotation speed of motors used in home appliances and industrial machineries. The first thing to keep in mind when it comes to enriching your understanding of the internal structure of an.

Normal Conditions: Load is supplied with power flowing from the normal power input terminals through the system with full ability to provide voltage regulation and battery backup if required. Abnormal Supply Conditions: If normal supply deviates from specified and adjustable voltage, voltage.

An inverter takes DC power, such as a battery, and switches the DC off and on to create AC power. There are two major technologies that perform this function. Pulse Width Modulated (PWM) inverter bridges and square wave or modified square



wave systems that feed a ferroresonant constant voltage.



Uninterruptible power supply inverter current direction



[How do inverters convert DC electricity to AC?](#)

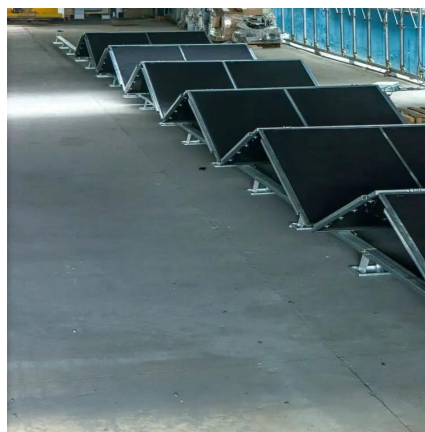
An easy-to-understand explanation of how an inverter converts DC (direct current) electricity to AC (alternating current).

[Request Quote](#)

How does an inverter work?

Firstly, the converter circuit used in the front part constantly converts alternating current to direct current. This process is called rectification. ...

[Request Quote](#)



[Their Role in Uninterruptible Power Supply \(UPS\) Systems](#)

This article explores the working principle of static inverters, the importance of sinusoidal output waveforms, the role of filters in inverter circuits, and the significance of uninterrupted power ...

[Request Quote](#)



[How Inverters Work and Why They're Needed](#)

The most important function of an inverter is to provide clean, uninterrupted power with a low distortion sine wave to critical loads. It does this by converting DC power into AC ...



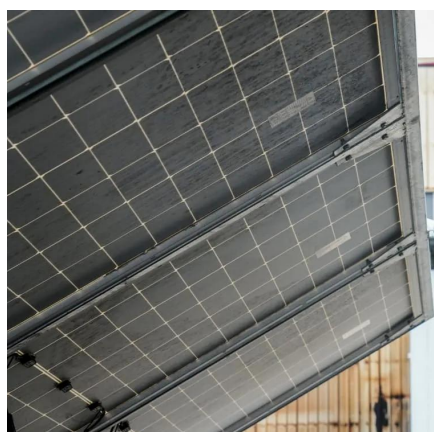
[Request Quote](#)



SECTION 263353

When power is restored at the normal supply terminals of the system, controls automatically synchronize the inverter with the external source before transferring the load. The rectifier ...

[Request Quote](#)



UNINTERRUPTIBLE POWER SUPPLY

2.2 Automatic Restart: Upon restoration of utility AC power, after a utility AC power outage and prior to a UPS automatic end of discharge shutdown, the rectifier/charger shall automatically ...

[Request Quote](#)



Uninterruptible Power Supply Inverters: Everything You Need to ...

The inverter within the UPS converts the stored DC (Direct Current) power into AC (Alternating Current) power, which is used by most electronic devices. How Does an Uninterruptible Power ...

[Request Quote](#)



[How do inverters convert DC electricity to](#)



[AC?](#)

What's The Difference Between DC and AC Electricity? What Is An Inverter? How Does An Inverter Work? Types of Inverters What Are Inverters like? If you simply switch a DC current on and off, or flip it back and forth so its direction keeps reversing, what you end up with is very abrupt changes of current: all in one direction, all in the other direction, and back again. Draw a chart of the current (or voltage) against time and you'll get a square wave. Although electricity varying in that fashion See more on explain that stuff



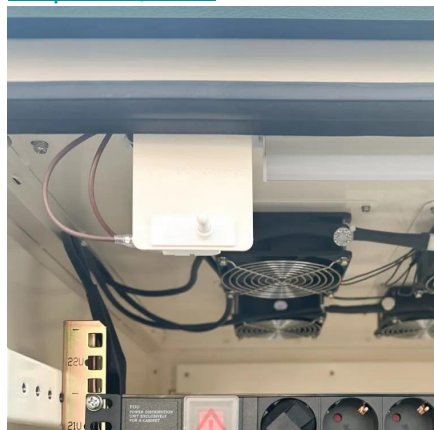
Videos of Uninterruptible Power Supply Inverter Current Direction

Watch video 9:58 How Does a UPS Work? Uninterruptible Power Supply Explained ELEKTRECA 2.8K views Oct 19, 2024 Watch video 13:39 Power Inverters Explained - How do they work working principle IGBT The Engineering Mindset 4M views Apr 7, 2020 Watch video 8:41 How Inverters Work - Working principle rectifier The Engineering Mindset 1.3M views Dec 12, 2017 Watch full video PDHonline [PDF]

Overview of Uninterruptible Power Systems (UPS)

The power semiconductor permits the current to flow in one direction from the anode to the cathode, whenever the anode voltage is positive relative to the cathode.

[Request Quote](#)



[Uninterruptible Power Supply: What It Is and How It Works](#)

A UPS rectifier performs two important roles: converting the input utility power from AC (Alternating Current) to DC (Direct Current) and recharging the batteries while DC ...

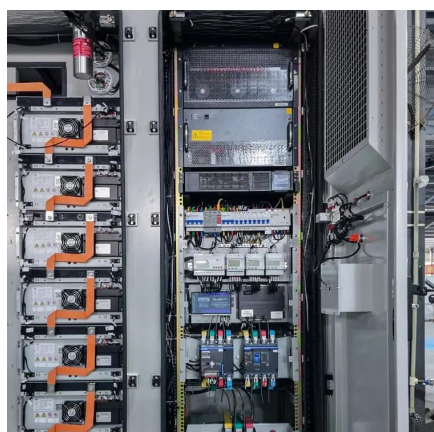
[Request Quote](#)



How does an inverter work?

Firstly, the converter circuit used in the front part constantly converts alternating current to direct current. This process is called rectification. The wave's direction and magnitude changes ...

[Request Quote](#)



Principle of APC uninterruptible power supply inverter (Part 1)

Inverter is the process of converting direct current into alternating current, and the circuit that implements the inverter is called an inverter circuit. The AC output side of the APC ...

[Request Quote](#)

Overview of Uninterruptible Power Systems (UPS)

The power semiconductor permits the current to flow in one direction from the anode to the cathode, whenever the anode voltage is positive relative to the cathode.

[Request Quote](#)





Contact Us

For catalog requests, pricing, or partnerships, please visit:

<https://www.energyinnovationday.pl>

Phone: +48 22 335 1273

Email: info@energyinnovationday.pl

Scan the QR code to contact us via WhatsApp.

