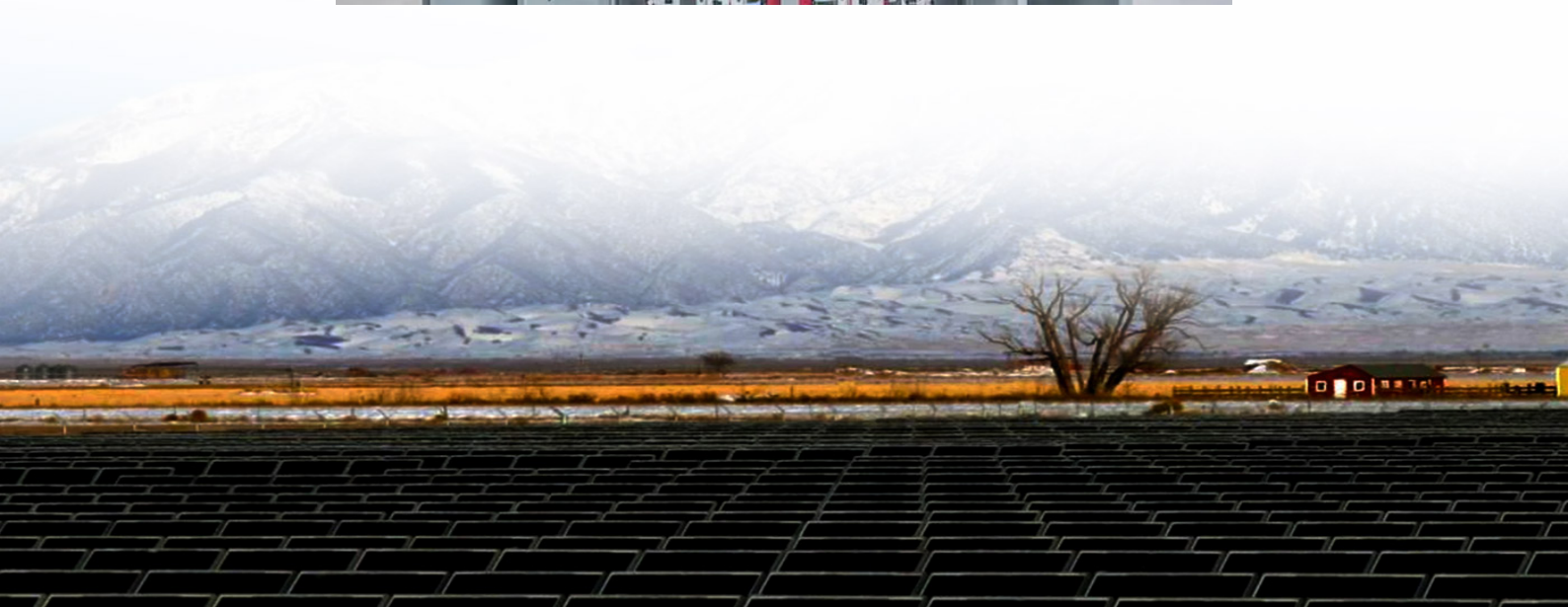
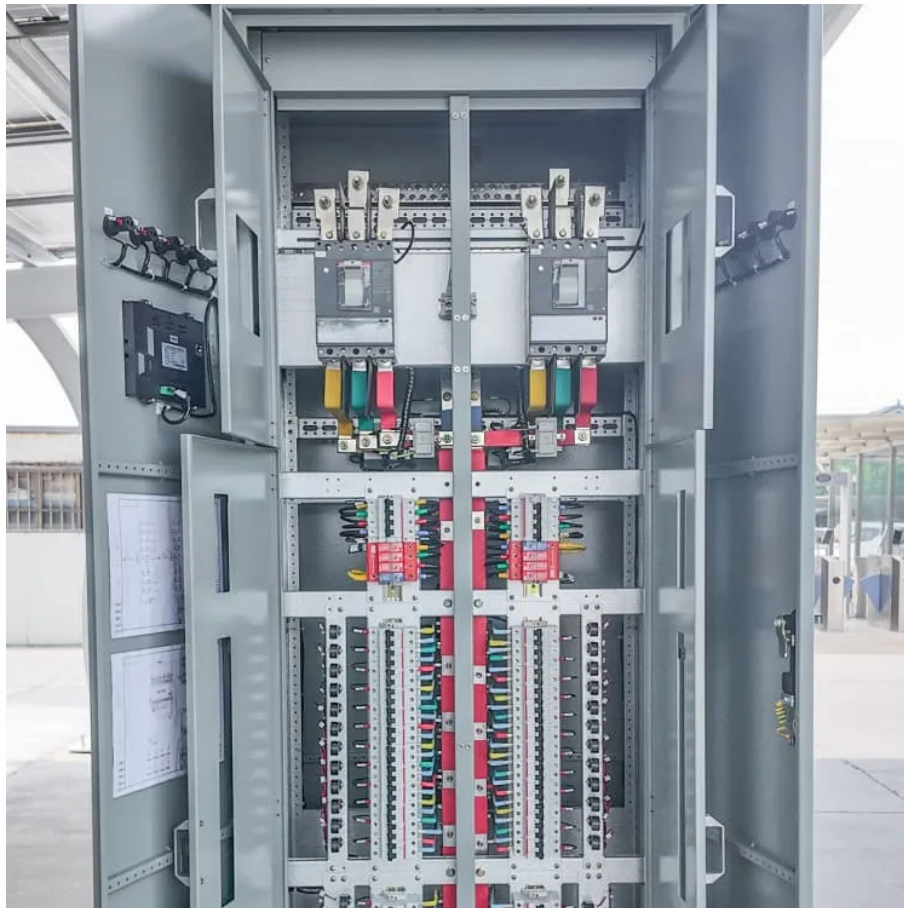




# Uninterruptible power supply deployment at Palikir solar container communication station





## Uninterruptible power supply deployment at Palikir solar container co



### Why there is a state called `TASK_UNINTERRUPTIBLE` in Linux ...

As you could read from that answer, setting the current process state to `TASK_UNINTERRUPTIBLE` is needed for make `schedule()` call, performed by that thread, to ...

[Request Quote](#)



### [Do we need to call `set\_current\_state\(TASK`](#)

Yes, you must call `set_current_state()` before calling `schedule()`, because otherwise the scheduler will not remove the task from the run queue (if you just want to ...

### linux

For Linux "defunct" and "zombie" processes are the same. From man ps: Processes marked are dead processes (so-called "zombies") that remain because ...

[Request Quote](#)



### Linux Process States

A process performing I/O will be put in D state (uninterruptable sleep), which frees the CPU until there is a hardware interrupt which tells the CPU to return to executing the ...

[Request Quote](#)



[Request Quote](#)



[In Linux, what do all the values in the "top" command mean?](#)

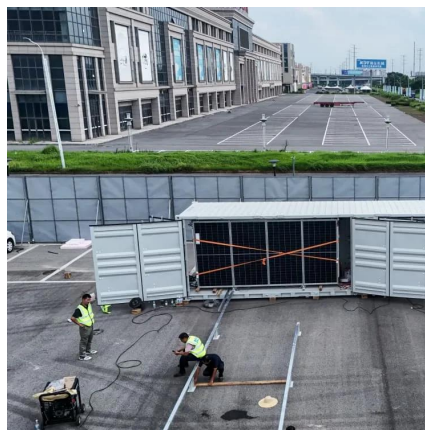
The man page says what the state codes are mapped to, but not what they actually mean. From the top man page: 'D' = uninterruptible sleep 'R' = running 'S' = sleeping ...

[Request Quote](#)

## linux

I understand these are uninterruptible sleep states often related to waiting for data from hardware such as a hard disk. This is a production server so rebooting is a very last ...

[Request Quote](#)



[how to find out what it is waiting for](#)

When looking at the process with "ps ax" the stat column is "DI" which means "uninterruptible sleep (usually IO)". Is it possible to find out more details on what the process is ...

[Request Quote](#)

## linux



An uninterruptible process is a process which happens to be in a system call (kernel function) that cannot be interrupted by a signal. To understand what that means, you need to understand ...

[Request Quote](#)



**C**

On one particular system we see WIS-Streamer get stuck in an TASK\_UNINTERRUPTIBLE state; From the command line: the ps status for the process is ...

[Request Quote](#)

### [How to stop 'uninterruptible' process on Linux?](#)

I have a VirtualBox process hanging around which I tried to kill (KILL/ABORT) but without success. The parent pid is 1 (init). top shows the process as D which is documented as ...

[Request Quote](#)





## Contact Us

---

For catalog requests, pricing, or partnerships, please visit:

<https://www.energyinnovationday.pl>

Phone: +48 22 335 1273

Email: [info@energyinnovationday.pl](mailto:info@energyinnovationday.pl)

Scan the QR code to contact us via WhatsApp.

