



Uninterruptible Power Supply for Ring Main Unit





Overview

The ring main unit (RMU) is a compact switchgear device designed for 10kV ring-type power supply systems. It utilizes a combination of load switches and fuses to achieve fault isolation and power transfer, ensuring uninterrupted power supply.

The ring main unit (RMU) is a compact switchgear device designed for 10kV ring-type power supply systems. It utilizes a combination of load switches and fuses to achieve fault isolation and power transfer, ensuring uninterrupted power supply.

Ring Main Units play an important role in ensuring reliable, flexible, and safe power delivery in modern medium-voltage distribution systems. As urban expansion and growing electrical loads, ring networks have become essential for utilities and large power users to ensure an uninterrupted supply.

This is where Ring Main Units (RMUs) play a vital role. RMUs are compact, fully enclosed switchgear designed for medium-voltage power distribution networks. They enhance reliability, improve safety, and support the growing demands of modern smart grids. Their ability to quickly isolate faults and

This guide will demystify the Ring Main Unit for you. We'll use clear, professional language to explore its core functions and inner workings, and explain exactly why it's a critical component in guaranteeing power reliability. Whether you're an electrical engineer or simply curious about how the

Uninterrupted power supply is more critical than ever, and the reliability of electrical infrastructure is paramount. Within medium-voltage (MV) distribution networks, there exists a frequently overlooked yet crucial piece of equipment—the Ring Main Unit (RMU). An RMU is a compact.

The ring main unit (RMU) is a compact switchgear device designed for 10kV ring-type power supply systems. It utilizes a combination of load switches and fuses to achieve fault isolation and power transfer, ensuring uninterrupted power supply. Widely applied in urban distribution networks.

Ring Main Unit (RMU) is a switchgear device used in secondary distribution systems, i.e., between the distribution substation and the end consumer to ensure continuous power supply and isolate the faulty section from the network. The main



purpose of using a ring main unit is to provide an.



Uninterruptible Power Supply for Ring Main Unit



Ring Main Unit Operation Explained For Electrical Ring Networks

As urban expansion and growing electrical loads, ring networks have become essential for utilities and large power users to ensure an uninterrupted supply. In these ...

[Request Quote](#)

[Ring Main Unit Switchgear: A Comprehensive Guide](#)

1) What is a ring main unit (RUM)? A Ring Main Unit, often called an RMU, is a compact switch cabinet that manages power flow in a ...

[Request Quote](#)



[What is a Ring Main Unit? -- The Brains of the Power Grid](#)

This guide explains what a Ring Main Unit (RMU) is, how it works, and why it's key to safe, reliable power.

[Request Quote](#)

[The Essential Importance of the Ring Main Unit ...](#)

Uninterrupted power supply is more critical than ever, and the reliability of electrical infrastructure is paramount. Within medium-voltage ...

[Request Quote](#)



Ring Main Unit Switchgear

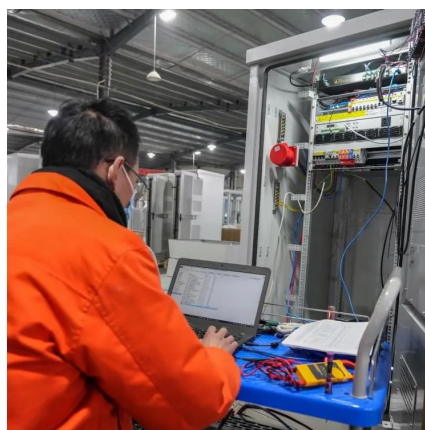
It utilizes a combination of load switches and fuses to achieve fault isolation and power transfer, ensuring uninterrupted power supply. Widely applied in urban distribution networks, residential ...

[Request Quote](#)

Ring Main Unit (RMU)

Read this article to learn the structure, types, advantages, and applications of a ring main unit (RMU). What is a Ring Main Unit? A Ring Main Unit (RMU) is a small switchgear ...

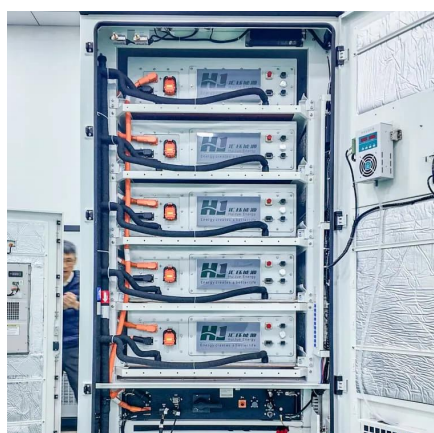
[Request Quote](#)



Ring Main Unit (RMU)

A Ring Main Unit (RMU) is a compact, enclosed switchgear system used in medium-voltage power distribution networks. It provides flexibility in network operations by allowing multiple ...

[Request Quote](#)



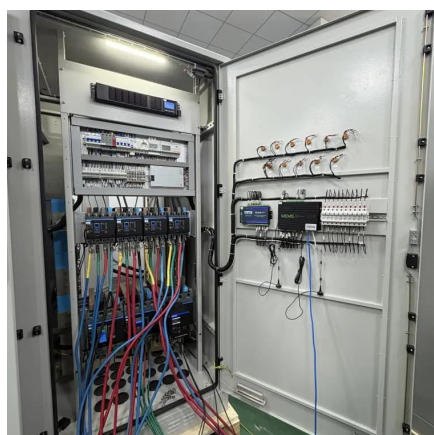
What Is a Ring Main Unit and How



Does It Work in Modern Power ...

A Ring Main Unit is a compact, metal-enclosed switchgear designed for medium-voltage power distribution, typically ranging from 6kV to 40.5kV. The primary function of a Ring ...

[Request Quote](#)



[A Practical Guide to the Operation of Ring Main Units](#)

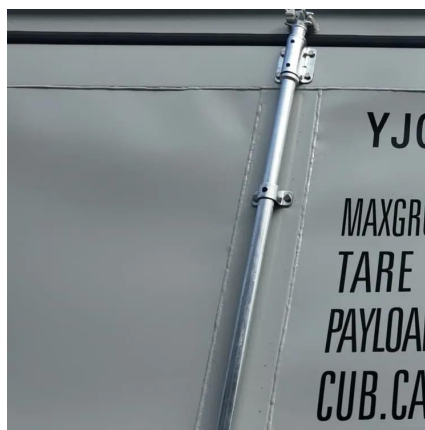
Ring Main Units are compact modules that are gas-insulated and sealed, comprising main switching devices and ancillary components to ensure continuous secondary ...

[Request Quote](#)

[What is a Ring Main Unit? -- The Brains of the ...](#)

This guide explains what a Ring Main Unit (RMU) is, how it works, and why it's key to safe, reliable power.

[Request Quote](#)



[The Essential Importance of the Ring Main Unit \(RMU\)](#)

Uninterrupted power supply is more critical than ever, and the reliability of electrical infrastructure is paramount. Within medium-voltage (MV) distribution networks, there ...

[Request Quote](#)

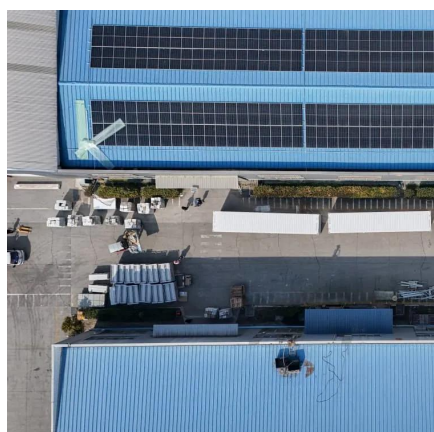
[Ring Main Units: An Integral Part of](#)



[Modern ...](#)

RMUs are widely used in urban areas, industries, and commercial buildings where uninterrupted power supply is essential. An ...

[Request Quote](#)



Ring Main Units: An Integral Part of Modern Electrical Distribution

RMUs are widely used in urban areas, industries, and commercial buildings where uninterrupted power supply is essential. An RMU operates within a ring-type power distribution ...

[Request Quote](#)

[Ring Main Unit Switchgear: A Comprehensive Guide](#)

1) What is a ring main unit (RUM)? A Ring Main Unit, often called an RMU, is a compact switch cabinet that manages power flow in a building or a town. Inside, the cables are ...

[Request Quote](#)





Contact Us

For catalog requests, pricing, or partnerships, please visit:

<https://www.energyinnovationday.pl>

Phone: +48 22 335 1273

Email: info@energyinnovationday.pl

Scan the QR code to contact us via WhatsApp.

