



Tile trough solar thermal power generation





Tile trough solar thermal power generation



10.2. Parabolic Trough Collector Systems , EME 811: Solar Thermal

Solar Energy Generating Systems (SEGS) is the name of the world's largest parabolic trough solar thermal electricity generation system, developed by Luz in southern California, USA.

[Request Quote](#)



Troughs , Solar Dynamics LLC

Success in this transition will establish a new technology pathway for next-generation CSP installations like our Dispatchable Solar Power plant, as well as for other solar thermal ...

[Request Quote](#)



Tile trough solar power generation

Why are electricity generator tiles a sustainable solution? With its innovative design, the Electricity Generator Tiles stands as a sustainable solution to address the ever - growing global energy ...

[Request Quote](#)

Optimizing Thermal Performance in Parabolic Trough Solar ...

Abstract. The efficiency of a Parabolic Trough (PT) Solar Power Plant heavily relies on its thermal performance. Modern technology has allowed for the creation of more efficient methods of ...



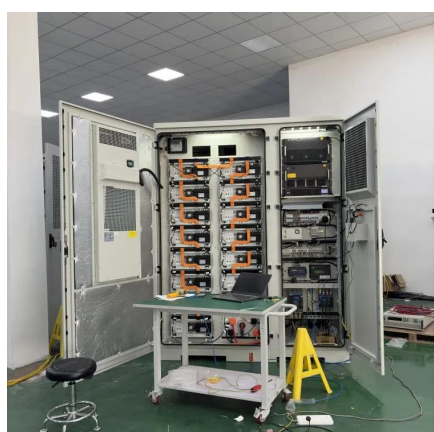
[Request Quote](#)



Design and Implementation of the Solar Field and Thermal ...

In this study, detailed solar field and thermal storage system models for a parabolic trough power plant are implemented based on the specifications from data obtained from ...

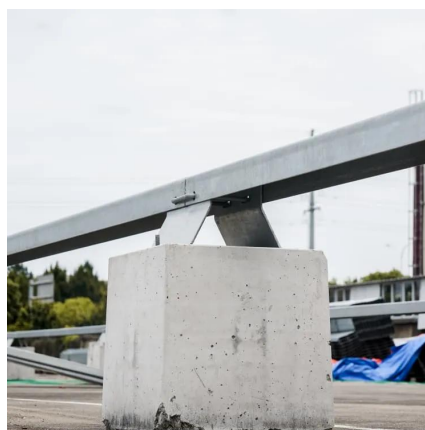
[Request Quote](#)



Parabolic Trough

DOE funds solar research and development (R&D) in parabolic trough systems as one of four concentrating solar power (CSP) technologies aiming to meet the goals of the SunShot Initiative.

[Request Quote](#)



10.2. Parabolic Trough Collector Systems , EME 811: Solar ...

Solar Energy Generating Systems (SEGS) is the name of the world's largest parabolic trough solar thermal electricity generation system, developed by Luz in southern California, USA.

[Request Quote](#)



Parabolic trough solar collectors: A



sustainable and efficient ...

Parabolic trough solar collectors are a type of solar thermal collector that can be used to generate electricity. This paper discusses the potential advantages and challenges of ...

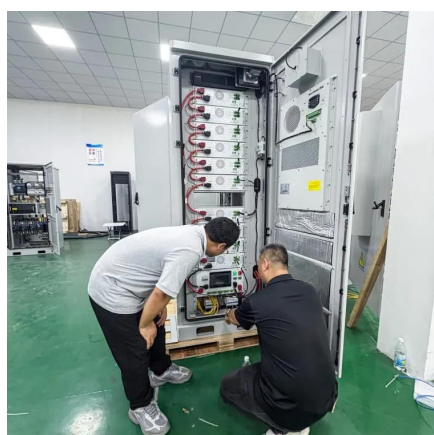
[Request Quote](#)



Parabolic trough

The enclosed trough architecture encapsulates the solar thermal system within a greenhouse-like glasshouse. The glasshouse creates a protected environment to withstand the elements that ...

[Request Quote](#)



[Parabolic Trough Solar Thermal Electric](#)

Troughs , Solar Dynamics LLC

Success in this transition will establish a new technology pathway for next-generation CSP installations like our Dispatchable Solar Power plant, as ...

[Request Quote](#)



ESTELA , Parabolic Trough

A new generation of parabolic trough plants aims to reach a higher HTF temperature, allowing the full integration of the solar field and the storage ...

[Request Quote](#)



[Power Plants](#)

Although many solar technologies have been demonstrated, parabolic trough solar thermal electric power plant technology represents one of the major renewable energy success stories ...

[Request Quote](#)



ESTELA , Parabolic Trough

A new generation of parabolic trough plants aims to reach a higher HTF temperature, allowing the full integration of the solar field and the storage system. This "second generation" should ...

[Request Quote](#)



Contact Us

For catalog requests, pricing, or partnerships, please visit:

<https://www.energyinnovationday.pl>

Phone: +48 22 335 1273

Email: info@energyinnovationday.pl

Scan the QR code to contact us via WhatsApp.

