

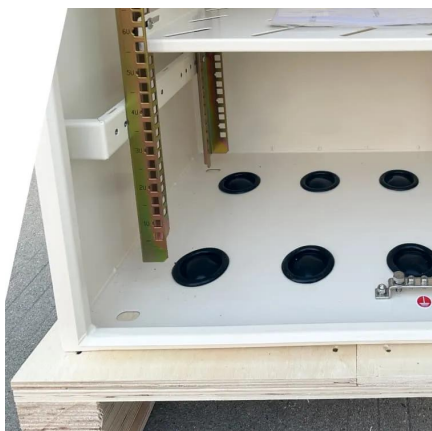


Three-phase PWM inverter IGBT





Three-phase PWM inverter IGBT



[How to reduce system cost in a three-phase IGBT-based ...](#)

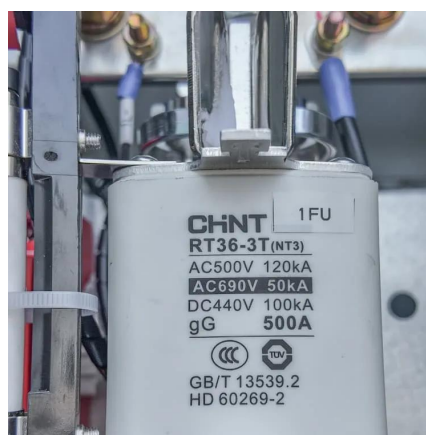
Each phase of a three-phase inverter uses a high- and low-side IGBT to apply an alternating positive and negative voltage to the motor coils. Pulse-width modulation (PWM) to the motor ...

[Request Quote](#)

3-phase IGBT-inverter

Master 3-phase IGBT inverter operation: understand IGBTs, switching principles, and PWM control for generating AC from DC power.

[Request Quote](#)



[Design Consideration for IGBT-Based PWM](#)

...

The focus of this project is to design and construct a three- phase, 2KVA, Microcontroller based, Insulated Gate Bipolar Transistor ...

[Request Quote](#)



Introduction

precise control of the electromagnetic torque. Pulse width modulation (PWM) current source inverter (CSI) fed ac motor drives are often used in high power (1,000-10 000 hp) applications. ...

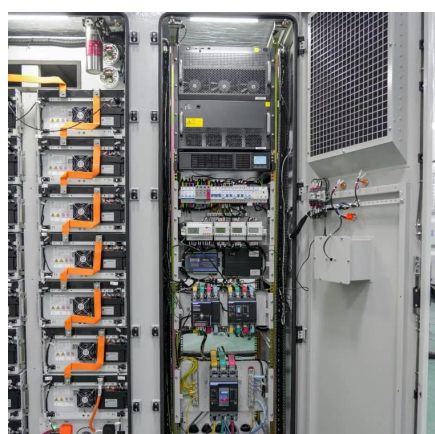
[Request Quote](#)



[Design Consideration for IGBT-Based PWM Inverter-Fed ...](#)

The focus of this project is to design and construct a three- phase, 2KVA, Microcontroller based, Insulated Gate Bipolar Transistor (IGBT) inverter for the control of an ...

[Request Quote](#)



[Three phase IGBT inverter under sinusoidal PWM control](#)

The main purpose of these topologies is to provide a three-phase voltage source, where the amplitude, phase, and frequency of the voltages should always be controllable.

[Request Quote](#)



[Dynamics of IGBT based PWM Converter A Case Study](#)

In this paper, we have studied and analyzed the dynamics of IGBT based PWM converter with subjected to different conditions like transient state, steady state feeding the RLC load. ...

[Request Quote](#)



Paper Title (use style: paper title)



Abstract- IGBT-based three-phase inverters are developed for microgrids and sustainably powered industrial operations. This inverter converts DC electricity into three-phase AC for ...

[Request Quote](#)



[A Novel Hybrid SPWM and SHEPWM based Three Phase ...](#)

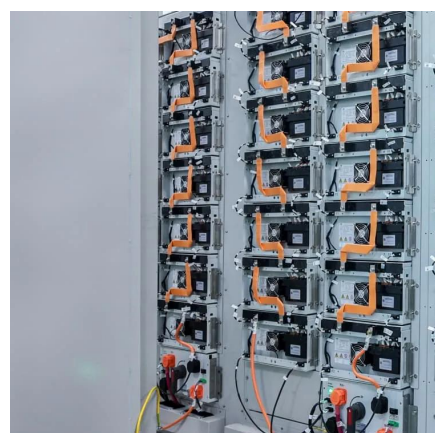
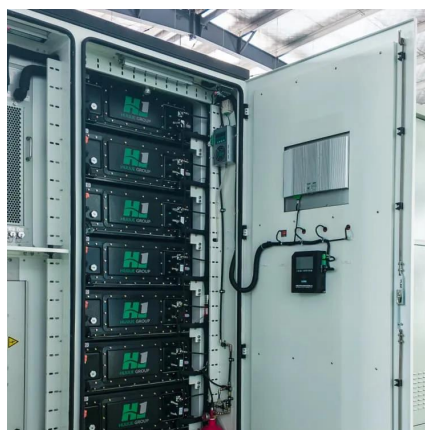
In this proposed model, an IGBT based inverter is employed to regulate the speed of a Three Phase Induction Motor (TPIM). The effectiveness of the proposed system is evaluated in both ...

[Request Quote](#)

3-Phase PWM Power Inverter Circuit

In this paper, we have studied and analyzed the dynamics of IGBT based PWM converter with subjected to different conditions like transient state, steady state feeding the RLC load. ...

[Request Quote](#)



A Novel Hybrid SPWM and SHEPWM based Three Phase Inverter ...

In this proposed model, an IGBT based inverter is employed to regulate the speed of a Three Phase Induction Motor (TPIM). The effectiveness of the proposed system is evaluated in both ...

[Request Quote](#)

3-Phase PWM Power Inverter Circuit



The inverter design circuit adopts voltage three-phase bridge inverter circuit, its schematic diagram shown in figure 3. Inverter circuit switching devices are made of full-controlled device ...

[Request Quote](#)



[Three-phase inverter reference design for 200-480VAC ...](#)

This reference design uses a converter inverter brake (CIB) IGBT module to implement the three phase inverter. A CIB IGBT module has a diode based three phase rectifier front end, IGBT ...

[Request Quote](#)





Contact Us

For catalog requests, pricing, or partnerships, please visit:

<https://www.energyinnovationday.pl>

Phone: +48 22 335 1273

Email: info@energyinnovationday.pl

Scan the QR code to contact us via WhatsApp.

