



# The thickness of solar glass is several millimeters





## Overview

---

In practice, the thickness of building solar glass most frequently falls between 3.2 mm and 6.0 mm. This range is significant because it encompasses options suitable for diverse applications.

In practice, the thickness of building solar glass most frequently falls between 3.2 mm and 6.0 mm. This range is significant because it encompasses options suitable for diverse applications.

The thickness of building solar glass typically ranges from 3.2 mm to 6.0 mm, depending on numerous factors such as design specifications, energy requirements, and structural considerations. The choice of thickness influences not only energy performance but also aesthetic aspects of the.

The typical thickness for these rigid, framed modules falls within a narrow range of 30 millimeters to 40 millimeters, translating to approximately 1.2 to 1.6 inches. A common measurement found across many modern manufacturers is 35 millimeters, which balances structural integrity with material.

Solar Photovoltaic Glass Panel Specifics and compatibility with project requirements. The thickness of PV glass plays a crucial role in its structural integrity and performance: Range: Common thicknesses range from 3.2mm to 6mm for individual properties that surpass conventional glass. This innovative.

Photovoltaic double-glass thicknesses range from 3.2mm to 6mm for individual glass panes. Configurations: Total thickness varies based on the configuration (single laminated, mal performance and compatibility with project requirements. The thickness of PV glass plays a crucial role in its.

The thickness of each glass layer matters a lot. It affects: Here are the main options we offer at Couleenergy: The 2.0mm + 3.2mm Option: Best of Both Worlds?

Many of our customers love the 2.0mm front + 3.2mm back configuration. Here's why: The thin 2.0mm front glass lets more sunlight pass.

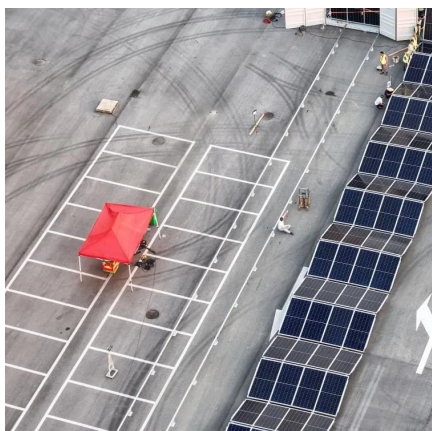
What is the thickness of PV glass?



The thickness of PV glass plays a crucial role in its structural integrity and performance: Range: Common thicknesses range from 3.2mm to 6mm for individual glass panes. Configurations: Total thickness varies based on the configuration (single laminated, double).



## The thickness of solar glass is several millimeters



### [Double Glass Solar Panel Thickness Guide: Find ...](#)

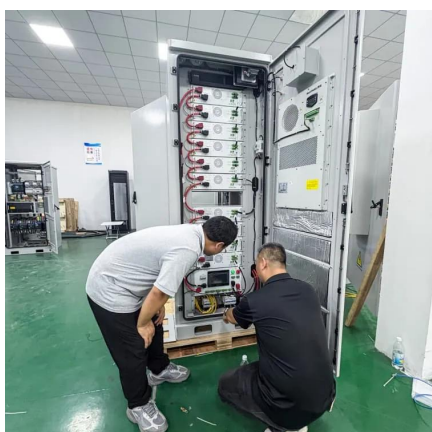
Compare double glass solar panel thickness configurations for international projects. Includes custom small-format options under 200W ...

[Request Quote](#)

### How Much Glass Does a Photovoltaic Panel Have? Let's Crack ...

Here's the kicker: Thicker glass doesn't always mean better. The 2023 NREL study found that 4mm glass only improves hail resistance by 12% compared to 3.2mm, while adding 18% more ...

[Request Quote](#)



### [How Glass Thickness And Composition Affect Solar Panel ...](#)

Explore how glass thickness and composition impact solar panel efficiency. This technical analysis covers the balance between durability and light transmission, and the ...

[Request Quote](#)

### What is the standard thickness of solar tempered glass for solar ...

In conclusion, the standard thickness of solar tempered glass for solar panels typically ranges from 3mm to 4mm, with each option having its own advantages and disadvantages.



[Request Quote](#)



### **Double Glass Solar Panel Thickness Guide: Find Your Perfect ...**

Compare double glass solar panel thickness configurations for international projects. Includes custom small-format options under 200W for specialized global applications.

[Request Quote](#)

### **How Thick Are Solar Panels? Standard & Thin-Film**

The typical thickness for these rigid, framed modules falls within a narrow range of 30 millimeters to 40 millimeters, translating to approximately 1.2 to 1.6 inches.

[Request Quote](#)



### **How thick is the building solar glass? , NenPower**

The thickness of building solar glass typically ranges from 3.2 mm to 6.0 mm, depending on numerous factors such as design ...

[Request Quote](#)

### **How thick is the glass on poly solar**



## [modules? - greenproekt](#)

First off, the glass on most poly solar modules typically ranges between **3.2 millimeters (mm)** and **4 mm** in thickness. This isn't a random choice--it's a carefully calculated balance ...

[Request Quote](#)



## **Photovoltaic double-glass panel glass thickness requirements**

The thickness of the front glass generally used for this type of structure is 3.2 mm. Dual-glass type modules (also called double glass or glass-glass) are made up of two glass surfaces, on the

[Request Quote](#)



## [How Glass Thickness And Composition Affect ...](#)

Explore how glass thickness and composition impact solar panel efficiency. This technical analysis covers the balance between ...

[Request Quote](#)



## [Solar Photovoltaic Glass Panel Specifications](#)

Builders that intend to meet both the solar PV and solar water heating RERH specifications should detail the location and the square footage of the roof area to accommodate both technologies.

[Request Quote](#)



## [How thick is the building solar glass? .](#)



## [NenPower](#)

The thickness of building solar glass typically ranges from 3.2 mm to 6.0 mm, depending on numerous factors such as design specifications, energy requirements, and ...

[Request Quote](#)



## [Thickness of photovoltaic single glass panel](#)

In 90% of situations, for 60-cell solar panels, the solar glass makes up the majority of the solar laminate thickness, measuring 3.2mm. Other parts include the solar cells, the solar laminate's ...

[Request Quote](#)



## Contact Us

---

For catalog requests, pricing, or partnerships, please visit:

<https://www.energyinnovationday.pl>

Phone: +48 22 335 1273

Email: [info@energyinnovationday.pl](mailto:info@energyinnovationday.pl)

Scan the QR code to contact us via WhatsApp.

