



The pressure of the energy storage gas slow charging device is low





Overview

Slow accumulator response or insufficient energy storage typically stems from:
Undersized nitrogen supply cylinders: Verify cylinder pressure exceeds accumulator requirements by 20%. Blocked charging lines: Disconnect and test gas flow without the accumulator.

Slow accumulator response or insufficient energy storage typically stems from:
Undersized nitrogen supply cylinders: Verify cylinder pressure exceeds accumulator requirements by 20%. Blocked charging lines: Disconnect and test gas flow without the accumulator.

Excessive pressure drop after charging often indicates leaks or temperature-related inconsistencies. Inspect bladder/diaphragm integrity using a soap-water solution on gas valve threads and seals. Bubbles reveal leakage points. For thermal issues, apply the ideal gas law: where $P_1 V_1 / T_1 = P_2 V_2 / T_2$.

The gas pressure within an energy storage device is crucial for its operation, and it can vary significantly depending on several factors: 2. It typically ranges between 1 to 30 bar in many applications, heavily influenced by the type of technology employed; 3. In compressed gas systems, higher.

What is the reason for the characteristic shape of Ragone curves?

.

Here are the key considerations to ensure efficient nitrogen charging in energy storage devices: 1. Pre-Charge Pressure Accuracy Importance: The pre-charge pressure is vital as it directly affects the accumulator's performance. Too low or too high pre-charge pressure can lead to inefficient.

Another modular low-pressure compressed gas energy storage system will be examined. The system is a closed-loop one, drawing carbon dioxide potentially from underground caverns into a number of pressurized cylinders where CO₂ is kept at pressures 2, 2.5, and 3 bar. Which energy storage system has.

Let's face it - when was the last time you got excited about working pressure in energy storage systems?



If you're like most people, probably never. But here's the kicker: this unsung hero determines whether your fancy battery system becomes the next big thing or a very expensive paperweight. Our. How is air storage pressure maintained during charging and discharging?

For IA-CAES, the constant pressure in the air storage device is maintained during the charging and discharging process, as shown in Fig. 7 (c). A constant storage pressure is often achieved by applying a certain depth of water pressure and the air storage device is often constructed underwater.

Which air storage system has the lowest power cost?

Compared with CAES based on other air storage devices, CAES based on natural underground caverns has the lowest power cost of 850–1000 \$/kW. This is because natural underground caverns already exist, so construction costs are much lower than other artificial air storage devices.

What is a fully discharged power supply (SoC)?

The amount of energy stored in a device as a percentage of its total energy capacity Fully discharged: SoC = 0% Fully charged: SoC = 100% Depth of discharge (DoD) The amount of energy that has been removed from a device as a percentage of the total energy capacity K. Webb ESE 471 6 Capacity.

What causes a slow accumulator response?

Slow accumulator response or insufficient energy storage typically stems from:
Undersized nitrogen supply cylinders: Verify cylinder pressure exceeds accumulator requirements by 20%. Blocked charging lines: Disconnect and test gas flow without the accumulator. Flow restrictions <2 CFM indicate clogged filters or kinked hoses.



The pressure of the energy storage gas slow charging device is low



[Troubleshooting common accumulator charging issues](#)

Excessive pressure drop after charging often indicates leaks or temperature-related inconsistencies. Inspect bladder/diaphragm integrity using a soap-water solution on ...

[Request Quote](#)

Hydraulic Characteristics in an Isobaric Compressed Air Energy Storage

During charging, gas pressure, density, and temperature increase linearly, while during discharging, they decrease linearly. This study confirms that the air and water have clear ...

[Request Quote](#)



Energy storage

Energy storage is the capture of energy produced at one time for use at a later time [1] to reduce imbalances between energy demand and energy production. A device that stores energy is ...

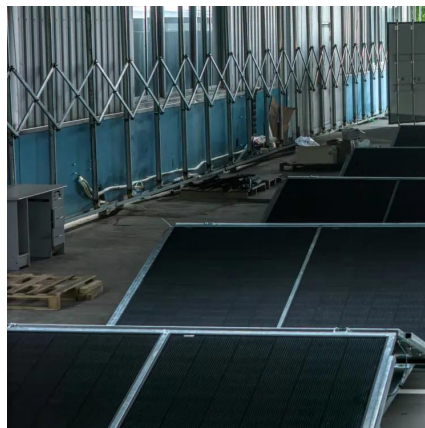
[Request Quote](#)

The pressure of the energy storage gas slow charging device is low

Another modular low-pressure compressed gas energy storage system will be examined. The system is a closed-loop one, drawing carbon dioxide potentially from underground caverns into ...



[Request Quote](#)



Key Considerations for Efficient Nitrogen Charging in Energy Storage

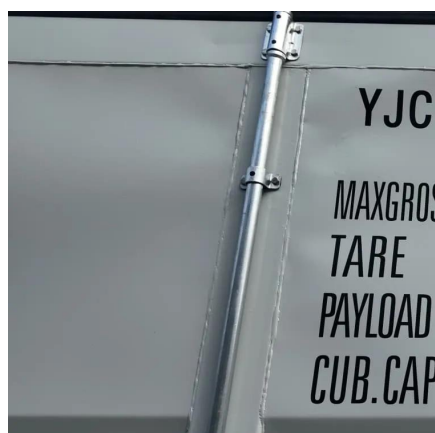
Too low or too high pre-charge pressure can lead to inefficient operation and potential damage to the accumulator. Consideration: Use a reliable pressure gauge to ensure ...

[Request Quote](#)

What is the gas pressure of the energy storage device?

Gas pressure significantly impacts the efficiency of energy storage devices, particularly those that rely on compressed gases for energy storage and retrieval. Higher gas ...

[Request Quote](#)



Experimental investigation on charging and discharging ...

The results indicate that the PE could be ideal PCM utilized in shell-tube typed thermal energy storage device. The enhancement of fin number and fin height can largely ...

[Request Quote](#)

SECTION 2: ENERGY STORAGE



FUNDAMENTALS

(DoD) The amount of energy that has been removed from a device as a percentage of the total energy capacity

[Request Quote](#)



Current status of thermodynamic electricity storage: Principle

Three typical thermodynamic electricity storage technologies are reviewed. Principle, structures, storage devices, demonstrations and costs are summarized. A ...

[Request Quote](#)

Troubleshooting common accumulator charging ...

Excessive pressure drop after charging often indicates leaks or temperature-related inconsistencies. Inspect bladder/diaphragm ...

[Request Quote](#)



Energy storage

Energy storage is the capture of energy produced at one time for use at a later time [1] to reduce imbalances between energy demand and energy ...

[Request Quote](#)

Hydraulic Characteristics in an



Isobaric Compressed Air Energy ...

During charging, gas pressure, density, and temperature increase linearly, while during discharging, they decrease linearly. This study confirms that the air and water have clear ...

[Request Quote](#)



Key Considerations for Efficient Nitrogen Charging in Energy ...

Too low or too high pre-charge pressure can lead to inefficient operation and potential damage to the accumulator. Consideration: Use a reliable pressure gauge to ensure ...

[Request Quote](#)

Understanding the Working Pressure of Energy Storage Devices: ...

Getting pressure just right is crucial - too low and your system underperforms, too high and you're playing with literal fire. Modern systems like Tesla's Powerpack use dynamic ...

[Request Quote](#)



What is the gas pressure of the energy storage ...

Gas pressure significantly impacts the efficiency of energy storage devices, particularly those that rely on compressed gases for ...

[Request Quote](#)



Contact Us

For catalog requests, pricing, or partnerships, please visit:

<https://www.energyinnovationday.pl>

Phone: +48 22 335 1273

Email: info@energyinnovationday.pl

Scan the QR code to contact us via WhatsApp.

