



The maximum wattage of solar energy





The maximum wattage of solar energy



[How Much Energy Does A Solar Panel Produce?](#)

Most residential panels in 2025 are rated 250-550 watts, with 400-watt models becoming the new standard. A 400-watt panel can generate roughly 1.6-2.5 kWh of energy ...

[Request Quote](#)

[Highest Watt Residential Solar Panels 2025 \[Complete Guide\]](#)

Several factors limit most residential solar panels to around 550W maximum for standard installations: Commercial and utility-scale panels can reach 700W+ because they're ...

[Request Quote](#)



[Solar Panel Wattage Explained: How Many Watts Do You Need?](#)

In simpler terms, a panel's wattage rating tells you its maximum power output under ideal conditions. For example: A 100-watt panel can produce 100 watts per hour in direct ...

[Request Quote](#)

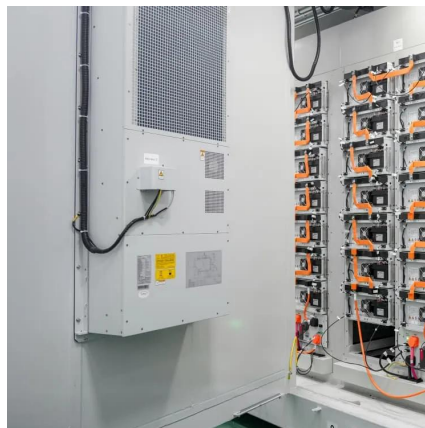


[Mastering Solar Panel Watts: A Complete Guide](#)

The amount of wattage your solar panels produce directly affects the energy production and cost-effectiveness of your system. Higher wattage panels, typically those with 300-400 watts or ...



[Request Quote](#)



[Understanding Solar Panel Wattage Ratings](#)

Simply put, it indicates the maximum amount of electricity a solar panel can produce under ideal conditions, measured in watts (W). For example, a 300-watt panel can generate up ...

[Request Quote](#)



[How Much Energy Does A Solar Panel Produce?](#)

Most residential panels in 2025 are rated 250-550 watts, with 400-watt models becoming the new standard. A 400-watt panel can ...

[Request Quote](#)



[What is the maximum wattage of solar energy? , NenPower](#)

Through a multifaceted exploration, it is clear that understanding and optimizing the maximum wattage from solar energy hinge upon several factors, including technology, ...

[Request Quote](#)



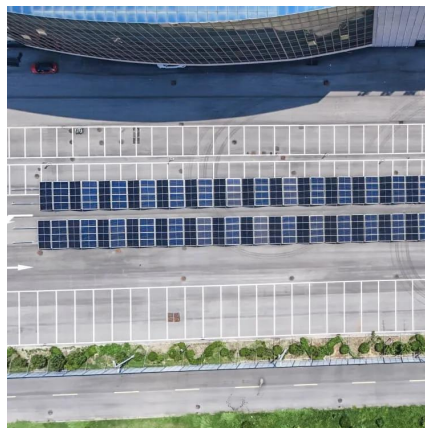
[PV Panel Ratings Explained: What is the](#)



[Max Wattage Today?](#)

The most common and immediate measure of a solar panel's power output is its Wattage Rating, often referred to as Peak Power or Maximum Power Point (Pmax). This value ...

[Request Quote](#)



[Solar Panel Wattage & Output Explained](#)

Most residential solar panels in 2025 are rated between 350W and 480W, while commercial modules can exceed 600W. How do manufacturers determine wattage? They test ...

[Request Quote](#)

[How Much Energy Does A Solar Panel Produce? , EnergySage](#)

Most solar panels have cells that can convert 17-23% of the sunlight that hits them into usable solar energy.

[Request Quote](#)



[Highest Watt Residential Solar Panels 2025 ...](#)

Several factors limit most residential solar panels to around 550W maximum for standard installations: Commercial and utility-scale ...

[Request Quote](#)

[Highest Wattage Solar Panels:Everything](#)



[You Need to Know](#)

In the commercial sector, the highest wattage solar panels currently available on the market are 700W Wattage Solar Panels. These panels, featuring a remarkable 144 half-cut solar cells, ...

[Request Quote](#)





Contact Us

For catalog requests, pricing, or partnerships, please visit:

<https://www.energyinnovationday.pl>

Phone: +48 22 335 1273

Email: info@energyinnovationday.pl

Scan the QR code to contact us via WhatsApp.

