



# The inverter automatically adjusts the input voltage





## Overview

---

A power inverter, inverter, or invertor is a device or circuitry that changes (DC) to (AC). The resulting AC frequency obtained depends on the particular device employed. Inverters do the opposite of which were originally large electromechanical devices converting AC to DC.

An inverter is a converter that converts DC power (from a battery or storage battery) into fixed-frequency, constant-voltage, or frequency-regulated and voltage-regulated alternating current. It consists of an inverter bridge, control logic, and filter circuit.

An inverter is a converter that converts DC power (from a battery or storage battery) into fixed-frequency, constant-voltage, or frequency-regulated and voltage-regulated alternating current. It consists of an inverter bridge, control logic, and filter circuit.

Inverters can maintain stable output voltage through internal control algorithms and power regulation mechanisms. Specifically: Constant Voltage Output: Inverters automatically adjust their output voltage based on load changes, ensuring a consistent voltage level. Even if the input voltage or load.

The use of an inverter to adjust the speed and acceleration of an AC motor increases the range of applications of the motor compared with a motor that operates at a constant speed. The speed of a motor is normally measured as the number of revolutions per minute (rpm). The acceleration rate is.

To set output voltage of inverter - This is normally 230 Vac. Possible values 210V ~ 245V. 2. Used to enable/disable the internal ground relay functionality. Connection between N and PE during inverter operation. - The ground relay is useful when an earth-leakage circuit-breaker is part of the.

Overload Protection: The inverter intelligently monitors the load current, and when it exceeds the rated power continuously, the inverter will shut down, accompanied by an alarm and indicator lights. Let's say you have installed an inverter with a rated capacity of 3 kilowatts (kW). Then, you.

The input voltage, output voltage and frequency, and overall power handling depend on the design of the specific device or circuitry. The inverter does not produce any power; the power is provided by the DC source. A power inverter can



be entirely electronic or a combination of mechanical effects.

An inverter is a converter that converts DC power (from a battery or storage battery) into fixed-frequency, constant-voltage, or frequency-regulated and voltage-regulated alternating current. It consists of an inverter bridge, control logic, and filter circuit. It consists of semiconductor power.



## The inverter automatically adjusts the input voltage



### Protection and Monitoring Functions of Inverters: Ensuring the ...

Once the input voltage exceeds the safe range, the inverter will automatically disconnect the power supply or reduce the output voltage to protect the system from voltage ...

[Request Quote](#)

### [Advanced Inverter Drive Parameter Settings](#)

Energy-Saving Mode for Reduced Power Consumption Many inverter drives have built-in energy optimization features that ...

[Request Quote](#)



### [Introduction to inverters: structure, operating ...](#)

Maximum Power Point Tracking (MPPT): In solar photovoltaic systems, the inverter is able to dynamically adjust the input voltage to ...

[Request Quote](#)



## Power inverter

A power inverter, inverter, or invertor is a power electronic device or circuitry that changes direct current (DC) to alternating current (AC). [1] The resulting AC frequency obtained depends on ...

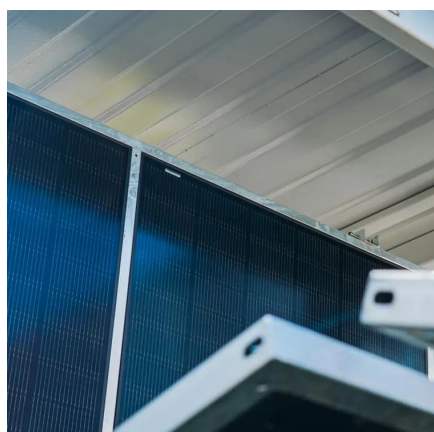
[Request Quote](#)



## How Does a Solar Inverter Synchronize with Grid? Tips Inside

The inverter adjusts the voltage, frequency, and phase of your solar electricity so it aligns perfectly with the grid's parameters. This ensures seamless power transfer without ...

[Request Quote](#)



## [How does an inverter help stabilize voltage fluctuations?](#)

Constant Voltage Output: Inverters automatically adjust their output voltage based on load changes, ensuring a consistent voltage level. Even if the input voltage or load fluctuates, the ...

[Request Quote](#)



## [How Does a Solar Inverter Synchronize with Grid?](#)

The inverter adjusts the voltage, frequency, and phase of your solar electricity so it aligns perfectly with the grid's parameters. This ...

[Request Quote](#)



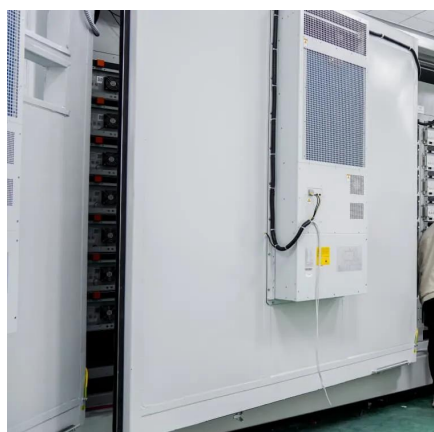
## Introduction to inverters: structure,



## operating principles and

Maximum Power Point Tracking (MPPT): In solar photovoltaic systems, the inverter is able to dynamically adjust the input voltage to maximize the output power of the ...

[Request Quote](#)



## Protection and Monitoring Functions of Inverters: ...

Once the input voltage exceeds the safe range, the inverter will automatically disconnect the power supply or reduce the output ...

[Request Quote](#)

## Advanced Inverter Drive Parameter Settings

Energy-Saving Mode for Reduced Power Consumption Many inverter drives have built-in energy optimization features that automatically adjust voltage and frequency to ...

[Request Quote](#)



## Solar Integration: Inverters and Grid Services Basics

Inverters are just one example of a class of devices called power electronics that regulate the flow of electrical power. Fundamentally, an inverter accomplishes the DC-to-AC conversion by ...

[Request Quote](#)

## CSM\_Inverter\_TG\_E\_1\_1



A function that automatically controls the output voltage by detecting an output current of an inverter to increase the torque when it is insufficient at low speeds.

[Request Quote](#)



## Power inverter

Overview  
Input and output  
Batteries  
Applications  
Circuit description  
Size  
History  
See also

A power inverter, inverter, or invertor is a power electronic device or circuitry that changes direct current (DC) to alternating current (AC). The resulting AC frequency obtained depends on the particular device employed. Inverters do the opposite of rectifiers which were originally large electromechanical devices converting AC to DC.

[Request Quote](#)

## 9. Inverter Settings

To set the voltage at which the inverter restarts after low voltage shut-down. - To prevent rapid fluctuation between shut-down and start up, it is recommended that this value be set at least ...

[Request Quote](#)



## [Regulating Voltage: Recommendations for Smart Inverters](#)

This report from GridLab provides an introduction to voltage regulation concepts, including advantages and disadvantages of various control modes. The authors include ...

[Request Quote](#)



## [Solar Integration: Inverters and Grid Services Basics](#)

Inverters are just one example of a class of devices called power electronics that regulate the flow of electrical power. Fundamentally, an inverter ...

[Request Quote](#)





## Contact Us

---

For catalog requests, pricing, or partnerships, please visit:

<https://www.energyinnovationday.pl>

Phone: +48 22 335 1273

Email: [info@energyinnovationday.pl](mailto:info@energyinnovationday.pl)

Scan the QR code to contact us via WhatsApp.

