



The functions of the base station communication module include





Overview

The base station subsystem (BSS) is the section of a traditional cellular telephone network which is responsible for handling traffic and signaling between a mobile phone and the network switching subsystem. The BSS carries out transcoding of speech channels, allocation of radio channels to mobile phones, and reception over the air and many other functions.

The base station's RF circuitry is housed in a small outdoor module known as a remote radio head (RRH) or remote radio unit (RRU). RRH performs all RF functions such as transmit and receive functionality, filtering and amplification.

The base station's RF circuitry is housed in a small outdoor module known as a remote radio head (RRH) or remote radio unit (RRU). RRH performs all RF functions such as transmit and receive functionality, filtering and amplification.

The idea of base stations is anchored in their function to provide coverage, capacity, and connectivity, hence allowing for extending the working capabilities of mobile phones and other radio gear. What is Base Station?

What is Base Station?

A base station represents an access point for a wireless network.

The base station subsystem (BSS) is the section of a traditional cellular telephone network which is responsible for handling traffic and signaling between a mobile phone and the network switching subsystem. The BSS carries out transcoding of speech channels, allocation of radio channels to mobile.

A base station is a critical component in a telecommunications network. A fixed transceiver that acts as the central communication hub for one or more wireless mobile client devices. In the context of cellular networks, it facilitates wireless communication between mobile devices and the core.

A base station plays a pivotal role in the realm of telecommunications, acting as the cornerstone of connectivity. It enables seamless communication by linking various wireless devices to broader networks, ensuring that data flows efficiently from one point to another. A base station is an integral part of the network.

Base stations are critical components in wireless communication networks, serving as the intermediary between mobile devices and the core network. They play a



vital role in ensuring seamless connectivity, efficient data transmission, and reliable communication services. This blog explores the.

A base station controller (BSC) plays a pivotal role in mobile telecommunications networks, serving as the intermediary between the mobile phones and the network's core within the broader context of a cellular network. It manages the radio resources, ensuring seamless handovers, and controls.



The functions of the base station communication module include



[Exploring GSM Network Components: Functions and Roles](#)

Base Station Controller (BSC): The BSC manages multiple BTSs, handling radio resources, handovers, and frequency hopping. It also connects to the NSS for call processing ...

[Request Quote](#)

Understanding Base Stations: The Backbone of Wireless Communication

In cellular networks, a base station typically consists of antennas, a transmitter/receiver system, and a base station controller (BSC). The base station is ...

[Request Quote](#)



What Is A Base Station?

It enables seamless communication by linking various wireless devices to broader networks, ensuring that data flows efficiently from one point to another.

[Request Quote](#)

[Understanding Base Stations: The Backbone of Wireless ...](#)

In cellular networks, a base station typically consists of antennas, a transmitter/receiver system, and a base station controller (BSC). The base station is ...



[Request Quote](#)



Demystifying Base Station Subsystem: A US Guide to Cellular Tech

Base Transceiver Station (BTS): This is the radio equipment, often seen as the antennas and associated hardware on cell towers. It's responsible for transmitting and ...

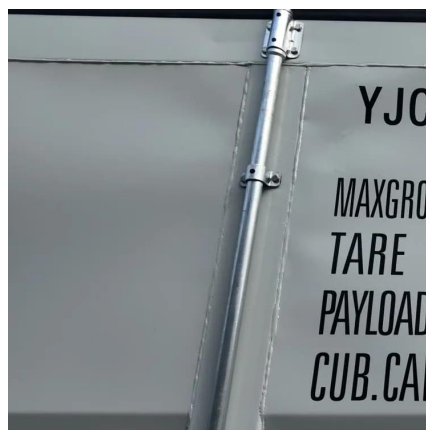
[Request Quote](#)

Base station subsystem

OverviewBase transceiver stationBase station controllerPacket control unitBSS interfacesSee also

The base station subsystem (BSS) is the section of a traditional cellular telephone network which is responsible for handling traffic and signaling between a mobile phone and the network switching subsystem. The BSS carries out transcoding of speech channels, allocation of radio channels to mobile phones, paging, transmission and reception over the air interface and many othe...

[Request Quote](#)



Exploring GSM Network Components: Functions ...

Base Station Controller (BSC): The BSC manages multiple BTSs, handling radio resources, handovers, and frequency hopping. It ...

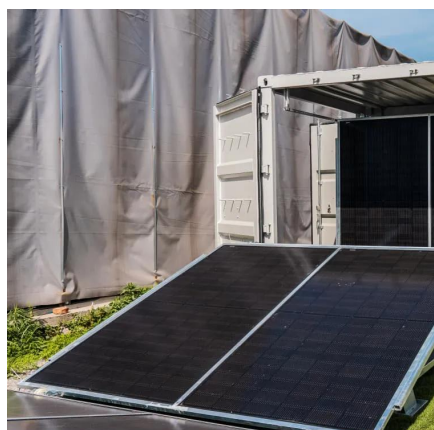


[Request Quote](#)

Base Stations

Base stations form a key part of modern wireless communication networks because they offer some crucial advantages, ...

[Request Quote](#)



[What Is a Base Station? Definition and How It Works](#)

Its function is to transmit and receive radio signals to and from wireless client devices. The base station acts as a converter, taking radio waves from a mobile phone and ...

[Request Quote](#)

Base station subsystem

The base station subsystem (BSS) is the section of a traditional cellular telephone network which is responsible for handling traffic and signaling between a mobile phone and the network ...

[Request Quote](#)



[What is a Base Station in](#)



[Telecommunications?](#)

Discover the role and functionality of a base station in telecommunications networks. Learn how these critical components manage communication between mobile devices and the network, ...

[Request Quote](#)

Base Station Controller

It manages the radio resources, ensuring seamless handovers, and controls multiple base transceiver stations (BTS). Base stations are the fundamental units of wireless ...

[Request Quote](#)



[What is a Base Station in Telecommunications?](#)

Discover the role and functionality of a base station in telecommunications networks. Learn how these critical components manage communication ...

[Request Quote](#)

What Is the Role of a Base Station in Wireless Communication?

Base stations are critical components in wireless communication networks, serving as the intermediary between mobile devices and the core network. They play a vital role in ...

[Request Quote](#)



Base Stations



Base stations form a key part of modern wireless communication networks because they offer some crucial advantages, such as wide coverage, continuous communications and ...

[Request Quote](#)



Contact Us

For catalog requests, pricing, or partnerships, please visit:

<https://www.energyinnovationday.pl>

Phone: +48 22 335 1273

Email: info@energyinnovationday.pl

Scan the QR code to contact us via WhatsApp.

