



# The distance between the solar container battery cabinet and the cabinet in the computer room





## Overview

---

According to NFPA 855, individual energy storage system units should generally be separated by at least three feet, unless the manufacturer has conducted large-scale fire testing (part of UL 9540A) to prove a smaller distance is safe. This prevents a fault in one unit from spreading.

According to NFPA 855, individual energy storage system units should generally be separated by at least three feet, unless the manufacturer has conducted large-scale fire testing (part of UL 9540A) to prove a smaller distance is safe. This prevents a fault in one unit from spreading.

Spaces about battery systems shall comply with 110.26. Working space shall be measured from the edge of the battery cabinet, racks, or trays. For battery racks, there shall be a minimum clearance of 25 mm (1 in.) between a cell container and any wall or structure on the side not requiring access.

sted to UL 9540. According to UL 9540 the separation between batteries should e 3ft (91.4 cm). UL 9540 also provides that equipment evaluated to UL 9540A with a written report from a nationally recognized testing laboratory (NRTL), such as ETL, can be permitted to be installed with less than 3ft.

The spacing requirement for energy storage cabinets is influenced by several critical factors that are essential for safety and operational efficiency. 1. Adequate airflow is crucial, preventing overheating during operation. 2. Compliance with regulatory standards ensures safety and legality.

Best Practice: Position the battery within 5 meters of the inverter and main panel to reduce voltage loss and installation costs. Use high-quality, low-resistance cables for optimal performance. Also read: [Can Solar Batteries Be Installed Outside?](#)

Key Considerations Indoor: Ensure proper.

They consider systems between 1 kilowatt-hour (kWh) and 20 kWh to be residential – any system larger than 20 kWh must comply with commercial installation requirements. If your system is 20 kWh or smaller, you can safely install your solar battery in the following locations, according to NFPA 855:.



Let's talk about the safety distance of energy storage containers – the unsung hero of renewable energy systems. Spoiler: It's not just about avoiding fireworks. Who Cares About Safety Distances Anyway?

This article isn't just for hardcore engineers. We're breaking it down for: Remember when safety. How much space do you need for a battery system?

Spaces about battery systems shall comply with 110.26. Working space shall be measured from the edge of the battery cabinet, racks, or trays. For battery racks, there shall be a minimum clearance of 25 mm (1 in.) between a cell container and any wall or structure on the side not requiring access for maintenance.

What is the minimum clearance for a battery rack?

For battery racks, there shall be a minimum clearance of 25 mm (1 in.) between a cell container and any wall or structure on the side not requiring access for maintenance. Battery stands shall be permitted to contact adjacent walls or structures, provided that the battery shelf has a free air space for not less than 90 percent of its length.

How do I choose a location for solar battery installation?

Before choosing a specific location for solar battery installation, it's essential to evaluate a range of technical and environmental factors. These directly affect safety, efficiency, and long-term performance: Ventilation: Adequate airflow helps regulate battery temperature and reduces the risk of overheating.

Where should a solar battery be located?

Selecting the optimal location for your solar battery is critical for safety, efficiency, and longevity in residential solar projects. 1. Garage Pros: Typically spacious, well-ventilated, and close to the inverter, minimizing cable length and voltage loss. Cons: Keep batteries clear of vehicles; may require a fire-rated enclosure.



## The distance between the solar container battery cabinet and the cab



### [Where to install solar batteries in your home](#)

There are several factors, such as weather, climate, and battery weight, that determine how and where your battery can be installed. Check out the EnergySage ...

[Request Quote](#)

### [Where to install solar batteries in your home](#)

There are several factors, such as weather, climate, and battery weight, that determine how and where your battery can be ...

[Request Quote](#)



### **EG4 BESS Spacing**

The following document clarifies BESS (Battery Energy Storage System) spacing requirements for the EG4 WallMount batteries / rack mount six slot battery cabinet installations.

[Request Quote](#)



### **480.9 Battery Locations.**

Working space shall be measured from the edge of the battery cabinet, racks, or trays. For battery racks, there shall be a minimum clearance of 25 mm (1 in.) between a cell container and any ...

[Request Quote](#)



### 480.9 Battery Locations.

Working space shall be measured from the edge of the battery cabinet, racks, or trays. For battery racks, there shall be a minimum clearance of ...

[Request Quote](#)



### Checklist: Venting Clearance and Code Rules for Battery Cabinets

According to NFPA 855, individual energy storage system units should generally be separated by at least three feet, unless the manufacturer has conducted large-scale fire testing ...

[Request Quote](#)



### [Checklist: Venting Clearance and Code Rules for ...](#)

According to NFPA 855, individual energy storage system units should generally be separated by at least three feet, unless the ...

[Request Quote](#)



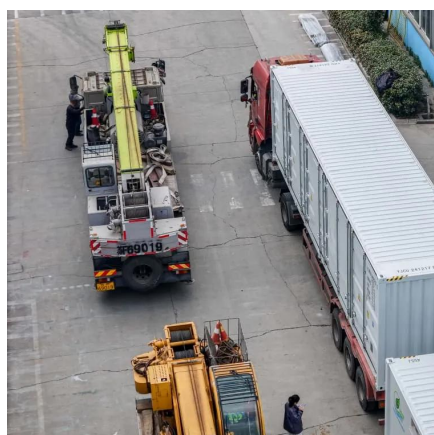
### Where Should You Store Batteries -



## Safe Battery Storage , Justrite

In determining where to store li ion batteries, the most basic requirement is to ensure that the storage location meets the following guidelines. These are minimum conditions which must be ...

[Request Quote](#)



## Solar Battery Installation Guide for Residential Projects: Finding ...

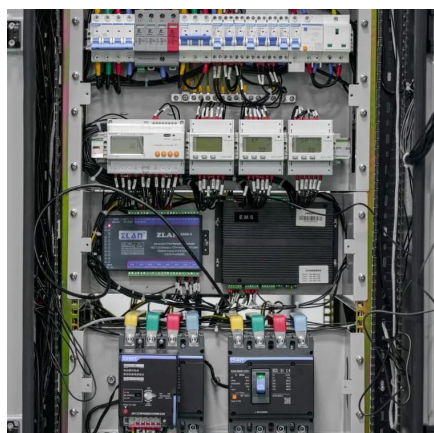
Learn how integrators choose the best location for residential solar batteries--garage, basement or outdoor enclosure--while meeting NFPA 855, EN 62619 & ...

[Request Quote](#)

## Spaces About Battery Systems , UpCodes

Spaces designated for battery systems must adhere to specific regulations regarding working space, which is measured from the battery cabinet's edge. For battery racks, a minimum ...

[Request Quote](#)



## 2018 International Solar Energy Provisions (ISEP)

Working space shall be measured from the edge of the ESS modules, battery cabinets, racks, or trays. For battery racks, there shall be a minimum clearance of 25 mm (1 in.) between a cell ...

[Request Quote](#)

## What is the spacing requirement for



## [energy ...](#)

In the realm of energy storage, especially with lithium-ion and other battery systems, one cannot underestimate the significance of ...

[Request Quote](#)



## **Safety Distance of Energy Storage Containers: What You Need ...**

A 2023 NFPA study found containers using LFP chemistry require 25% less buffer space than NMC batteries. That's the difference between storing your system in a backyard ...

[Request Quote](#)

## **What is the spacing requirement for energy storage cabinets?**

In the realm of energy storage, especially with lithium-ion and other battery systems, one cannot underestimate the significance of effective spacing. Proper distance ...

[Request Quote](#)





## Contact Us

---

For catalog requests, pricing, or partnerships, please visit:

<https://www.energyinnovationday.pl>

Phone: +48 22 335 1273

Email: [info@energyinnovationday.pl](mailto:info@energyinnovationday.pl)

Scan the QR code to contact us via WhatsApp.

