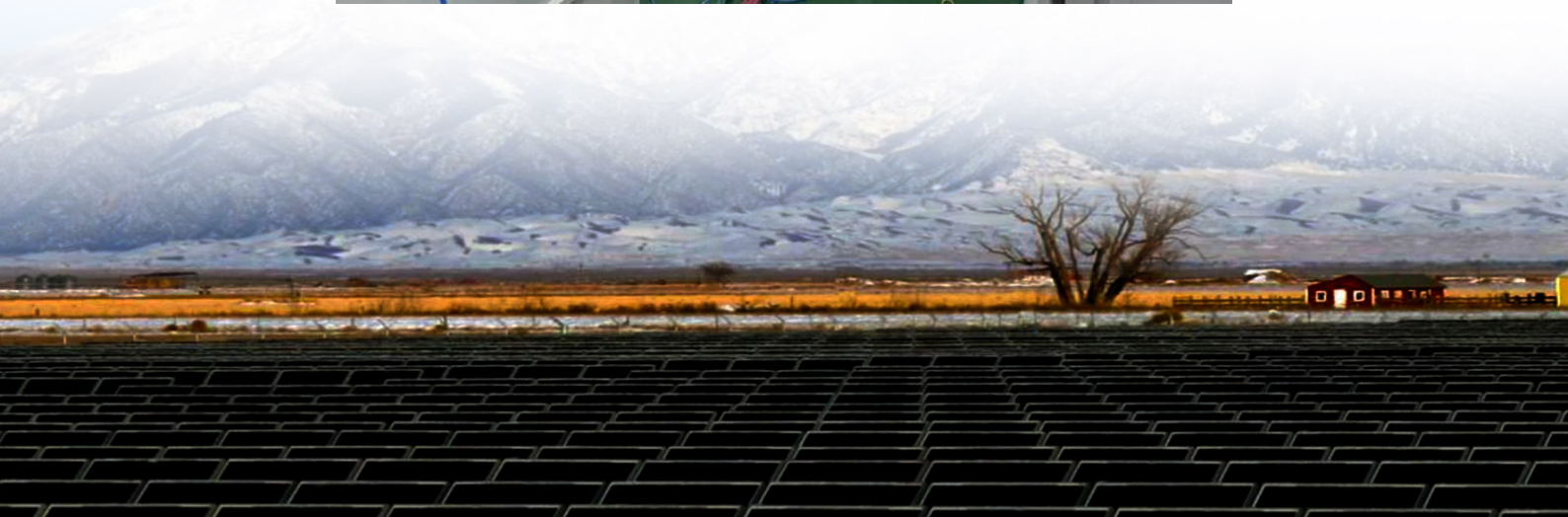




The construction plan of wind and solar complementary for the observation tower solar container communication station





Overview

This paper takes a 1500 m high mountain weather station in Yunhe County, Lishui City as an example to design a set of off-grid wind-solar complementary power generation system.

This paper takes a 1500 m high mountain weather station in Yunhe County, Lishui City as an example to design a set of off-grid wind-solar complementary power generation system.

Solar container communication wind power construction transition towards renewables is central to net-zero emissions. However, building a global power system dominated by solar and wind energy presents immense challenges. Here, we demonstrate the potential of a globally interconnected solar-wind.

The invention relates to a wind-solar complementary integrated base station with a tower room structure, which comprises a tower mast, a base station machine room, a solar power generation system, a wind power generation system and a foundation base. Compared with the prior art, the solar energy.

Wind power generation and photovoltaic power generation are one of the most mature ways in respect of the wind and solar energy development and utilization, wind and solar complementary power generation can effectively use space and time. The two forms of power generation can play their respective.

Abstract— This paper aimed at developing a procedure for the design of PV system for Mobile Tele-communication tower using the Google SketchUp Software. The output of this project was also estimated using Google SketchUp software and calculated with PV watts; The design of PV system was done with.

A technology of wind-solar hybrid power generation and mountain area, applied in photovoltaic power generation, photovoltaic power station, tower and other directions, it can solve the problems of difficulty in electrifying observation towers in mountainous areas, and achieve the effect of high.

Solar power towers are concrete towers used to concentrate heat in solar thermal power plants. They are also key to plants that generate solar power using reflectors that concentrate sunlight. These solar power plants use a large number



of sun-tracking mirrors called heliostats to reflect and.



The construction plan of wind and solar complementary for the obser



Design of Off-Grid Wind-Solar Complementary Power Generation ...

This paper describes the design of an off-grid wind-solar complementary power generation system of a 1500m high mountain weather station in Yunhe County, Lishui City.

[Request Quote](#)

[Wind-solar complementary energy tower](#)

The invention discloses a wind-solar complementary energy tower, which includes a tower frame, a photovoltaic frame and a power generation assembly.

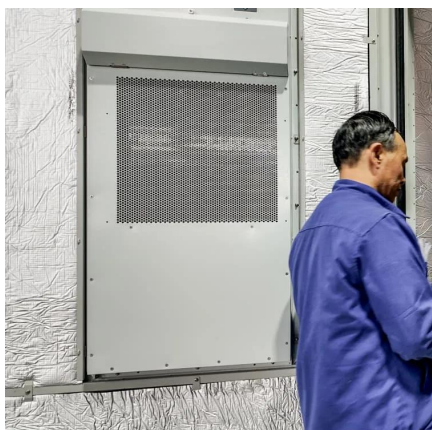
[Request Quote](#)



[Mountain area observation tower device based on wind-solar](#)

The invention discloses a mountain area observation tower device based on wind-solar complementary power generation, and relates to the technical field of power generation ...

[Request Quote](#)



Observation Tower Building Plans

Observation towers, towering structures that offer breathtaking panoramic views, are marvels of architectural engineering. Designing and constructing these iconic landmarks ...

[Request Quote](#)



[Solar container communication wind power construction 2025](#)

A globally interconnected solar-wind power system can meet future electricity demand while lowering costs, enhancing resilience, and supporting a stable, sustainable

[Request Quote](#)



CN202249000U

The invention relates to a wind-solar complementary integrated base station with a tower room structure, which comprises a tower mast, a base station machine room, a solar power

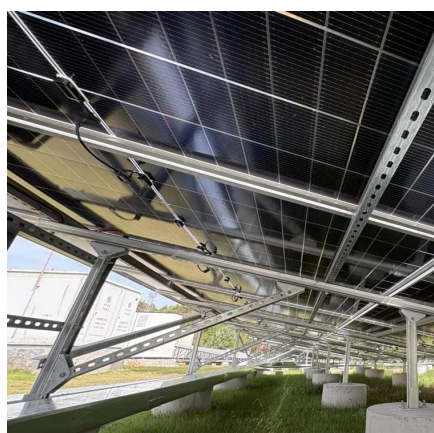
[Request Quote](#)



CN202249002U

One, wind-light complementary system has effectively utilized solar energy and wind energy, is applicable to the area of more remote, solar energy and wind energy resources rich, to

[Request Quote](#)



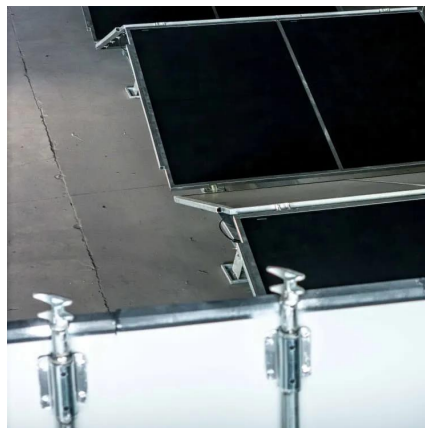
[Construction of wind and solar](#)



[complementary ...](#)

Currently, many wind farms and solar arrays are under construction in Southwest China, and the penetration of intermittent renewable energy is growing rapidly. The operating characteristics ...

[Request Quote](#)



[Design of PV System for Mobile Tele-Communication Tower](#)

This paper contains the different site survey procedure and designs by Google SketchUp that are required for the implementation of PV system for mobile Tele-communication tower.

[Request Quote](#)

[Solar towers: construction and operation, Ferrovial](#)

To design this type of construction, we used tools such as digital modeling and wind tunnel mock-up. Design is a critical phase because solar power towers, especially solar thermal power ...

[Request Quote](#)





Contact Us

For catalog requests, pricing, or partnerships, please visit:

<https://www.energyinnovationday.pl>

Phone: +48 22 335 1273

Email: info@energyinnovationday.pl

Scan the QR code to contact us via WhatsApp.

