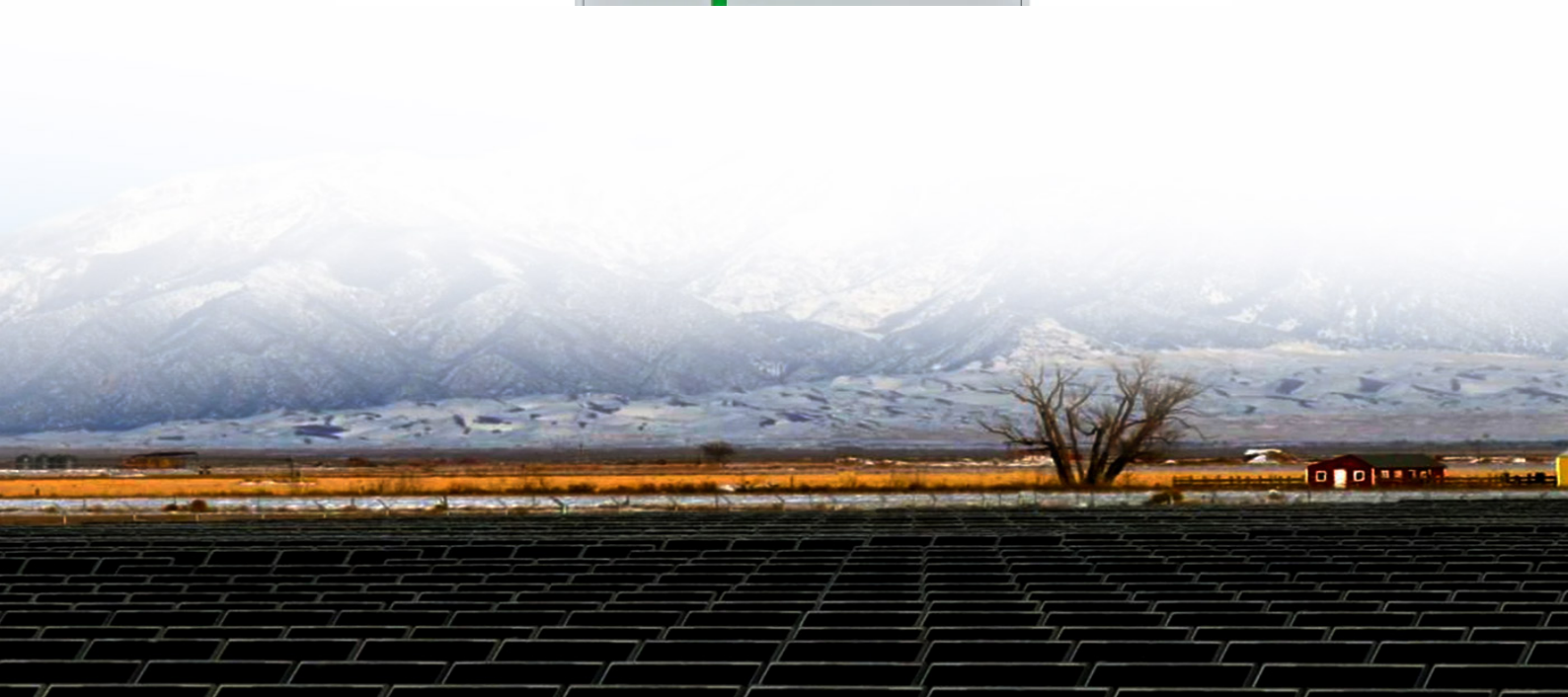




The battery cabinet fuse cannot be removed





Overview

The battery busbars and fuse kits must only be removed by a Schneider Electric-certified field service representative or service partner. Remove the batteries from the shelves. Recycle or reuse the batteries as appropriate.

The battery busbars and fuse kits must only be removed by a Schneider Electric-certified field service representative or service partner. Remove the batteries from the shelves. Recycle or reuse the batteries as appropriate.

The answer to whether a fuse can be removed with the battery connected is a qualified yes, but this allowance applies almost exclusively to low-amperage fuses in standard 12-volt automotive systems. For the vast majority of fuses found in a passenger compartment or under-hood box that are rated at.

Disconnect and remove all signal cables from the battery cabinet. See Route the Signal Cables to the Switchgear, Rack BMS, and System BMS Ports for details. Disconnect and remove power cables to the SMPS AC/DC converter (if applicable). Refer to the SMPS AC/DC converter installation manual for.

Release the tabs (x4) that attach the battery fuse box cover to the fuse box, and then remove the fuse box cover. Remove the nut (torque 13 Nm) that attaches the 12V positive battery supply terminal to the battery fuse box. The thread pitch of this nut is specific for this terminal and should not.

Changing a battery fuse is a relatively simple process that can be done at home with the right tools and a bit of knowledge. In this article, we will walk you through the steps to replace a battery fuse, including how to identify the type of fuse you need, how to locate the fuse box, and how to.

A vehicle's electrical system is protected from electrical overload damage by fuses. Disconnect the negative battery cable. Remove the nuts shown in the picture below. Replace the fuse with a new one of the same rating. Reinstall in the reverse order of removal. If the battery fuse is blown, have.

Before the replacement, ensure that the loads are not affected or a written consent is obtained from the customer. Turn off the battery circuit breaker in the battery cabinet where the old BCU is located. Power off the cabinet: Press and hold the



POWER ON/OFF button on the BCU for more than 5s.



The battery cabinet fuse cannot be removed



Replacing a Fuse

Turn off the battery circuit breaker in the battery cabinet where the old BCU is located. Power off the cabinet: Press and hold the POWER ON/OFF button on the BCU for more than 5s until the ...

[Request Quote](#)

[Can You Remove a Fuse With the Battery Connected?](#)

The answer to whether a fuse can be removed with the battery connected is a qualified yes, but this allowance applies almost exclusively to low-amperage fuses in standard ...

[Request Quote](#)



U-ENM00044

This battery cabinet is equipped with four swivel casters with leveling legs. Use the casters to move the battery cabinet into position and use the leveling feet to make sure the cabinet is ...

[Request Quote](#)

[Decommission or Move the Battery Cabinet to a New Location](#)

Contact Schneider Electric for removal of the battery busbars and fuse kits. The battery busbars and fuse kits must only be removed by a Schneider Electric-certified field service ...



[Request Quote](#)



Battery fuse

Replace the fuse with a new one of the same rating. Reinstall in the reverse order of removal. If the battery fuse is blown, have the vehicle checked by an authorized Kia dealer. Visually ...

[Request Quote](#)

[How to Change a Battery Fuse: A Step-by-Step Guide](#)

In this article, we will walk you through the steps to replace a battery fuse, including how to identify the type of fuse you need, how to locate the fuse box, and how to replace the fuse safely.

[Request Quote](#)



Replace A Burned-Out Fuse In 5 Easy Steps , Nate Wade Subaru

Look for a fuse puller designed for safe and easy removal; many modern cars include one in the fuse box under the hood or dash. If a dedicated puller isn't available, needle ...

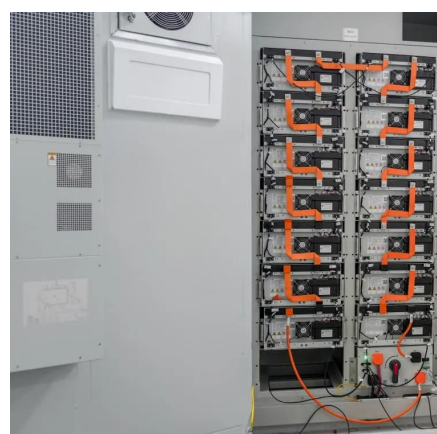
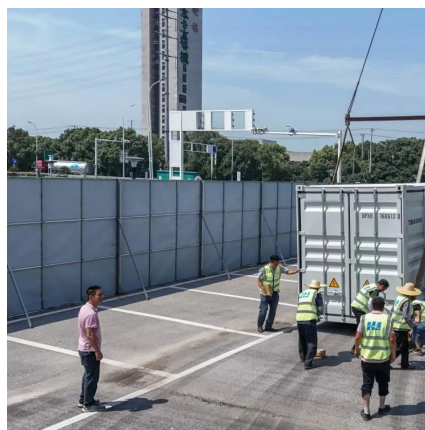
[Request Quote](#)

Fusebox



Remove the battery fuse box wire separator from the fuse box. Release the tabs on the front and rear of the wire separator, slide away and lift it up from the battery fuse box to release it.

[Request Quote](#)



[ENGINE FUSE BOX CORROSION by Dicktator](#)

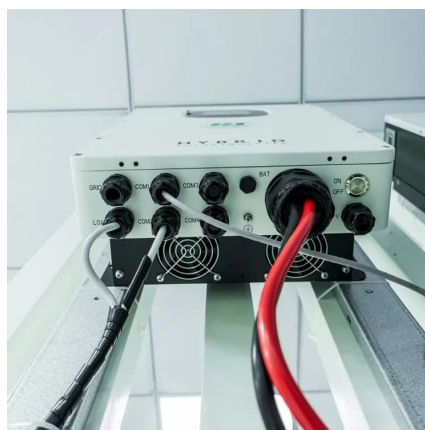
REMOVAL Engine fuse box subject to wire failure and internal fuse/pin corrosion.

[Request Quote](#)

[Replace A Burned-Out Fuse In 5 Easy Steps](#)

Look for a fuse puller designed for safe and easy removal; many modern cars include one in the fuse box under the hood or dash. If ...

[Request Quote](#)



[Do You Need to Disconnect Battery to Change Fuse?](#)

Once the fuse box cover is removed, consult the diagram printed on the cover or in the manual to identify the specific fuse slot for the malfunctioning circuit. To remove the faulty ...

[Request Quote](#)



Contact Us

For catalog requests, pricing, or partnerships, please visit:

<https://www.energyinnovationday.pl>

Phone: +48 22 335 1273

Email: info@energyinnovationday.pl

Scan the QR code to contact us via WhatsApp.

