



Supercapacitor module prices in South America





Supercapacitor module prices in South America



supercapacitor

Most RTC chips have a VBATT input for backup power supply; besides a battery, you can use a supercap there, e.g. using the following scheme: simulate this circuit & ndash; ...

[Request Quote](#)

supercapacitor

Why the super-capacitor if you want to modify the electronics to ignore the absence of a battery to begin with?

[Request Quote](#)



supercapacitor

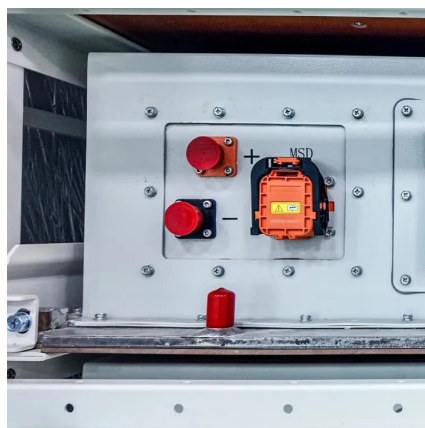
I am building a hobby project - a sort of supercapacitor powerbank, where I basically connected twelve 500F 2.7V supercapacitors in series. Despite these capacitors ...

[Request Quote](#)

supercapacitor

I have been watching videos on super capacitor jump starters for cars. I figured out about 90% of how they work, but there is one last thing I don't understand. The jump starters use a boost ...

[Request Quote](#)



supercapacitor

I'm trying to calculate the approximate leakage current for some capacitors I have. They are 5F 2.7v supercapacitors. I charged them up to 2.69v using a precision bench supply ...

[Request Quote](#)



Supercapacitor minimum voltage

The question doesn't contain a link to a specific datasheet for a Lithium Ion supercapacitor, but looking at the example for the CAP-XX LY13R8 RADIAL LEAD LITHIUM ...

[Request Quote](#)



power

Rather than using supercapacitors, it sounds to me like a good quality power management circuit can provide the motors with high current for short periods of time and then ...

[Request Quote](#)



supercapacitor



I am working on adding a super-capacitor to one of my 5V lines. Foolishly I tried adding the super-capacitor directly to the 5V line, but it over stresses my regulator to charge it ...

[Request Quote](#)



supercapacitor

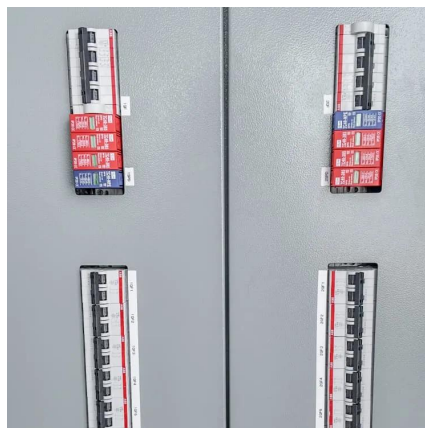
Choosing the Right Supercapacitor for your Application Wurth's ANP012 , How does a Supercapacitor age? Lifetime Model of Electric Double Layer Capacitors also gives ...

[Request Quote](#)

[RTC backup by super capacitor estimation issue](#)

This is based on a 0.33 F supercapacitor. If someone got an idea for why my RTC sink 50 μ A instead of 300nA It's most probably the DFLS130L-7 schottky diode. Take a look at ...

[Request Quote](#)





Contact Us

For catalog requests, pricing, or partnerships, please visit:

<https://www.energyinnovationday.pl>

Phone: +48 22 335 1273

Email: info@energyinnovationday.pl

Scan the QR code to contact us via WhatsApp.

