



# Substation battery cabinet installation





## Overview

---

In this guide, we break down the essential role of substation battery systems, best practices for installation, the importance of regular maintenance, and what to watch for to avoid preventable failures.

In this guide, we break down the essential role of substation battery systems, best practices for installation, the importance of regular maintenance, and what to watch for to avoid preventable failures.

This manual is designed for ease of use, giving the user easy and quick reference to information. This manual uses notice icons to draw attention to important information regarding the safe operation and installation of the battery cabinet. The notice icons used in this manual are explained below.

Substations are at the heart of power distribution networks—and behind every substation's reliability is a battery system quietly working to ensure that vital control and protection systems continue operating, even during an outage. These battery systems are more than just backups; they are.

If you encounter any installation or operational issues with your product, check the pertinent section of this manual to see if the issue can be resolved by following outlined procedures. Visit <https://> for additional assistance. This manual contains important.

This manual contains important instructions that you should follow during installation and maintenance of the UPS and batteries. Please read all instructions before operating the equipment and save this manual for future reference. Consignes de sécurité CONSIGNES DE SÉCURITÉ IMPORTANTES CONSERVER.

Our national footprint and local service groups support the installation, maintenance and end-of-life recycling processes for turn-key switchgear, control and power generation support. Power Solutions offers customized substation battery systems to meet the requirements of most facilities. We can.

**Design Margin:** A factor that adds capacity battery allowing for load additions to the DC system. Typically Design Margins are in 10% to 15% range (1.10 or 1.15)  
**Aging Factor (also called End of Life (EOL) capacity):** Used to insure 100% capacity



at the end of life. Normally the accepted IEEE-450 end.



## Substation battery cabinet installation



### [Powerware 9390 Integrated Battery Cabinet \(Models IBC-S ...](#)

A Chapter 2, "Battery Cabinet Installation Plan and Unpacking" - explains how to prepare the site for the installation of the battery cabinet. It discusses equipment environmental requirements, ...

[Request Quote](#)



## Substation cabinets

This article will give you an overall introduction to substation cabinets and how to use it properly, also the precautions tips on the installation and operation.

[Request Quote](#)

## Powering Up Safely: The Ins and Outs of Substation Battery ...

In this guide, we break down the essential role of substation battery systems, best practices for installation, the importance of regular maintenance, and what to watch for to ...

[Request Quote](#)



### [Liebert® EXS External Battery Cabinet Installer/User Guide](#)

This manual contains important instructions that should be followed during installation of your Vertiv™ Liebert® EXS Battery Cabinet and accessories. Read this manual thoroughly, paying ...

[Request Quote](#)



## U-ENM00044

This manual uses notice icons to draw attention to important information regarding the safe operation and installation of the battery cabinet. The notice icons used in this manual are ...

[Request Quote](#)



## [Building and Maintaining a Safe Substation Battery System](#)

Before designing or installing a battery system, the electrical designer or electrician should be very familiar with all of the hazards involved, as well as the minimum safety ...

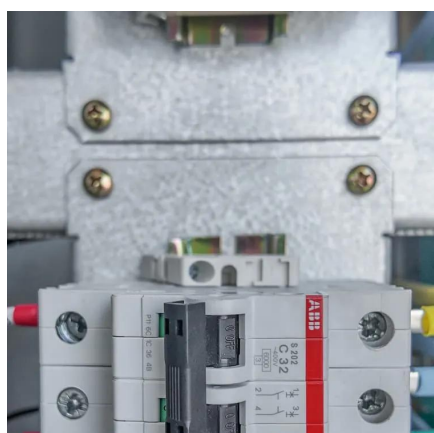
[Request Quote](#)



## [Tips for Designing Battery Cabinets/Enclosures , SBS Battery](#)

Tips on how to design a custom enclosure to house and protect your battery system.

[Request Quote](#)



## [Substation Power Systems and](#)



## Switchgear

We can help configure the entire substation battery systems including batteries of various chemistries, indoor racks, indoor or outdoor enclosures, battery chargers, spill containment ...

[Request Quote](#)



## **Energy Storage Battery Cabinet Installation: Your Roadmap to ...**

Let's face it - energy storage battery cabinets aren't exactly the Beyoncé of renewable energy systems. But just like backup dancers, they're critical to the show.

[Request Quote](#)

## **Powering Up Safely: The Ins and Outs of Substation Battery Installation**

In this guide, we break down the essential role of substation battery systems, best practices for installation, the importance of regular maintenance, and what to watch for to ...

[Request Quote](#)



## Substation Battery Systems Present & Future

The substation batteries for the DC system must be in operation 24/7 - 365 - NOT just for backup power, but also to provide the current needed for day-to-day switching operations

[Request Quote](#)



## Contact Us

---

For catalog requests, pricing, or partnerships, please visit:

<https://www.energyinnovationday.pl>

Phone: +48 22 335 1273

Email: [info@energyinnovationday.pl](mailto:info@energyinnovationday.pl)

Scan the QR code to contact us via WhatsApp.

