



# Storage temperature requirements for energy storage batteries





## Storage temperature requirements for energy storage batteries



### [Lithium Battery Storage Requirements](#)

This article analyzes lithium battery storage requirements in detail, focusing on user needs and application scenarios. Lithium batteries are highly sensitive to temperature. ...

[Request Quote](#)

### [The Definitive Guide to Lithium Battery ...](#)

The recommended storage temperature for lithium batteries is typically between  $-20^{\circ}\text{C}$  ( $-4^{\circ}\text{F}$ ) and  $25^{\circ}\text{C}$  ( $77^{\circ}\text{F}$ ) to maintain capacity and minimize ...

[Request Quote](#)



### [Container energy storage battery temperature requirements](#)

This document e-book aims to give an overview of the full process to specify, select, manufacture, test, ship and install a Battery Energy Storage System (BESS).

[Request Quote](#)



## What is the temperature range for the operation of an energy storage

Gel AGM Battery is a popular choice for energy storage applications due to its maintenance - free nature and deep - cycling capabilities. The recommended operating temperature range for Gel ...



[Request Quote](#)



## Storage and Temperature Control Requirements During LiFePO4 Battery

Controlling temperature during transportation is crucial for maintaining LiFePO4 battery safety and performance. Dealers and logistics teams should always monitor climate ...

[Request Quote](#)

## The best storage temperature and humidity for lithium batteries

This guide dives into the science-backed ideal temperature and humidity ranges for lithium battery storage, addressing common challenges and offering actionable solutions.

[Request Quote](#)



## [Energy storage battery cycle requirements](#)

It is necessary to take into account several requirements when selecting appropriate batteries for an energy storage system, such as specific energy, or capacity, which is related to runtime; ...

[Request Quote](#)

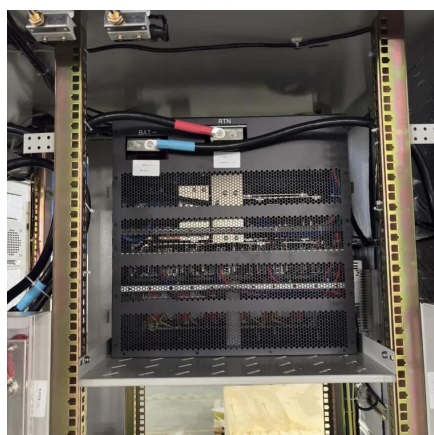
## Storage and Temperature Control



## Requirements During LiFePO4 ...

Controlling temperature during transportation is crucial for maintaining LiFePO4 battery safety and performance. Dealers and logistics teams should always monitor climate ...

[Request Quote](#)



## [Temperature Sensitivity in Energy Storage and Battery ...](#)

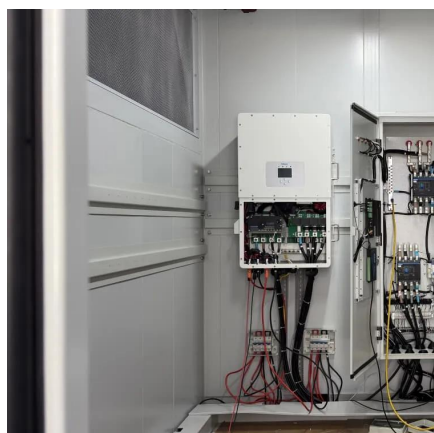
Batteries perform best when maintained at moderate temperatures, typically between 20°C and 25°C (68°F and 77°F). Therefore, ensure your location avoids direct ...

[Request Quote](#)

## What is the temperature range for the operation of an energy ...

Gel AGM Battery is a popular choice for energy storage applications due to its maintenance - free nature and deep - cycling capabilities. The recommended operating temperature range for Gel ...

[Request Quote](#)



## What temperature range is ideal for storing energy storage batteries

Storage at lower or higher temperatures can impact performance and lifespan. For optimal operation, the temperature should be between 15°C to 35°C (59°F to 95°F).

[Request Quote](#)

## [What's the Optimal Lithium Battery](#)



## [Storage ...](#)

Operating Temperature: Most Li-ion batteries function optimally between  $-20^{\circ}\text{C}$  to  $60^{\circ}\text{C}$  ( $-4^{\circ}\text{F}$  to  $140^{\circ}\text{F}$ ) during use. However, charging is safest ...

[Request Quote](#)



## [The Definitive Guide to Lithium Battery Temperature Range](#)

The recommended storage temperature for lithium batteries is typically between  $-20^{\circ}\text{C}$  ( $-4^{\circ}\text{F}$ ) and  $25^{\circ}\text{C}$  ( $77^{\circ}\text{F}$ ) to maintain capacity and minimize self-discharge. However, consult the ...

[Request Quote](#)

## [What temperature range is ideal for storing energy ...](#)

Storage at lower or higher temperatures can impact performance and lifespan. For optimal operation, the temperature should ...

[Request Quote](#)



## [What's the Optimal Lithium Battery Storage Temperature?](#)

Operating Temperature: Most Li-ion batteries function optimally between  $-20^{\circ}\text{C}$  to  $60^{\circ}\text{C}$  ( $-4^{\circ}\text{F}$  to  $140^{\circ}\text{F}$ ) during use. However, charging is safest between  $0^{\circ}\text{C}$  to  $45^{\circ}\text{C}$  ( $32^{\circ}\text{F}$  to  $113^{\circ}\text{F}$ ). Extreme ...

[Request Quote](#)

## [Temperature Sensitivity in Energy Storage](#)



[and ...](#)

Batteries perform best when maintained at moderate temperatures, typically between 20°C and 25°C (68°F and 77°F). ...

[Request Quote](#)





## Contact Us

---

For catalog requests, pricing, or partnerships, please visit:

<https://www.energyinnovationday.pl>

Phone: +48 22 335 1273

Email: [info@energyinnovationday.pl](mailto:info@energyinnovationday.pl)

Scan the QR code to contact us via WhatsApp.

