



# Square wave inverter charging battery





## Overview

---

Yes, an AC inverter can charge a cordless tool battery if it has enough wattage. A PWM (Pulse Width Modulation) inverter is best for charging because it offers high efficiency. Modified Sine Wave (MSW) inverters might overheat older chargers.

Yes, an AC inverter can charge a cordless tool battery if it has enough wattage. A PWM (Pulse Width Modulation) inverter is best for charging because it offers high efficiency. Modified Sine Wave (MSW) inverters might overheat older chargers.

Yes, an AC inverter can charge a cordless tool battery if it has enough wattage. A PWM (Pulse Width Modulation) inverter is best for charging because it offers high efficiency. Modified Sine Wave (MSW) inverters might overheat older chargers. Always verify the compatibility of the charger and the.

Summary: Square wave inverters are cost-effective but may impact battery longevity and efficiency during charging. This article explores their pros, cons, and best-use scenarios in renewable energy systems. Square wave inverters convert DC power from batteries into AC power using abrupt voltage.

Ever wondered if using a modified square wave inverter could potentially harm your cordless drill charger?

Picture this: you're in the middle of a project, relying on your trusty drill, when suddenly, you're faced with a dead battery. Could the type of inverter you're using be the culprit behind.

However, it is important to be aware of the potential risks that come with charging these drills using modified square wave inverters. Under certain conditions, these inverters can cause damage to the charger, which in turn can lead to malfunctioning or even permanent damage of the cordless drill.

Do you own a cordless drill and rely on a modified square wave inverter to charge its battery?

If so, you might be wondering if this could potentially damage your drill charger. Well, you have come to the right place! In this blog post, we will delve into the relationship between modified square.



1) Charger Circuit - to charge the battery system 2) Inverter - to convert DC supply from battery to AC signal 3) Switching mechanism - electronic mechanism to detect power failure and switch supply input from mains to inverter and on resumption of mains supply switch back to mains. In the previous.



## Square wave inverter charging battery



### [Designing square wave inverter for UPS \(Part\)](#)

In this tutorial, a square wave inverter is designed which will input power from a battery and output a square AC waveform. An Inverter ...

[Request Quote](#)

### Can an Inverter Charge a Cordless Tool Battery? Compatibility ...

No, an inverter cannot directly charge a cordless tool battery. Inverters convert direct current (DC) from a battery or another source into alternating current (AC) for use with ...

[Request Quote](#)



### Prevent Cordless Drill Charger Damage with Pure Sine Wave ...

The unstable current output of modified square wave inverters can disrupt the charging process of your cordless drill battery. Inadequate current regulation may hinder the ...

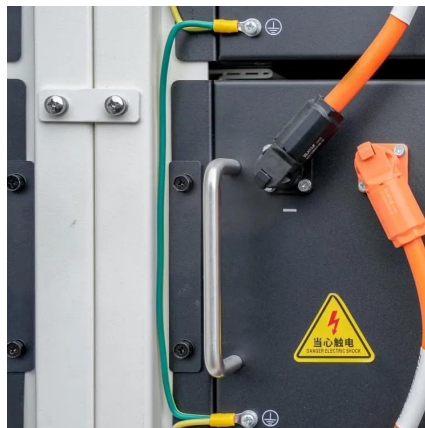
[Request Quote](#)

### [2000W Square Wave Power Power Inverter, 12V/24V to 110V ...](#)

This power inverter is not only the ultimate car travel charger for travel, vacation or remote workplaces, but also very useful for induction cookers, laptops and mobile phones.



[Request Quote](#)



### Luminous Eco Watt Neo 800 Square Wave Inverter with Red Charge ...

In Eco Mode, voltage range is extended thereby reducing battery usage. Advanced Micro processor design ensures reliable & quick switchover from mains to inverter & vice versa (less ...

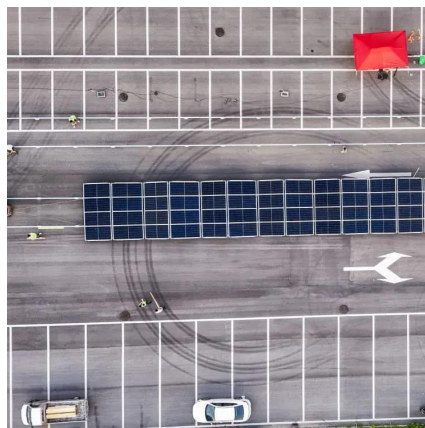
[Request Quote](#)



### Potential Risks: Can Using A Modified Square ...

Using a modified square wave inverter with a charger that requires pure sine wave AC power can have adverse effects on the ...

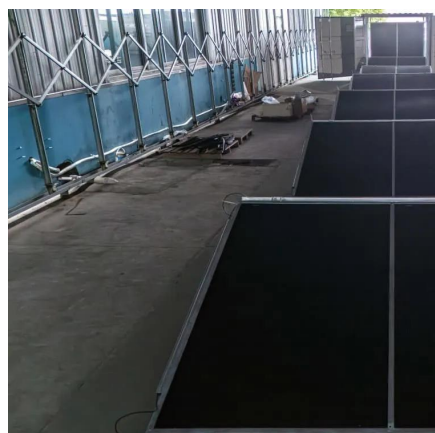
[Request Quote](#)



### Can Modified Square Wave Inverters Cordless Drill Charger ...

Do you own a cordless drill and rely on a modified square wave inverter to charge its battery? If so, you might be wondering if this could potentially damage your drill charger. ...

[Request Quote](#)



### Prevent Cordless Drill Charger



## Damage with Pure Sine Wave Inverters

The unstable current output of modified square wave inverters can disrupt the charging process of your cordless drill battery. Inadequate current regulation may hinder the ...

[Request Quote](#)



## Square Wave Inverters and Battery Charging Key Compatibility ...

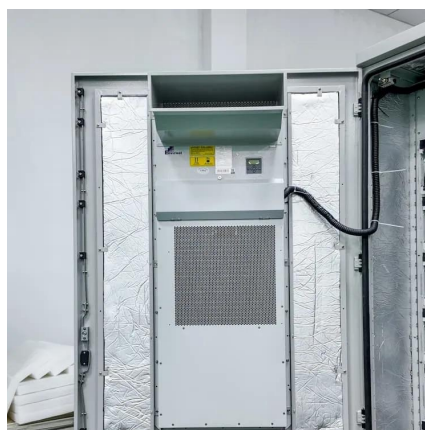
Summary: Square wave inverters are cost-effective but may impact battery longevity and efficiency during charging. This article explores their pros, cons, and best-use scenarios in ...

[Request Quote](#)

## Luminous Shakti Charge Pro 1450 12V Square Wave Inverter

The materials used to make the Luminous Shakti Charge + 1450 1100VA Square Wave Inverter are sourced from the most trusted and official inverters and home UPS suppliers, selected ...

[Request Quote](#)



## Potential Risks: Can Using A Modified Square Wave Inverter To Charge

Using a modified square wave inverter with a charger that requires pure sine wave AC power can have adverse effects on the charger and the battery. The abrupt changes in ...

[Request Quote](#)

## Square Design Series



A programmed algorithm controls the four-stage battery charger, from bulk charge to trickle, ensuring efficient battery management. The SD Series operates at 120VAC or 240VAC at ...

[Request Quote](#)



### [Luminous Eco Watt Neo 800 Square Wave](#)

...

In Eco Mode, voltage range is extended thereby reducing battery usage. Advanced Micro processor design ensures reliable & quick switchover ...

[Request Quote](#)



### [Designing square wave inverter for UPS \(Part](#)

In this tutorial, a square wave inverter is designed which will input power from a battery and output a square AC waveform. An Inverter should generate an AC signal at the ...

[Request Quote](#)



### [Luminous Shakti Charge Pro 1450 12V Square ...](#)

The materials used to make the Luminous Shakti Charge + 1450 1100VA Square Wave Inverter are sourced from the most trusted and official ...

[Request Quote](#)





## Contact Us

---

For catalog requests, pricing, or partnerships, please visit:

<https://www.energyinnovationday.pl>

Phone: +48 22 335 1273

Email: [info@energyinnovationday.pl](mailto:info@energyinnovationday.pl)

Scan the QR code to contact us via WhatsApp.

