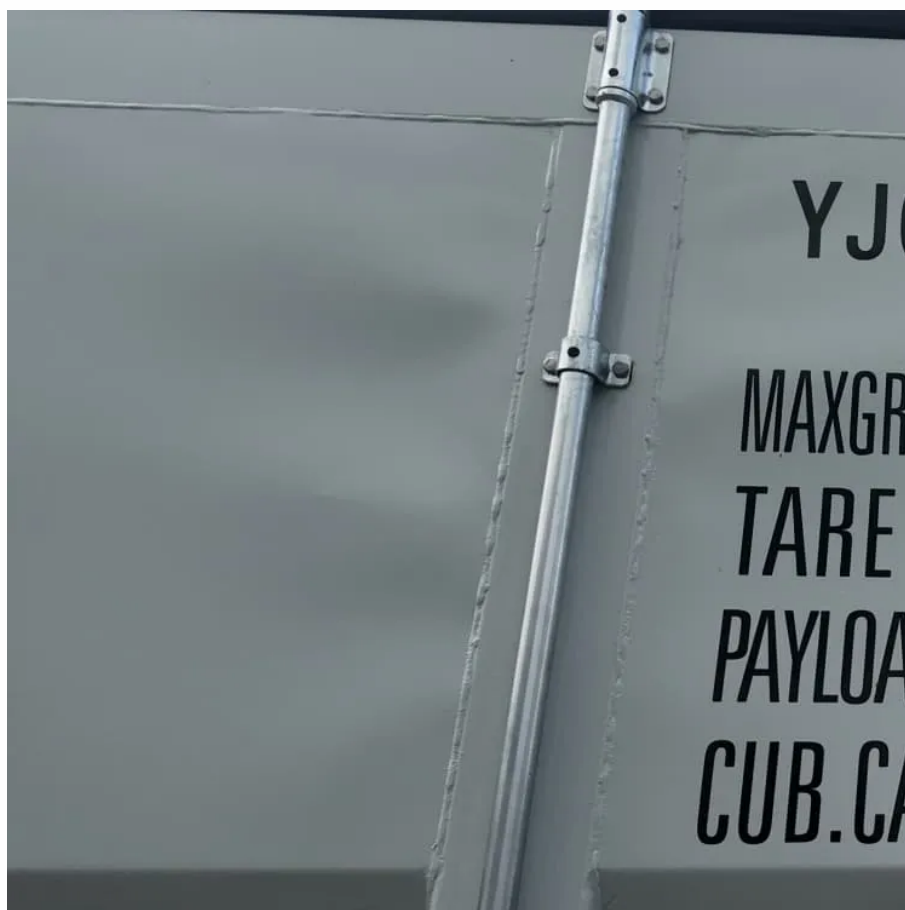




Southeast Asia Communications Green Base Station Lightning Protection Grounding





Southeast Asia Communications Green Base Station Lightning Protection



Lightning Protection and Grounding

This section describes the lightning protection and grounding requirements. Ensure that the equipment room meets the requirements because lightning is one of the major factors that ...

[Request Quote](#)

Grounding, Lightning Protection and Surge Protection

The traditional approach to lightning protection on towers is to have a lightning rod on the top of the tower and a dedicated down conductor comprised of bare cable or tape that is installed on ...

[Request Quote](#)



Communication green base station carries out lightning ...

How does a lightning protection system work? Reduces the risk of a direct strike by lowering the electric field to below lightning-collection levels within the protected area. Safely collects any ...

[Request Quote](#)

ITU-T Rec. K.112 (07/2019) Lightning protection, earthing ...

The purpose of this Recommendation is to give detailed guidance on protection procedures, so that an engineer who is not a lightning protection expert can accomplish the design of the ...



[Request Quote](#)



[Communication green base station equipment installation ...](#)

The protection of GSM and base station towers from lightning and overvoltage is provided by integrating external lightning systems, internal lightning systems, earthing, equipotential ...

[Request Quote](#)



[Solutions for Lightning Protection, Bonding, and Grounding](#)

Since 1960, Harger has provided the best structural lightning protection, bonding, and grounding for commercial applications. Harger has the products and expertise necessary to address your ...

[Request Quote](#)



[Telecommunications Grounding and Bonding , nVent](#)

These solutions are part of the wider nVent ERICO electrical protection offering which also include direct strike lightning protection and surge protection devices.

[Request Quote](#)



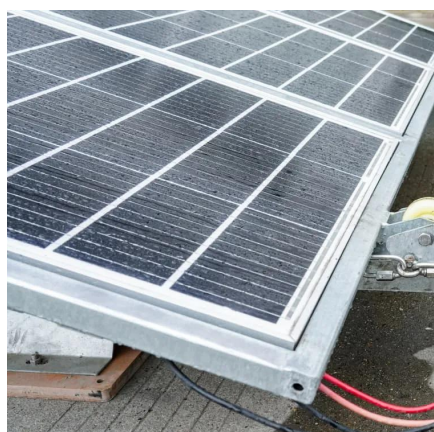
Communication Network GSM-Base



Stations and Lightning Effect

The protection of GSM and base station towers from lightning and overvoltage is provided by integrating external lightning systems, internal lightning systems, earthing, equipotential ...

[Request Quote](#)



[How Are Base Stations Protected Against Lightning?](#)

In base station lightning protection design, the grounding grid and ground busbars are key components. With proper design, they can effectively reduce the impact of lightning on ...

[Request Quote](#)

[Lightning and Surge Protection for Communication Station](#)

Install lightning rods, grounding, surge protectors, shielding, and follow standards for effective communication station protection.

[Request Quote](#)





Contact Us

For catalog requests, pricing, or partnerships, please visit:

<https://www.energyinnovationday.pl>

Phone: +48 22 335 1273

Email: info@energyinnovationday.pl

Scan the QR code to contact us via WhatsApp.

