



Some solar container lithium battery packs have negative numbers





Overview

Some lithium battery packs include unique connectors or terminal shapes to prevent incorrect connections. For example, the positive terminal may have a rounded or protruding shape, while the negative terminal might appear flat or recessed.

Some lithium battery packs include unique connectors or terminal shapes to prevent incorrect connections. For example, the positive terminal may have a rounded or protruding shape, while the negative terminal might appear flat or recessed.

You can find battery terminals by checking their colors. Red means positive, and black means negative. If labels are hard to see, use a multimeter. A positive number means the red probe is on the positive terminal. Be safe when working with batteries. Wear safety gear and avoid short circuits to.

But to use lithium batteries safely, you need to know which side is positive and which is negative. Getting this wrong can damage your device or even cause fires and explosions. So how do you determine which side of a lithium battery is negative?

There are a few easy ways to identify the positive.

BESS refers to a mobile power supply device with lithium battery packs, lithium-ion battery packs, or lithium-metal battery packs installed and secured within specially designed container transport components. According to the International Maritime Dangerous Goods Code (IMDG Code), BESS is.

A lithium-ion battery contains one or more lithium cells that are electrically connected. Like all batteries, lithium battery cells contain a positive electrode, a negative electrode, a separator, and an electrolyte solution. Atoms or molecules with a net electric charge (i.e., ions) are.

All lithium batteries can pose a fire risk. Damaged, defective, or recalled (DDR) lithium batteries, including those misused and abused, pose an even greater risk than non-DDR lithium batteries in transportation. They are more likely to catch fire in a process known as “thermal runaway.”.



Looking at the label of any lithium based battery you will see a set of numbers that tell you what is inside. The first number you will see is the Voltage expressed as a V. Typical voltages are 12v, 24v, 36v, 48v and 52v. This number represents the potential that is stored between the positive. What is a Dangerous Goods label for lithium batteries?

Except for containerized lithium-ion battery energy storage systems and vehicles powered by lithium batteries (pure electric or hybrid), packages containing lithium batteries or battery packs must be affixed with the 9A dangerous goods label as shown in Figure 4 or the lithium battery mark as shown in Figure 5, as required.

What does a positive number on a lithium ion battery mean?

A positive number means the red probe is on the positive terminal. Be safe when working with batteries. Wear safety gear and avoid short circuits to stay safe. Color coding and labels are the most straightforward ways to identify the positive and negative terminals on a lithium-ion battery.

How do you identify a lithium battery pack?

Lithium battery packs often combine multiple cells to achieve higher voltage or capacity. Identifying the positive and negative terminals on these packs can be more complex than on individual cells. Manufacturers typically label the main terminals on the pack with “+” and “-” symbols.

How do I identify a lithium battery hazardous goods container?

Except for vehicles driven by lithium batteries (pure electric or hybrid), containers containing lithium battery hazardous goods must have Class 9 hazardous goods labels and UN number markings affixed to each side and each end of the container (for lithium-ion battery energy storage systems, on two opposite sides).



Some solar container lithium battery packs have negative numbers



[Which Side is Negative on a Lithium Battery?](#)

There are a few easy ways to identify the positive and negative terminals. In this comprehensive guide, as a professional lithium battery packs manufacturer, I'll walk you ...

[Request Quote](#)

[Lithium Battery Packs by the Numbers](#)

This would mean that the battery is rated for 10a continuous and 20a max or peak discharge. Going over these limits will shorten the life of your battery from excessive heat generation.

[Request Quote](#)



Lithium-ion Battery Safety

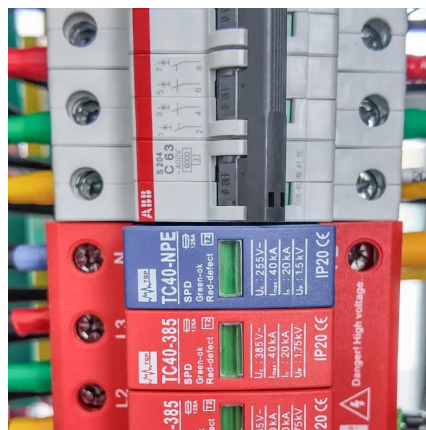
Like all batteries, lithium battery cells contain a positive electrode, a negative electrode, a separator, and an electrolyte solution. Atoms or molecules with a net electric charge (i.e., ions) ...

[Request Quote](#)

[SCU Gets UN3536 Certification for Lithium Battery ...](#)

Before transportation, lithium battery packs of the UN3536 category must pass the UN38.3 test and undergo a series of safety tests, ...

[Request Quote](#)



[Shipping Requirements for Lithium Battery ...](#)

Learn about the shipping requirements for lithium battery dangerous goods via sea freight, including classifications, general requirements, container ...

[Request Quote](#)



Risks associated with transporting containerised Battery Energy ...

In recent years, demand for the maritime transportation of containerised Battery Energy Storage Systems (BESS) has grown significantly. However, due to the high safety ...

[Request Quote](#)



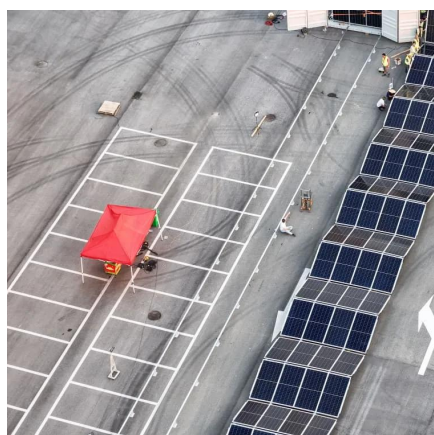
How to Tell the Positive from the



Negative on a Lithium Battery

Some lithium battery packs include unique connectors or terminal shapes to prevent incorrect connections. For example, the positive terminal may have a rounded or ...

[Request Quote](#)



[How to Tell the Positive from the Negative on a ...](#)

Some lithium battery packs include unique connectors or terminal shapes to prevent incorrect connections. For example, the ...

[Request Quote](#)

Grants

The New York City Fire Department reports responding to over 200 lithium battery fire in 2022 and those fires were the cause of six deaths in the city. Nearly every one of these batteries were ...

[Request Quote](#)



[Managing Lithium Battery Risks: From Supply Chain to Storage](#)

NSW's first recorded deaths from a lithium-ion battery fire. The incident involved a trail bike battery that became mechanically compromised, leading to a thermal runaway. The fire spread ...

[Request Quote](#)

What are the hazards of inconsistent



solar lithium batteries?

This article will introduce inconsistent cells when used in series and together, what harm will be brought to the lithium-ion battery PACK and how we should deal with the problem of ...

[Request Quote](#)



[Risks associated with transporting containerised ...](#)

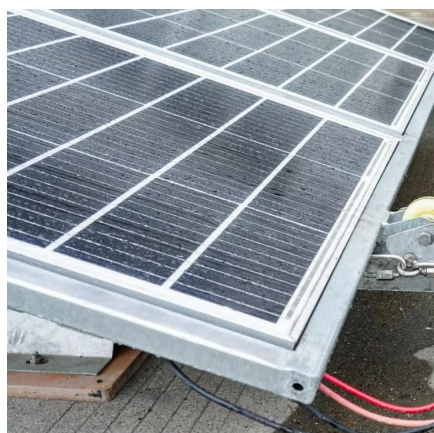
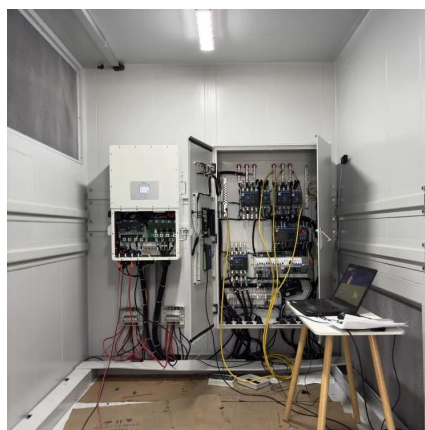
In recent years, demand for the maritime transportation of containerised Battery Energy Storage Systems (BESS) has grown ...

[Request Quote](#)

[Shipping Requirements for Lithium Battery Dangerous Goods](#)

Learn about the shipping requirements for lithium battery dangerous goods via sea freight, including classifications, general requirements, container packing standards, labeling, and port ...

[Request Quote](#)



SCU Gets UN3536 Certification for Lithium Battery Energy Storage Container

Before transportation, lithium battery packs of the UN3536 category must pass the UN38.3 test and undergo a series of safety tests, such as short circuit tests, impact tests, ...

[Request Quote](#)



Contact Us

For catalog requests, pricing, or partnerships, please visit:

<https://www.energyinnovationday.pl>

Phone: +48 22 335 1273

Email: info@energyinnovationday.pl

Scan the QR code to contact us via WhatsApp.

