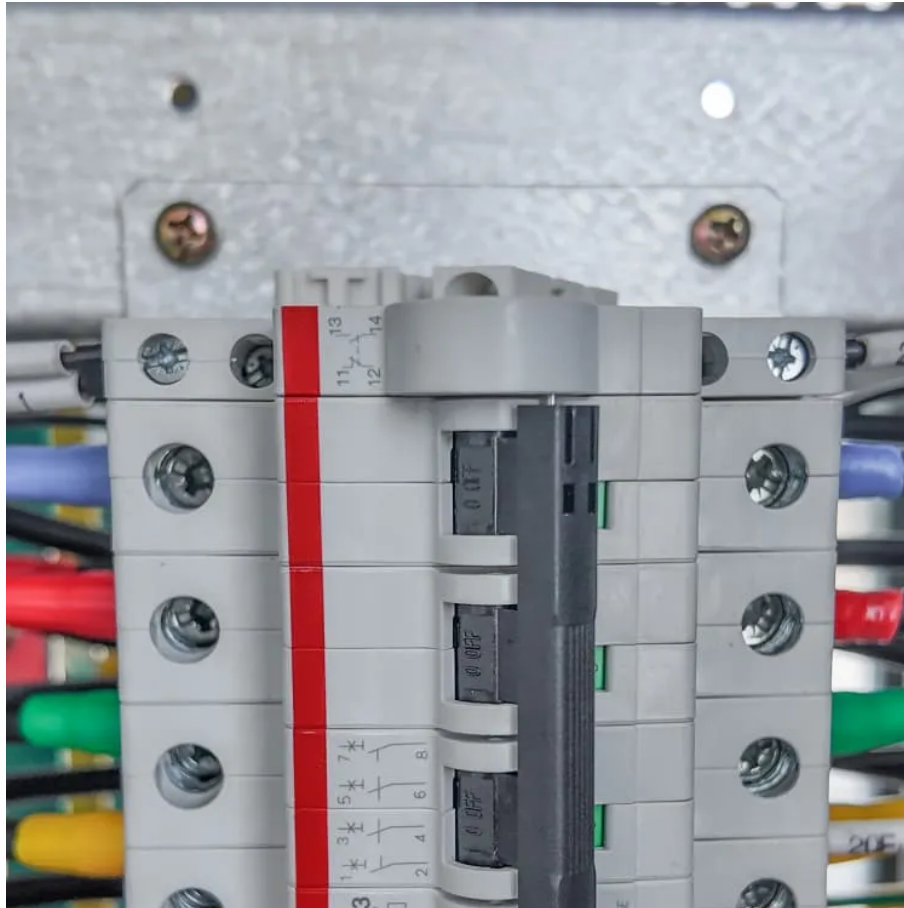




# Solar silicon panel size standards





## Overview

---

Individual PV solar cells are thin slices of silicon that typically measure 6 inches long by 6 inches wide. Multiple solar cells are assembled together to form a rectangular shaped panel. The standard solar panel size typically contains either 60 or 72 cells.

Individual PV solar cells are thin slices of silicon that typically measure 6 inches long by 6 inches wide. Multiple solar cells are assembled together to form a rectangular shaped panel. The standard solar panel size typically contains either 60 or 72 cells.

**Standard Residential Panels Optimize Space and Handling:** The industry-standard 60-cell panel dimensions (65" × 39" × 1.5") aren't arbitrary - they represent the optimal balance between power output, installation ease, and roof space utilization. At 40-46 pounds, they can be safely handled by.

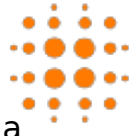
A standard solar panel has several key layers and components: These are the heart of the panel — small semiconductor wafers (usually silicon-based) that absorb sunlight and generate electricity through the photovoltaic effect. Panels typically contain 60, 72, or 96 individual solar cells. Source:.

Solar panels come in a range of sizes, and their dimensions can impact everything from the energy output to the amount of space required for installation. Let's explore the standard sizes, factors that influence panel dimensions, and what they mean for your solar setup. Most solar panels used in.

Solar panel dimensions and sizes refer to the physical measurements of a solar panel, including its length, width, and thickness. These measurements show how much space a panel takes on a roof or ground surface. Each panel size connects directly to how much power it can produce. Small panels.

Understanding solar panel dimensions is crucial for planning your solar system installation, maximizing efficiency, and ensuring compatibility with your available space. In this blog, we'll break down the standard sizes of solar panels, explain how panel dimensions impact performance, and help you.

Individual PV solar cells are thin slices of silicon that typically measure 6 inches



long by 6 inches wide. Multiple solar cells are assembled together to form a rectangular shaped panel. The standard solar panel size typically contains either 60 or 72 cells. You can also find panels with as few as.



## Solar silicon panel size standards

---



### [Standard Solar Panel Sizes And Wattages \(100W-500W ...](#)

To bridge that gap of very useful knowledge needed, we have compared and averaged the sizes of 100-watt to 500-watt solar panels available on the market. The goal here is to get to the ...

[Request Quote](#)

### [How To Read A Solar Panel Spec Sheet: A Complete Guide](#)

For this blog, we will look at traditional rectangular-shaped crystalline solar panels. These are the squared or rounded silicon photovoltaic cells encased in glass with a metal ...

[Request Quote](#)



### [Solar Panels Size & Weight \(Including Commercial Dimensions\)](#)

Individual PV solar cells are thin slices of silicon that typically measure 6 inches long by 6 inches wide. Multiple ...

[Request Quote](#)



### [Standard Solar Panel Sizes And Wattages \(100W ...](#)

To bridge that gap of very useful knowledge needed, we have compared and averaged the sizes of 100-watt to 500-watt solar panels available on the ...



[Request Quote](#)



### [Detailed Guide to Solar Panel Size & Dimensions](#)

The standard solar panel size is approximately 66 x 39 inches and typically contains 60 cells. For commercial use, panels are usually 77 ...

[Request Quote](#)



### [What Are the Standard Sizes of Solar Panels?](#)

Solar panels come in a range of sizes, and their dimensions can impact everything from the energy output to the amount of space required for installation. Let's explore the ...

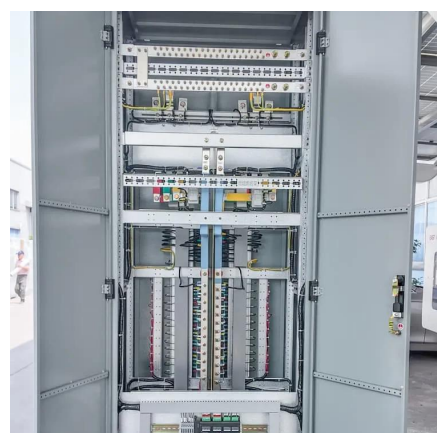
[Request Quote](#)



### [How To Read A Solar Panel Spec Sheet: A ...](#)

For this blog, we will look at traditional rectangular-shaped crystalline solar panels. These are the squared or rounded silicon ...

[Request Quote](#)



### [Understanding Solar Panel Dimensions In](#)



## [2025: A ...](#)

Explore the most common solar panel dimensions in 2025, including residential and commercial sizes. Learn how solar panel size ...

[Request Quote](#)



## [The Ultimate Guide to Solar Panel Dimensions and Sizes](#)

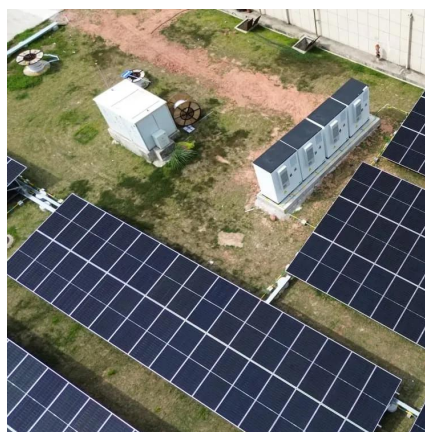
In this guide, we covered everything about solar panel dimensions and sizes, including different types of panels, their wattage, typical measurements, and how to choose ...

[Request Quote](#)

## [Solar Panels Size & Weight \(Including Commercial Dimensions\)](#)

Individual PV solar cells are thin slices of silicon that typically measure 6 inches long by 6 inches wide. Multiple solar cells are assembled together to form a rectangular ...

[Request Quote](#)



## [Detailed Guide to Solar Panel Size & Dimensions](#)

The standard solar panel size is approximately 66 x 39 inches and typically contains 60 cells. For commercial use, panels are usually 77 x 39 inches with 72 cells, offering ...

[Request Quote](#)

## Understanding Solar Panel



## Dimensions In 2025: A Complete Size

...

Explore the most common solar panel dimensions in 2025, including residential and commercial sizes. Learn how solar panel size dimensions affect power, installation, and ...

[Request Quote](#)



## [The Ultimate Guide to Solar Panel Dimensions and ...](#)

In this guide, we covered everything about solar panel dimensions and sizes, including different types of panels, their wattage, ...

[Request Quote](#)



## [standard solar photovoltaic panel sizes explained](#)

What is the most common residential solar photovoltaic panel size I will encounter? The standard residential solar photovoltaic panel size you'll see most often is based on a 60 ...

[Request Quote](#)



## **The Ultimate Guide to Solar Panel Size, Weight & Wattage (2025)**

Standard residential solar panels are typically around 5.8 feet long by 3.5 feet wide and weigh between 40 to 50 pounds. However, the exact dimensions depend heavily on the ...

[Request Quote](#)



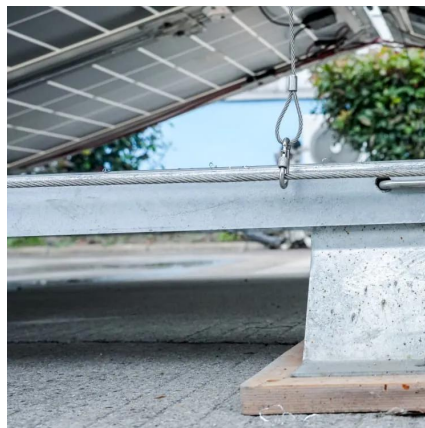
## [The Ultimate Guide to Solar Panel Size.](#)



## [Weight](#)

Standard residential solar panels are typically around 5.8 feet long by 3.5 feet wide and weigh between 40 to 50 pounds. However, the ...

[Request Quote](#)



## [Solar Panel Size & Dimensions Guide 2025](#) [. Complete Specs](#)

In this comprehensive guide, you'll learn everything you need to know about solar panel sizing, from standard dimensions to weight considerations, helping you determine the ...

[Request Quote](#)



## Contact Us

---

For catalog requests, pricing, or partnerships, please visit:

<https://www.energyinnovationday.pl>

Phone: +48 22 335 1273

Email: [info@energyinnovationday.pl](mailto:info@energyinnovationday.pl)

Scan the QR code to contact us via WhatsApp.

